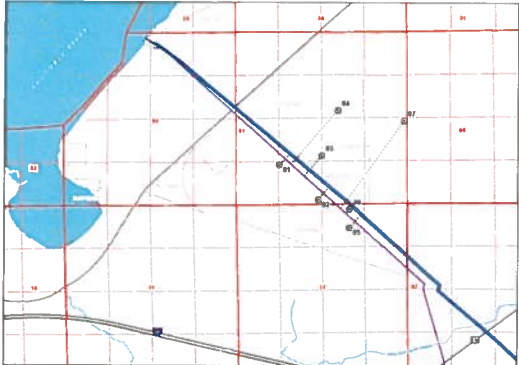
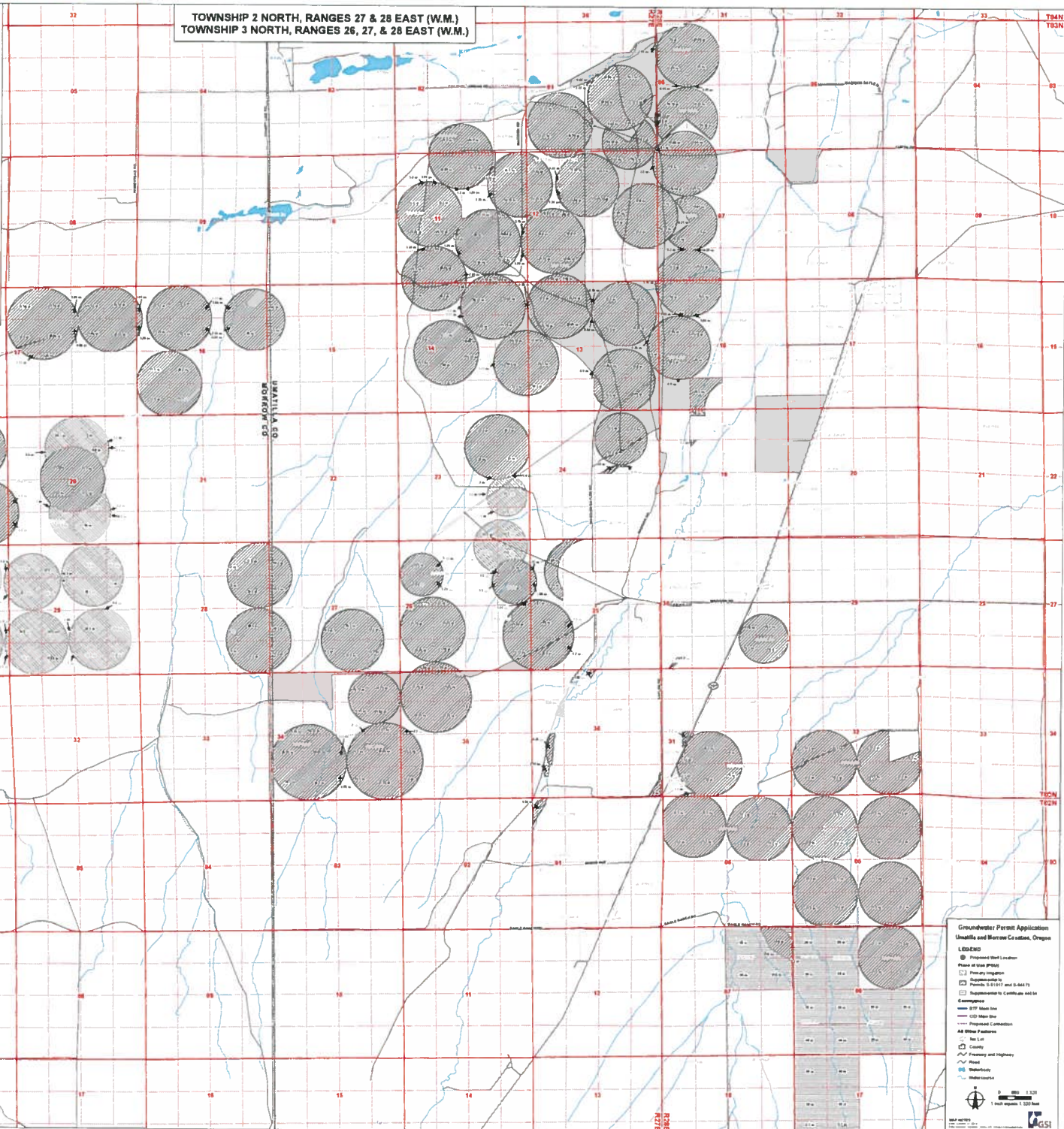


PROPOSED POINTS OF APPROPRIATION

TOWNSHIP 2 NORTH, RANGES 27 & 28 EAST (W.M.)
TOWNSHIP 3 NORTH, RANGES 26, 27, & 28 EAST (W.M.)



PERFORM HILLS LOCATION OVERLAYS
Map of the area shown in this map is based on the following information:
1. Township 2 North, Range 27 East, 3rd 6" x 6" G.S. 1891
2. Township 2 North, Range 28 East, 3rd 6" x 6" G.S. 1892
3. Township 3 North, Range 26 East, 3rd 6" x 6" G.S. 1893
4. Township 3 North, Range 27 East, 3rd 6" x 6" G.S. 1894
5. Township 3 North, Range 28 East, 3rd 6" x 6" G.S. 1895
6. Township 2 North, Range 27 East, 3rd 6" x 6" G.S. 1891
7. Township 2 North, Range 28 East, 3rd 6" x 6" G.S. 1892
8. Township 3 North, Range 26 East, 3rd 6" x 6" G.S. 1893
9. Township 3 North, Range 27 East, 3rd 6" x 6" G.S. 1894
10. Township 3 North, Range 28 East, 3rd 6" x 6" G.S. 1895



RECEIVED

OCT 24 2014

WATER RESOURCES DEPT
SALEM, OREGON

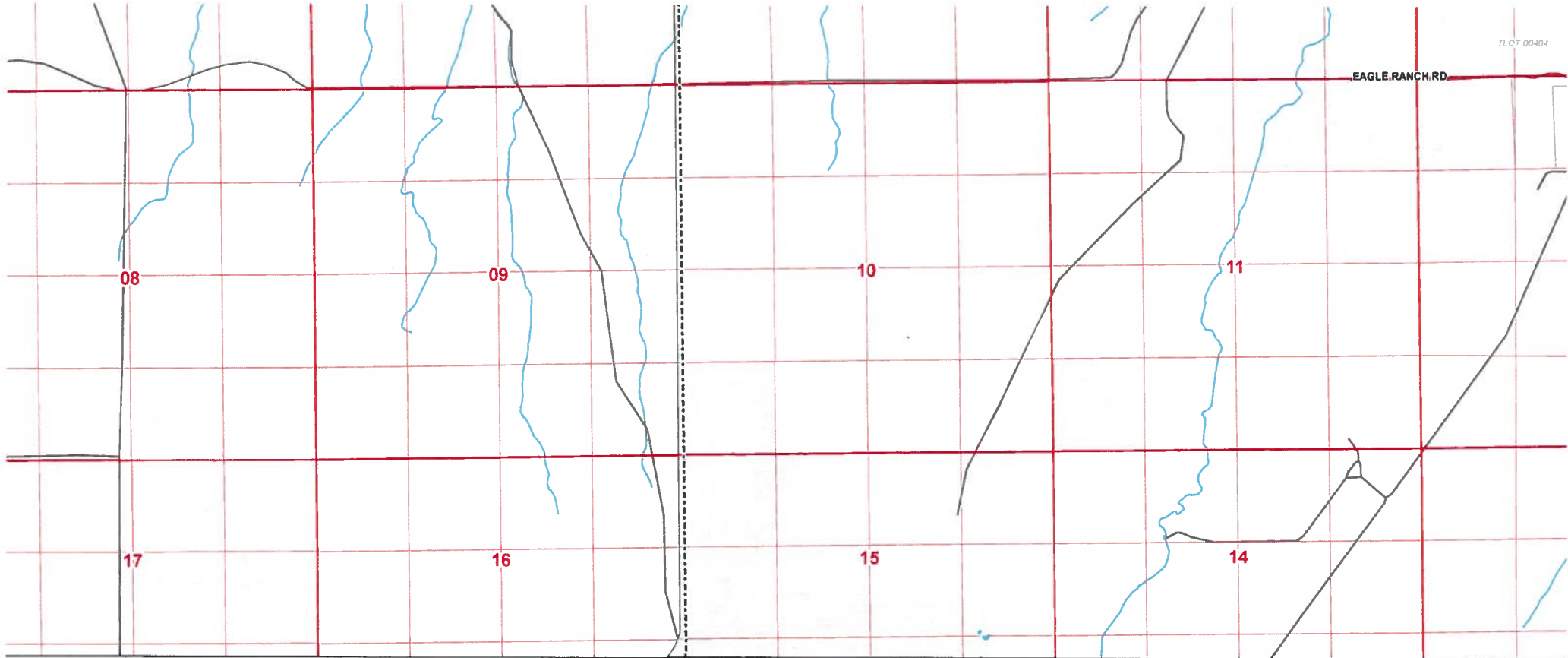
Groundwater Permit Application
Umatilla and Wheeler Counties, Oregon

LEGEND

- Proposed Well Location
- Point of Use (POU)
- Priority Application
- Supplemental to Permit 04-1011 and 0-14471
- Supplemental to Certificate of Sale
- Emergency
- OTW Main Line
- CD Main Line
- Proposed Collection
- All Other Features
- No Lot
- County
- Freeway and Highway
- Road
- Stream
- Watercourse

Scale: 1" = 1,200'
North Arrow

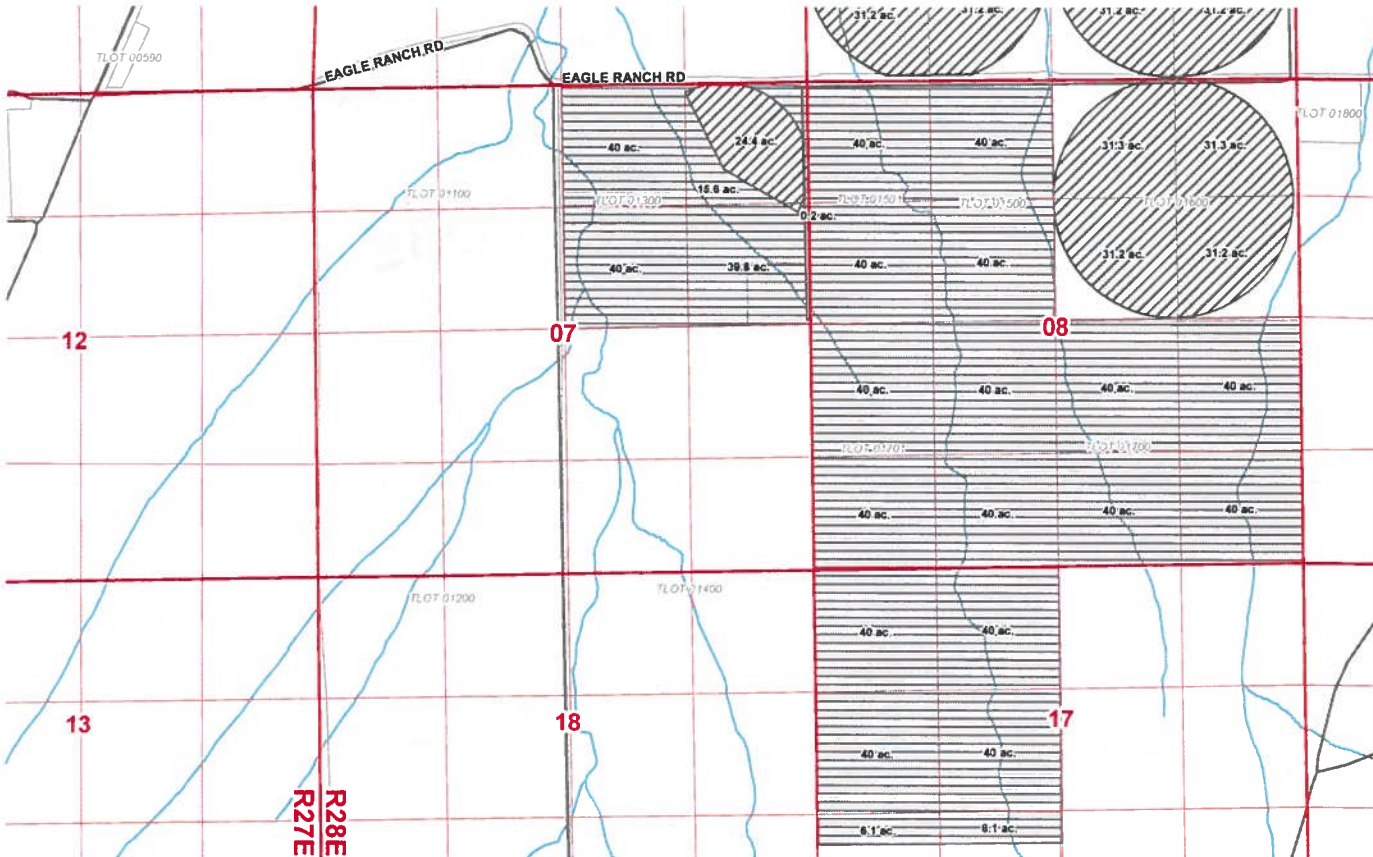
EAGLE RANCH RD



RECEIVED

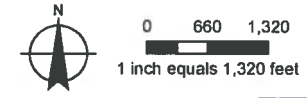
OCT 24 2014

WATER RESOURCES DEPT
SALEM, OREGON



Groundwater Permit Application
Umatilla and Morrow Counties, Oregon

- LEGEND**
- ⊙ Proposed Well Location
 - Place of Use (POU)**
 - ▨ Primary Irrigation
 - ▩ Supplemental to Permits S-51017 and S-54675
 - ▭ Supplemental to Certificate 44654
 - Conveyance**
 - BTF Main line
 - CID Main line
 - - - Proposed Connection
 - All Other Features**
 - ⊞ Tax Lot
 - ⊞ County
 - ⚡ Freeway and Highway
 - ⚡ Road
 - 🌊 Waterbody
 - ~ Watercourse

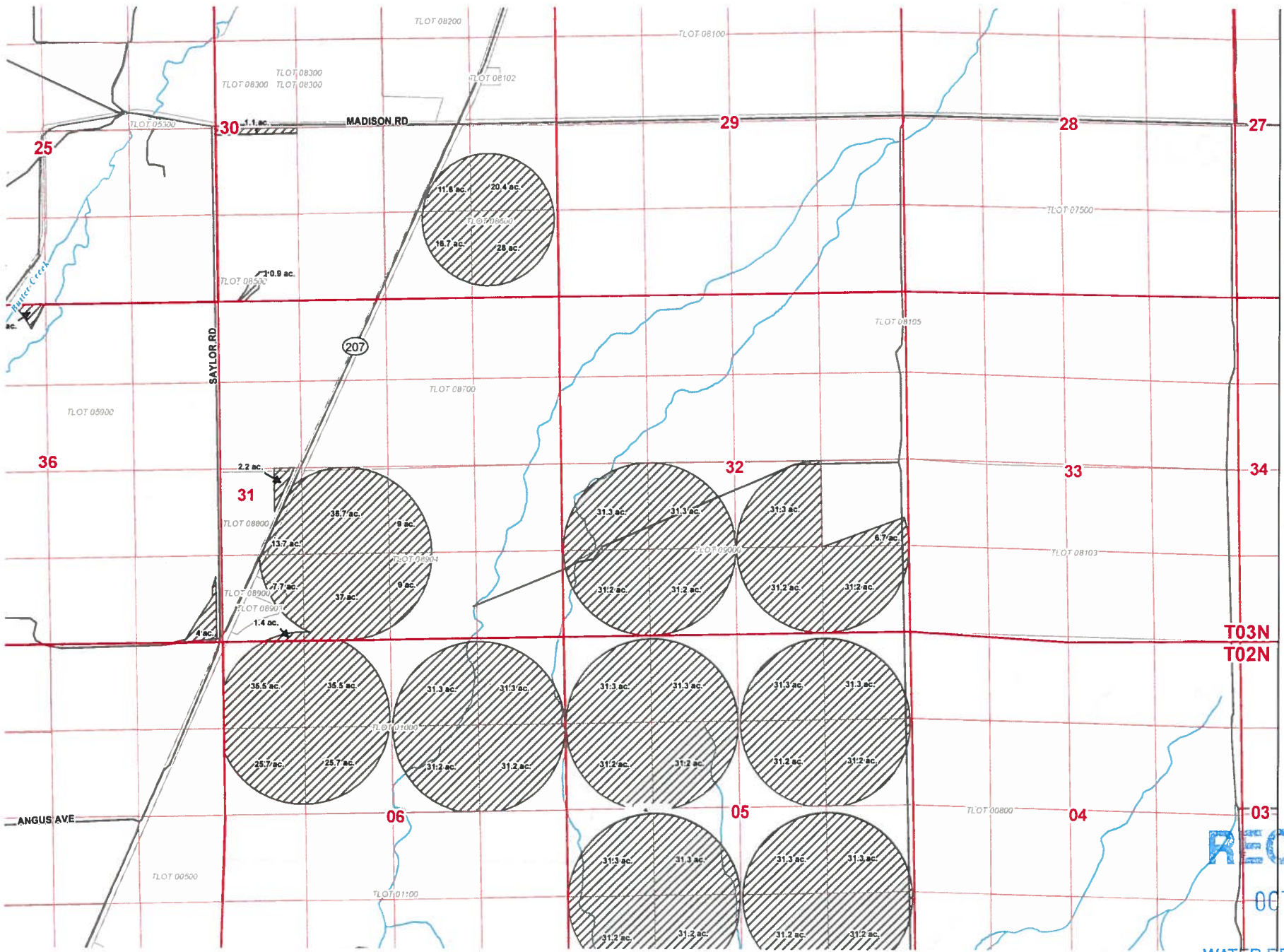


MAP NOTES:
 Date: October 17, 2014
 Data Sources: Umatilla County GIS, Oregon Geospatial Data Clearinghouse, ORMAP, ESRI


RECEIVED

OCT 24 2014

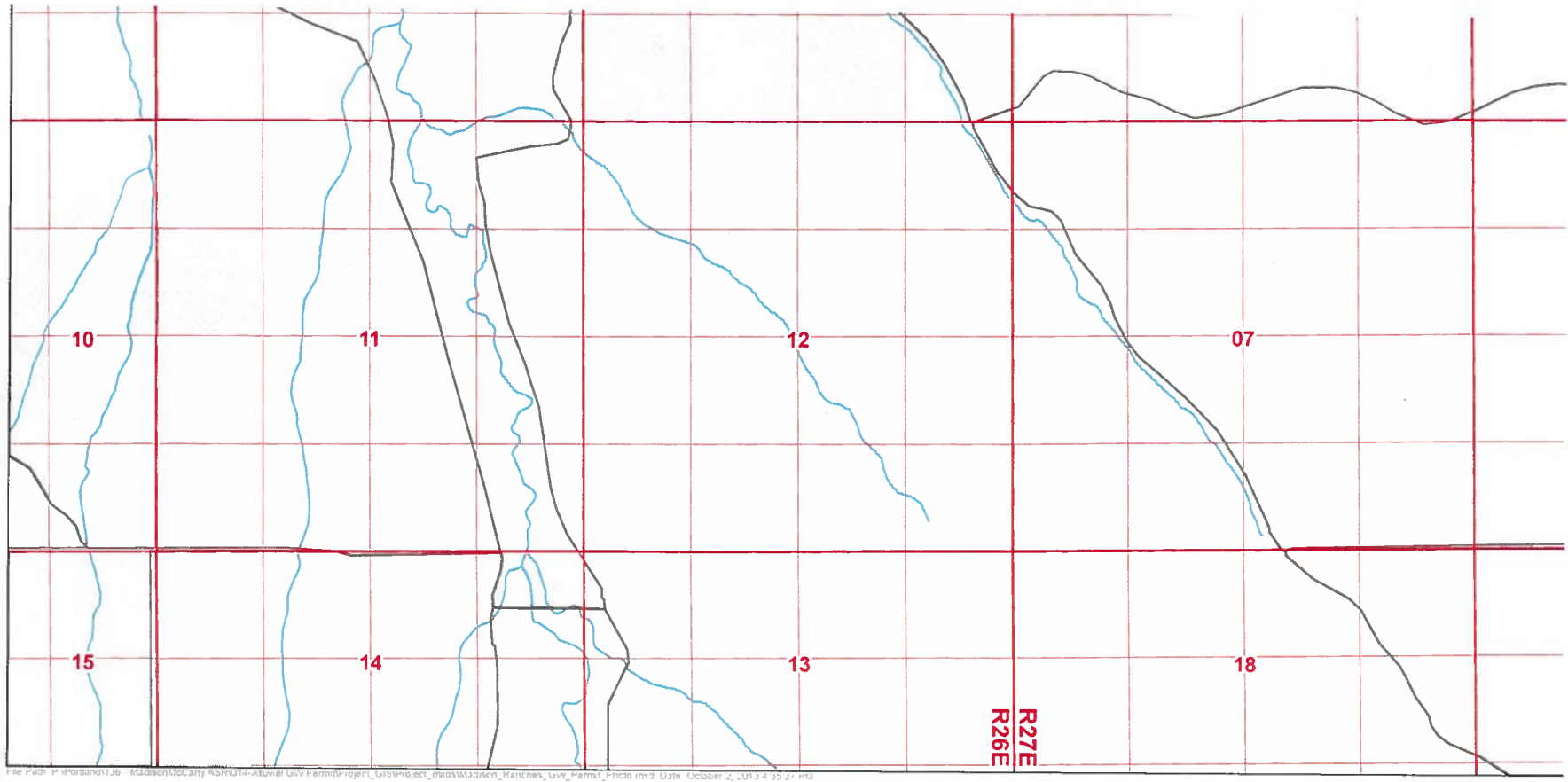
WATER RESOURCES DEPT
 SALEM, OREGON



RECEIVED

OCT 24 2014

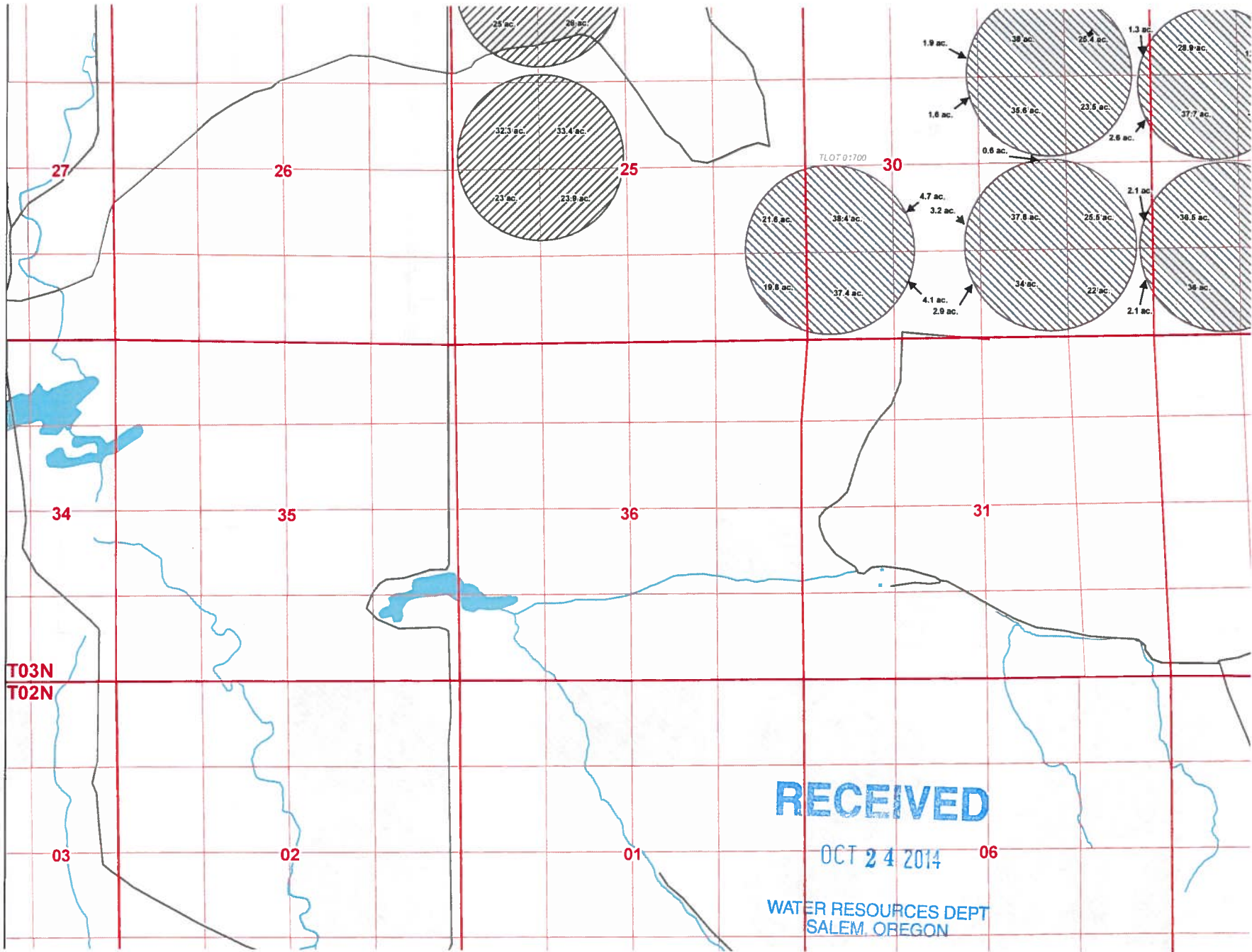
WATER RESOURCES DEPT
SALEM, OREGON

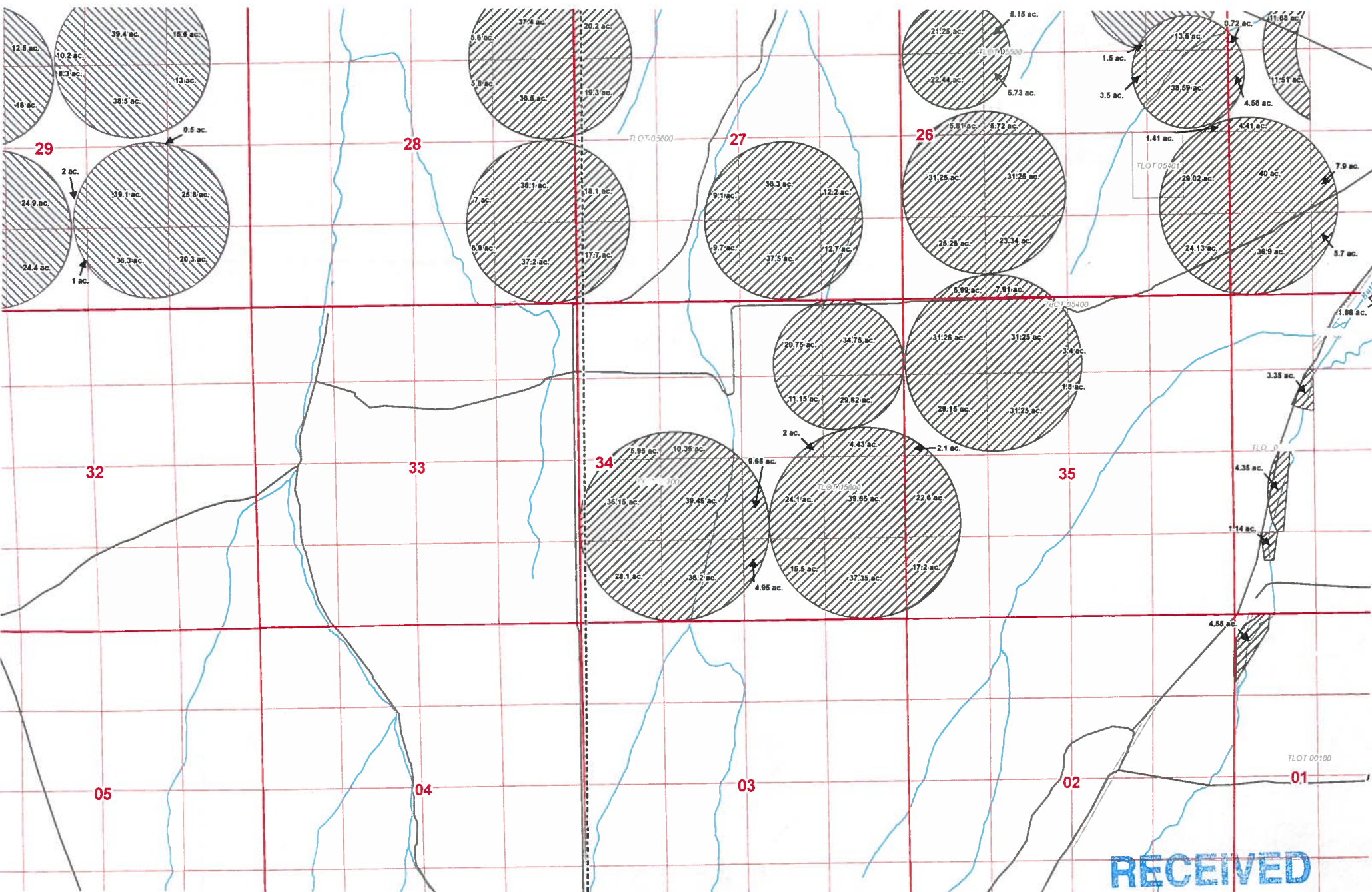


RECEIVED

OCT 24 2014

WATER RESOURCES DEPT
SALEM, OREGON





RECEIVED

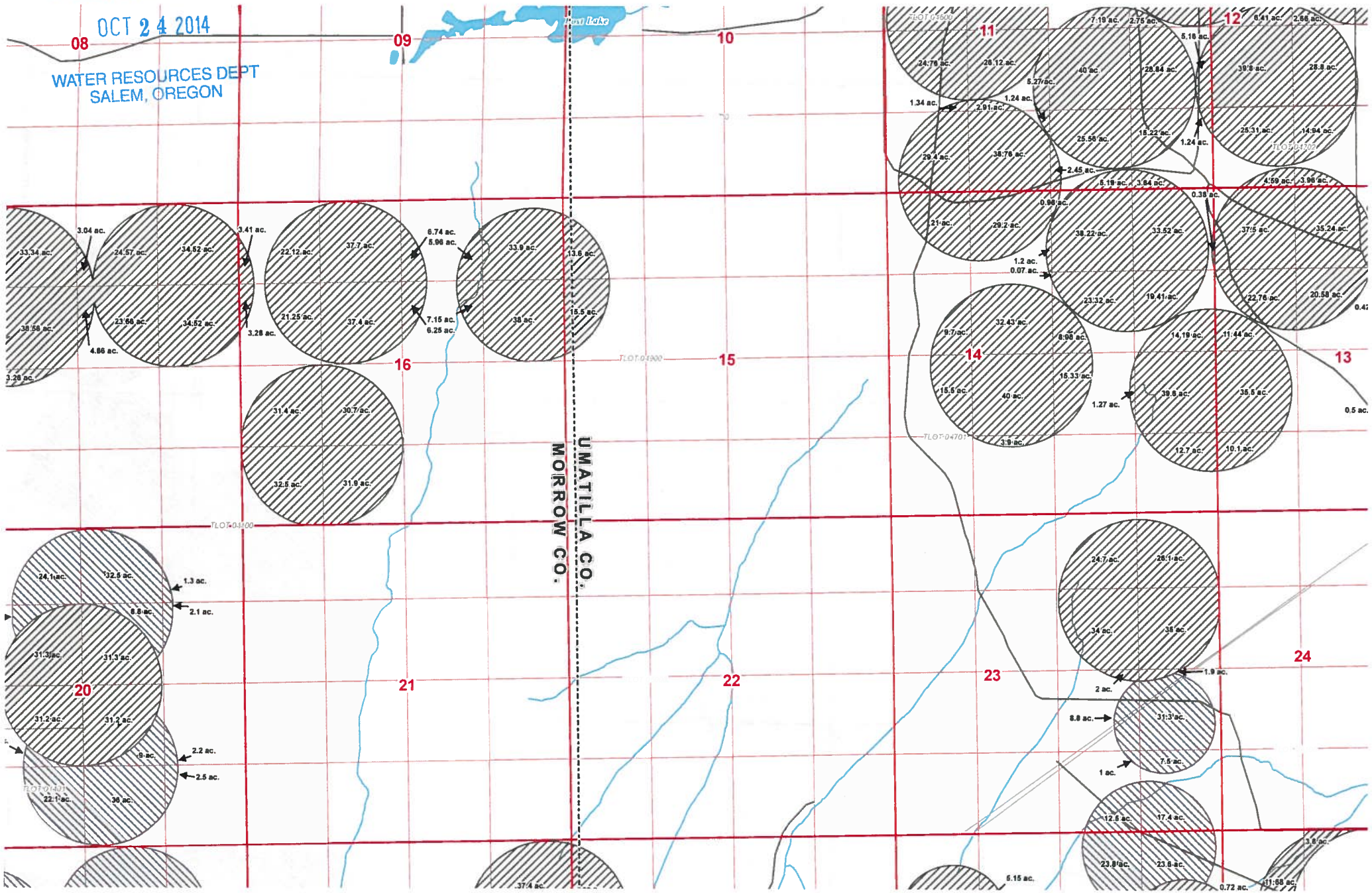
OCT 24 2014

WATER RESOURCES DEPT

RECEIVED

OCT 24 2014

WATER RESOURCES DEPT
SALEM, OREGON



UMATILLA CO.
MORROW CO.

08

09

10

11

12

16

15

13

20

21

22

23

24

33.34 ac.
30.58 ac.
3.28 ac.
3.04 ac.
24.57 ac.
4.86 ac.
34.62 ac.
34.62 ac.
3.41 ac.
22.12 ac.
21.25 ac.
37.4 ac.
37.4 ac.
7.15 ac.
6.25 ac.
6.74 ac.
5.96 ac.
33.9 ac.
38 ac.
13.8 ac.
15.5 ac.

31.4 ac.
32.5 ac.
30.7 ac.
31.9 ac.

24.1 ac.
31.3 ac.
31.2 ac.
22.1 ac.
32.5 ac.
31.3 ac.
31.2 ac.
30 ac.
1.3 ac.
8.8 ac.
2.1 ac.
2.2 ac.
2.5 ac.

37.4 ac.

24.78 ac.
1.34 ac.
29.4 ac.
21 ac.
9.7 ac.
15.5 ac.
20.12 ac.
1.24 ac.
38.76 ac.
28.2 ac.
32.43 ac.
40 ac.
3.9 ac.
40 ac.
25.96 ac.
18.22 ac.
2.45 ac.
8.19 ac.
3.84 ac.
0.98 ac.
1.2 ac.
0.07 ac.
23.32 ac.
10.41 ac.
16.33 ac.
3.9 ac.
7.19 ac.
2.75 ac.
5.18 ac.
28.84 ac.
30.8 ac.
25.31 ac.
14.94 ac.
4.59 ac.
3.98 ac.
33.52 ac.
37.5 ac.
22.76 ac.
20.58 ac.
14.19 ac.
11.44 ac.
39.8 ac.
35.5 ac.
12.7 ac.
10.1 ac.

24.7 ac.
34 ac.
2 ac.
8.8 ac.
1 ac.
31.3 ac.
7.5 ac.

12.5 ac.
23.8 ac.
17.4 ac.
23.8 ac.
1.8 ac.
31.88 ac.

0.41 ac.

2.86 ac.

28.8 ac.

14.94 ac.

0.41 ac.

3.98 ac.

0.5 ac.

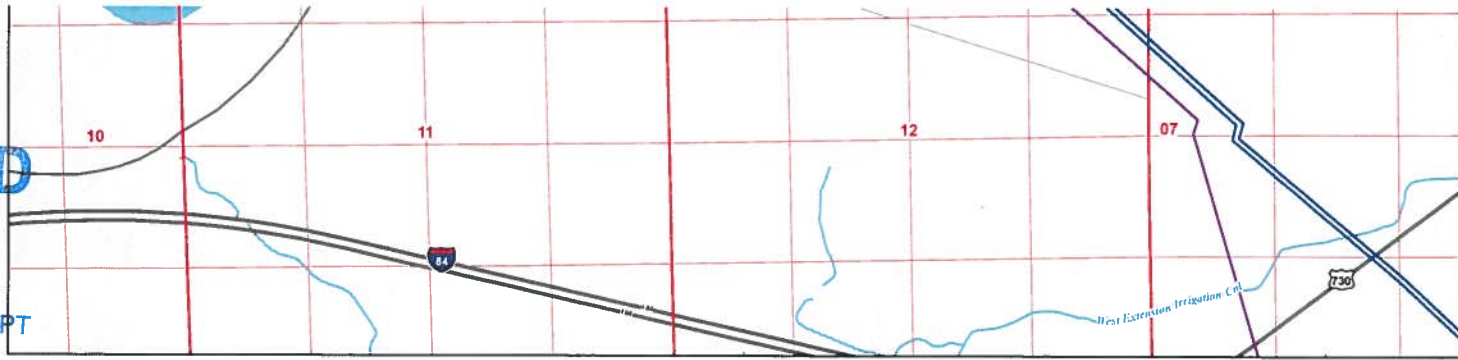
1.9 ac.

0.72 ac.

RECEIVED

OCT 24 2014

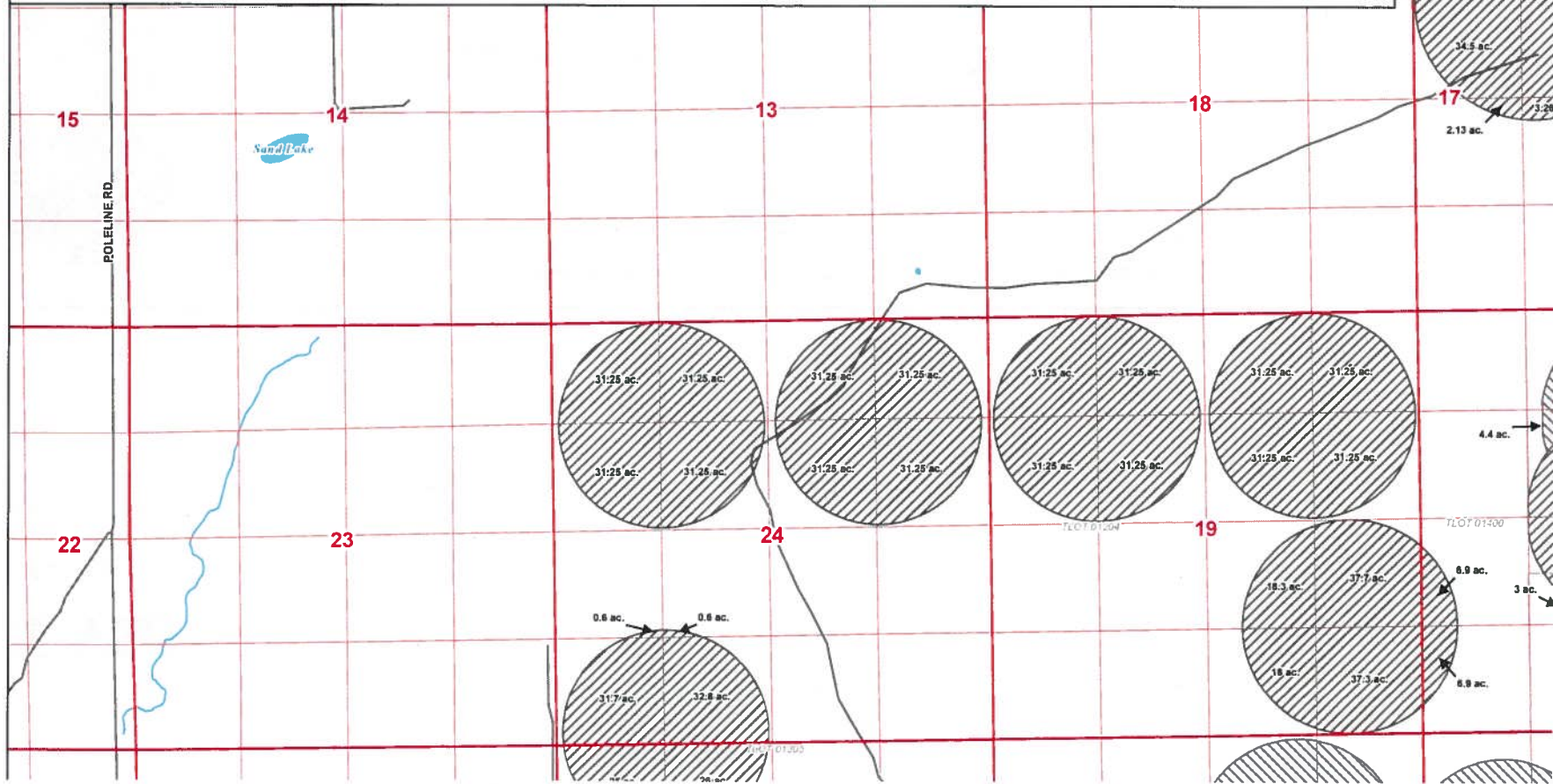
WATER RESOURCES DEPT
SALEM, OREGON



PROPOSED WELL LOCATION DESCRIPTIONS

Well 01: Located 1,230' North and 1,330' East from the SW corner of Section 1, Township 4 North, Range 25 East, W.M.
Well 02: Located 120' North and 2,500' East from the SW corner of Section 1, Township 4 North, Range 25 East, W.M.
Well 03: Located 1,500' North and 2,860' East from the SW corner of Section 1, Township 4 North, Range 25 East, W.M.

Well 04: Located 2,878' North and 3,120' East from the SW corner of Section 1, Township 4 North, Range 25 East, W.M.
Well 05: Located 740' South and 1,860' West from the NE corner of Section 12, Township 4 North, Range 25 East, W.M.
Well 06: Located 150' South and 1,760' West from the NE corner of Section 12, Township 4 North, Range 25 East, W.M.
Well 07: Located 2,500' North and 100' West from the SE corner of Section 1, Township 4 North, Range 25 East, W.M.

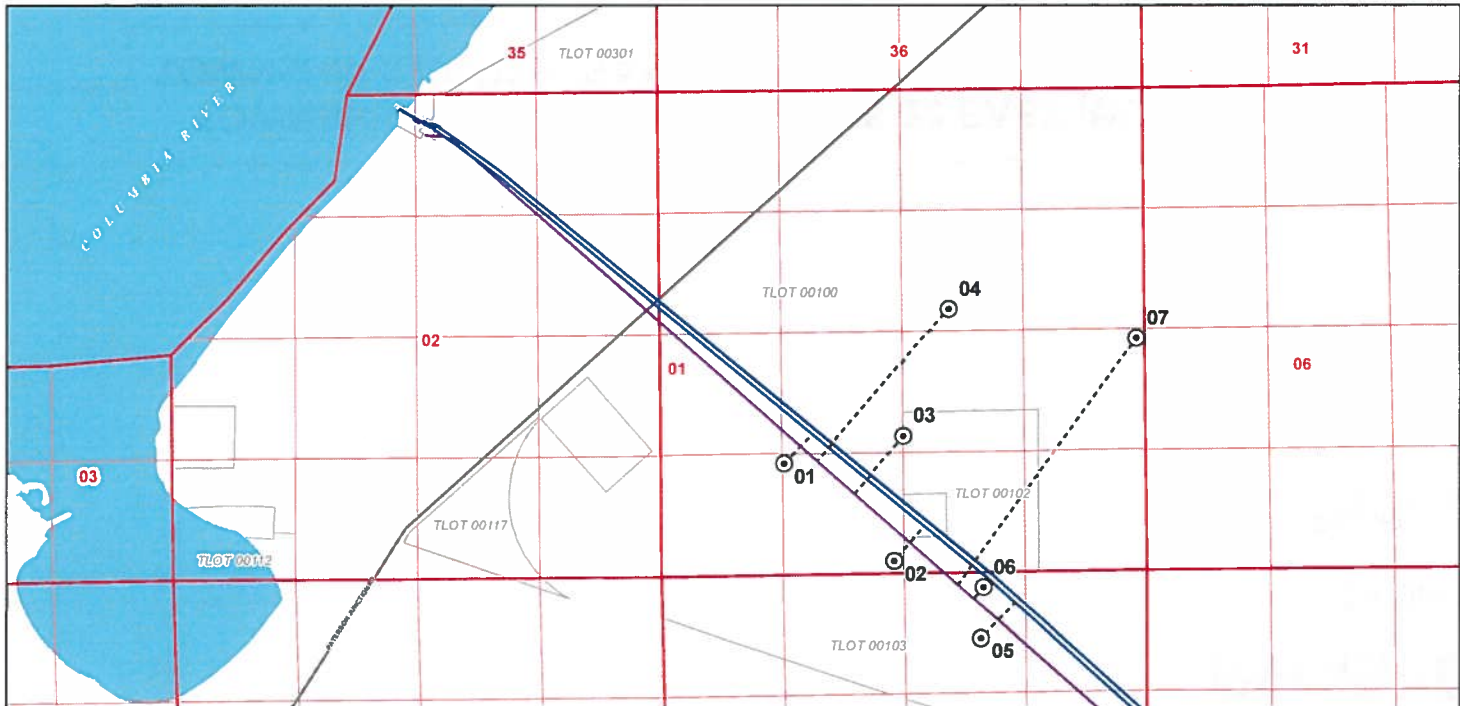


RECEIVED

OCT 24 2014

WATER RESOURCES DEPT
SALEM, OREGON

PROPOSED POINTS OF APPROPRIATION



RECEIVED

OCT 24 2014

WATER RESOURCES DEPT
SALEM, OREGON

TOWNSHIP 2 NORTH, RANGES 27 & 28 EAST (W.M.)
TOWNSHIP 3 NORTH, RANGES 26, 27, & 28 EAST (W.M.)

