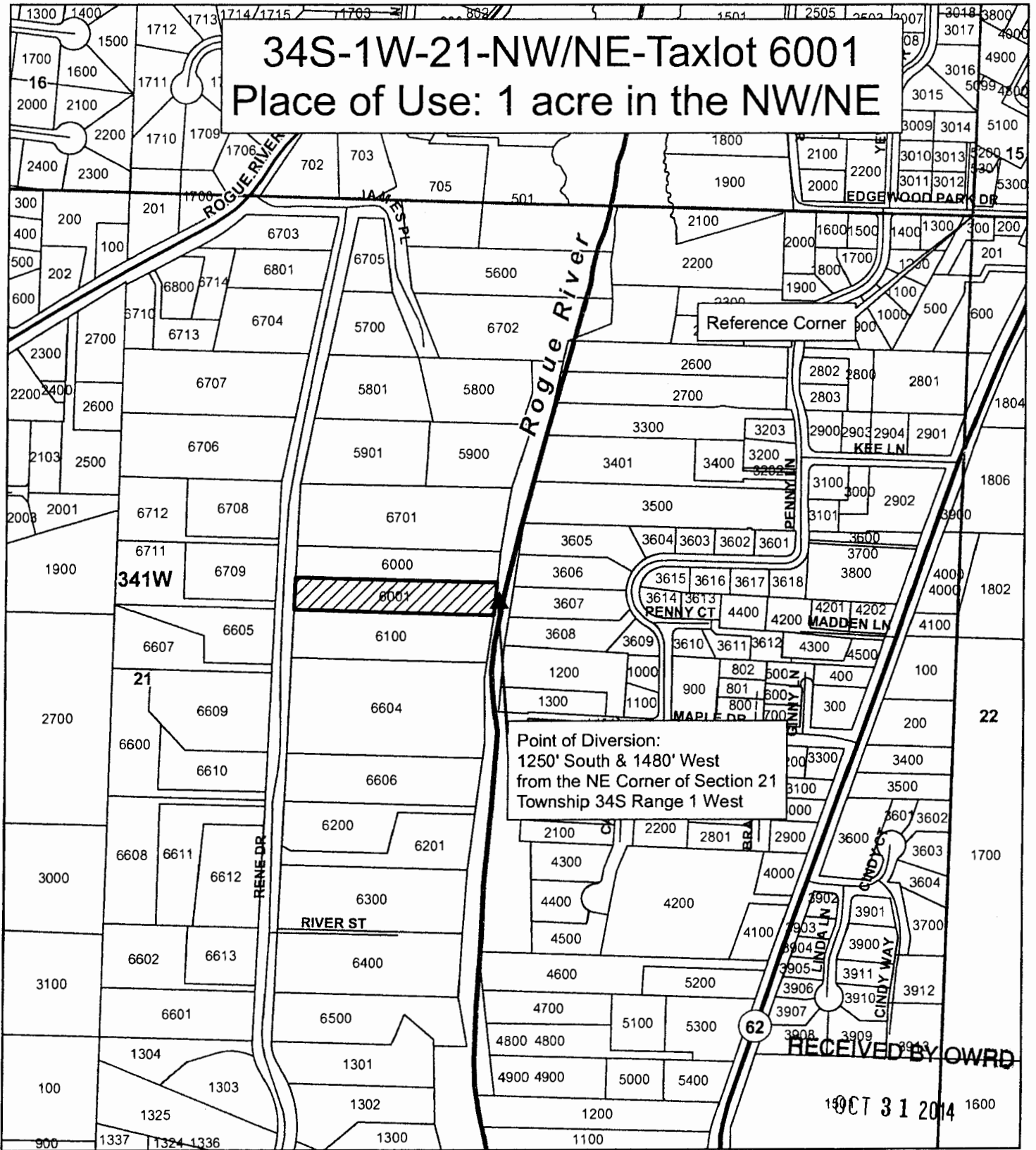


# 34S-1W-21-NW/NE-Taxlot 6001

## Place of Use: 1 acre in the NW/NE



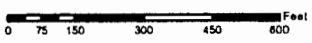
Point of Diversion:  
1250' South & 1480' West  
from the NE Corner of Section 21  
Township 34S Range 1 West

RECEIVED BY OWRD  
OCT 31 2014

### Legend

- Point of Diversion
- Place of Use
- Taxlot 6001
- Taxlots
- Townships
- Sections

1 inch = 400 feet



SALEM, OR  
JACKSON COUNTY  
WATERMASTER

Prepared by Travis Kelly

This map is based on a digital database compiled by Jackson County from a variety of sources. Jackson County cannot accept responsibility for errors, omissions, or positional accuracy. There are no warranties, expressed or implied.

OCT 14 2014

S-88029

SALEM, OR