

SECTION 11 T.14S. R.4W. W.M. SEE MAP 14 4W 2

14S04W11
LINN COUNTY

Linn County
CROOK DR.

CANCELLED:

1" = 600'
TAX LOT 200

well 1940' S
70' W

from NE cor Sec 11

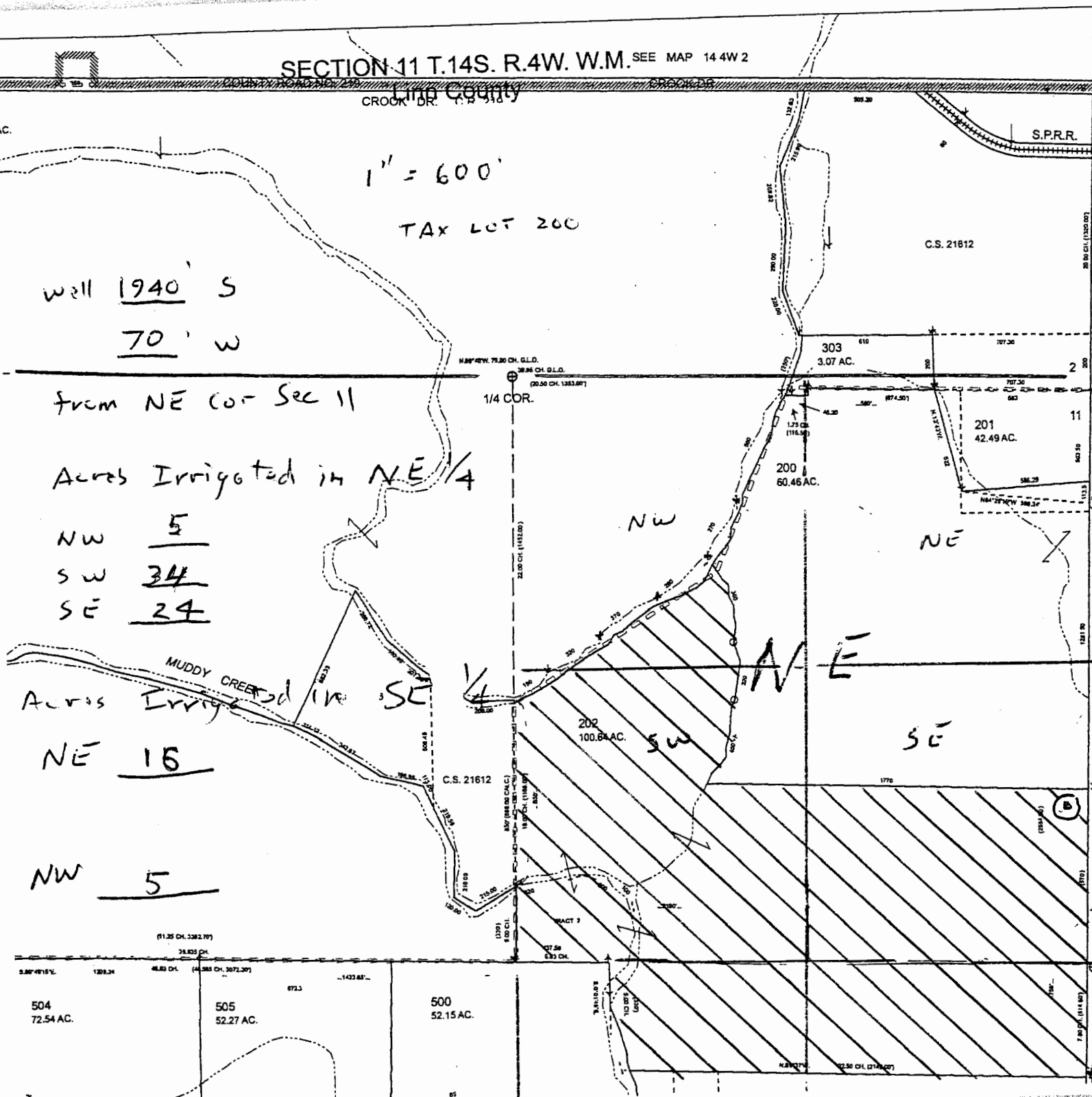
Acres Irrigated in NE 1/4

NW 5
SW 34
SE 24

Across Irrigated in SE 1/4

NE 16

NW 5



SALEM, OR

OCT 31 2014

RECEIVED BY OWRD

SEE MAP 14 4W 12

G-17956

