

Existing primary water right



725 Summer St NE, Sal

6-17-2008 5-17-2010

Search

Select Search Method:

Water Right TRS Lat/Long

Application:

Permit:

Certificate:

Claim:

Transfer:

POD Source: Equal

(Draw box on map.)

Identify Non-Water Right Features

Tools

Legend

Layers

Print

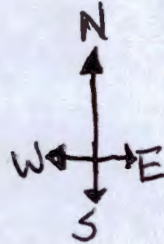
POD

POU

RECEIVED BY OWRD

NOV 07 2014

SALEM, OR



Primary existing

40 acres in NENE of 10

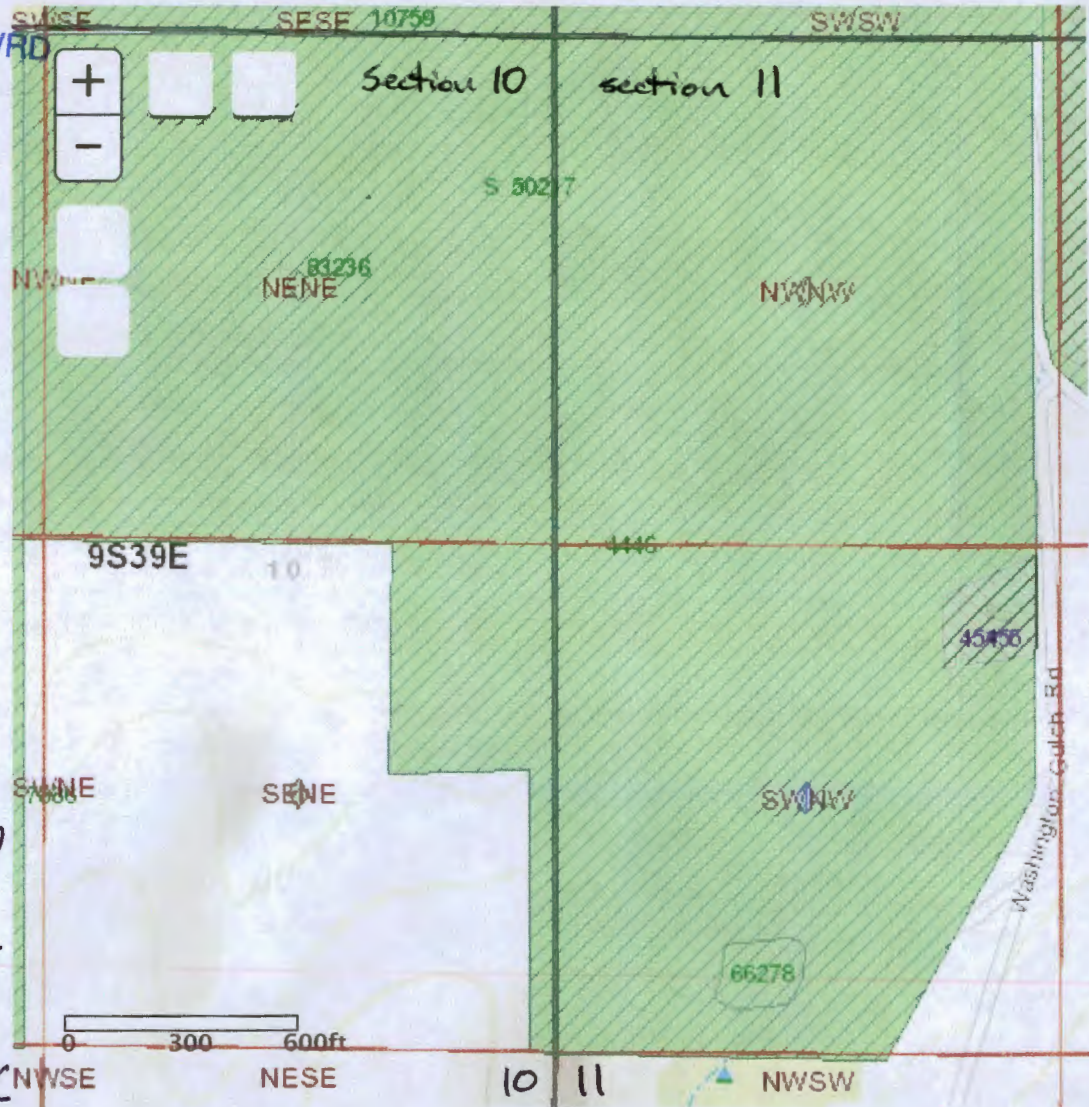
38 acres in NWNW of 11

32 acres in SWNW of 11

12 acres SENE of 10

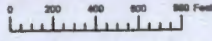
Primary applying for

28 acres in SENE of 10



6-1796c

THIS MAP WAS PREPARED FOR ASSESSMENT PURPOSE ONLY



SECTION 10 T.9S. R.39E. W.M.
BAKER COUNTY
1" = 400'


RECEIVED BY OWRD


09S39E10

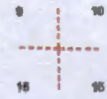
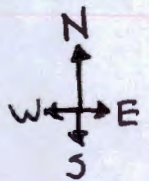
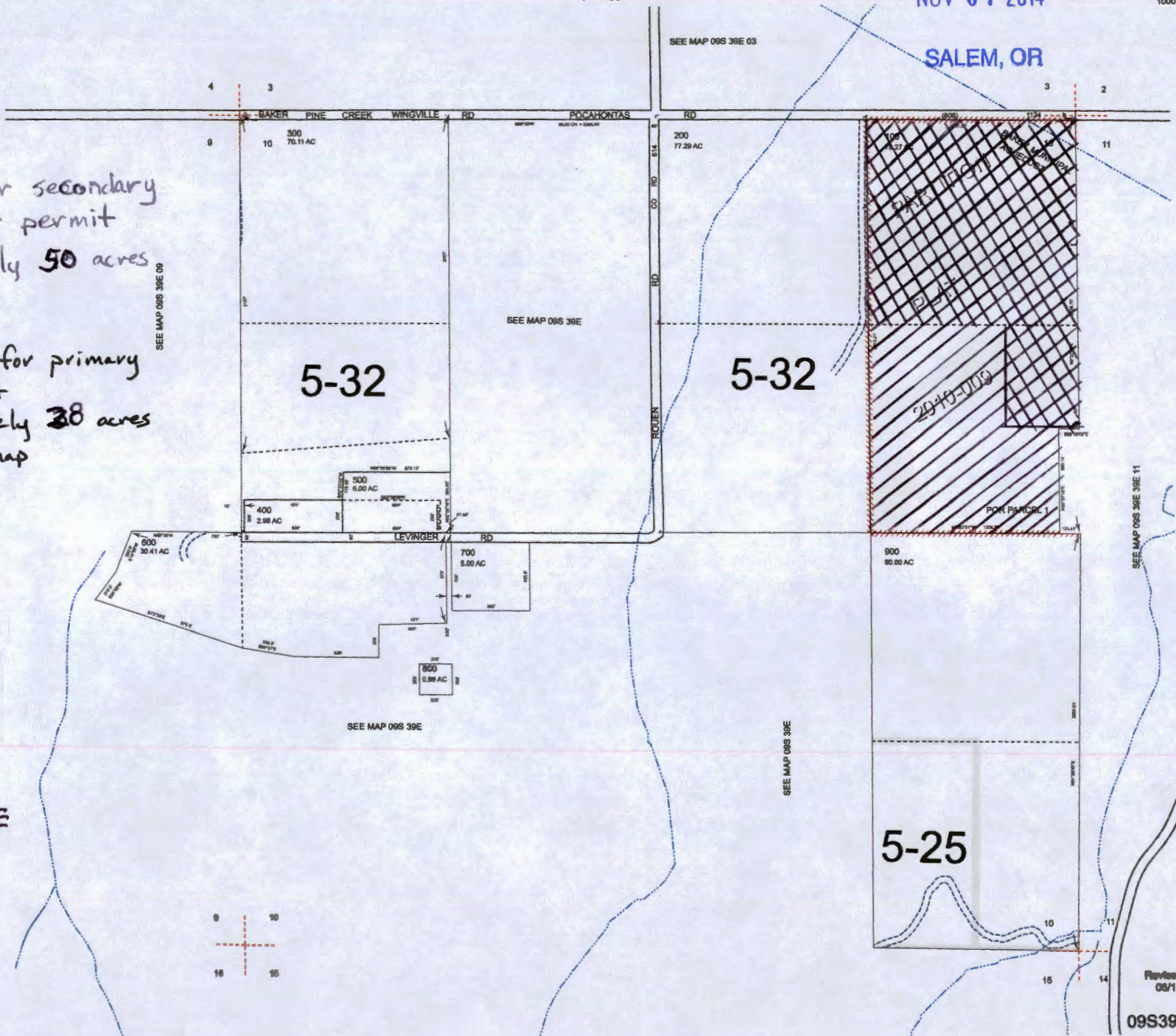
NOV 07 2014

Cancelled 1000

SALEM, OR

 Application for secondary ground water permit approximately 50 acres this map

 Application for primary water right approximately 38 acres for this map

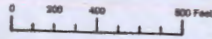


Reviewed: DBJ
08/17/2014

09S39E10

09671-5

THIS MAP WAS PREPARED FOR ASSESSMENT PURPOSE ONLY



SECTION 11 T.9S. R.39E. W.M.
BAKER COUNTY
1" = 400'

09S39E11

CANCELLED:
1400
300

RECEIVED BY OWRD

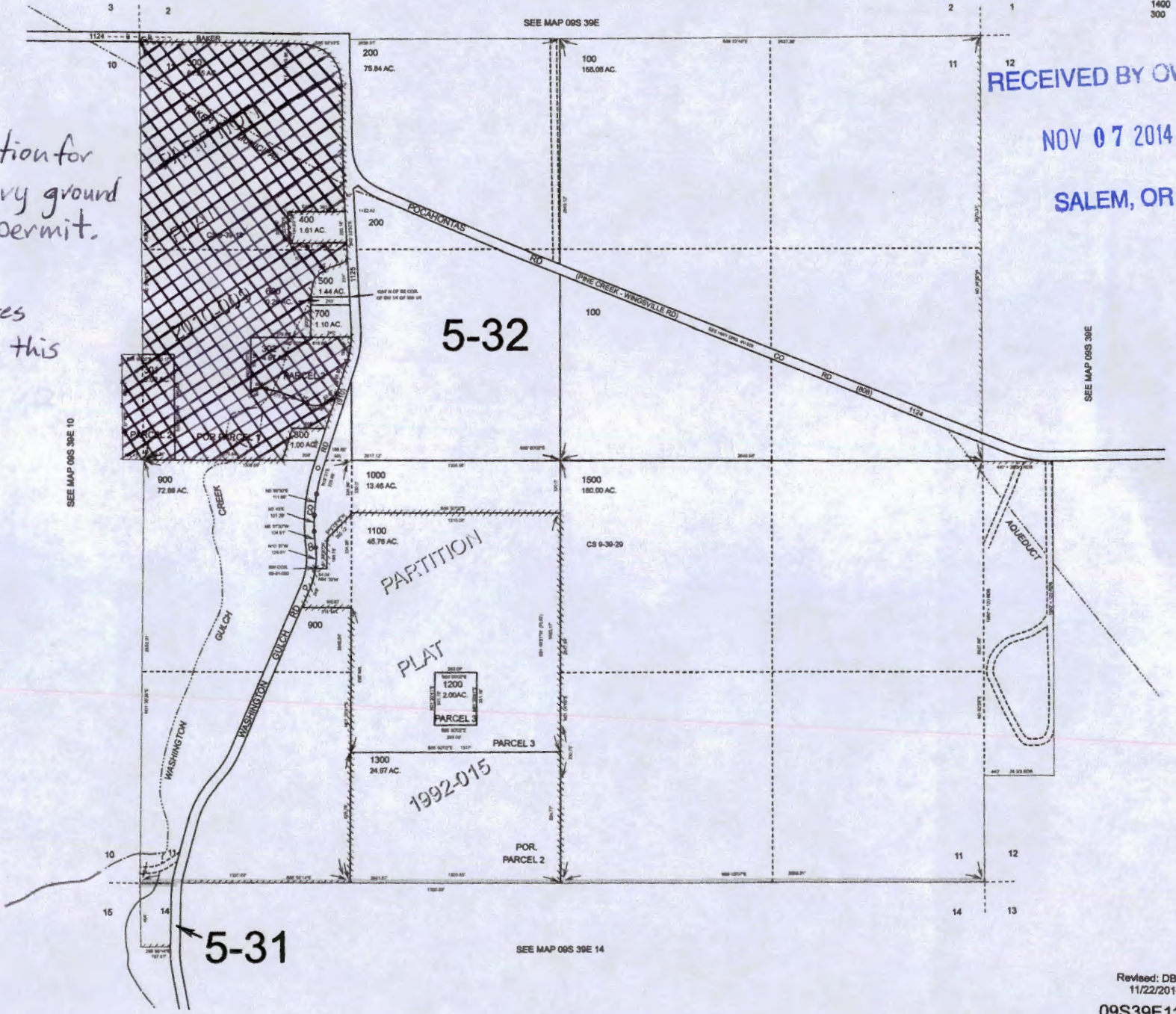
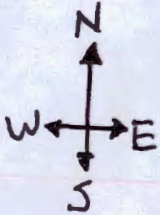
NOV 07 2014

SALEM, OR



Application for secondary ground water permit.

71.52 acres total for this map



5-32

5-31

1992-015

SEE MAP 09S 39E 14

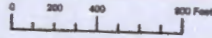
SEE MAP 09S 39E

SEE MAP 09S 39E 10

Revised: DBJ
11/22/2010

09S39E11

THIS MAP WAS PREPARED FOR ASSESSMENT PURPOSE ONLY



SECTION 11 T.9S. R.39E. W.M.
BAKER COUNTY
1" = 400'

09S39E11

CANCELLED:
1400
300

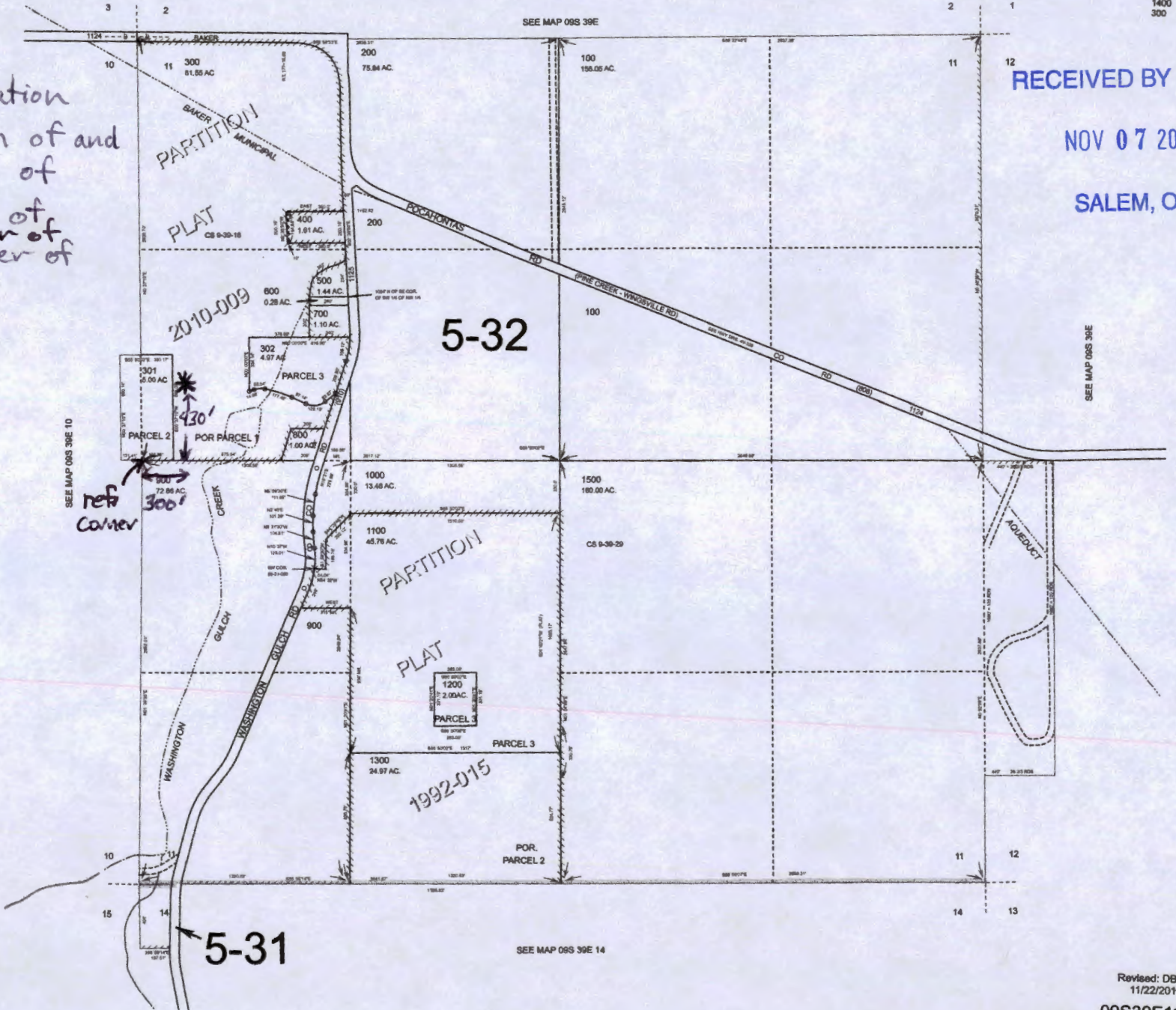
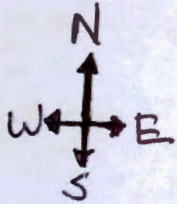
6-17-2010

* Well #1 location
430' north of and
300' east of
SW corner of
NW quarter of
section 11

RECEIVED BY OWRD

NOV 07 2014

SALEM, OR



SEE MAP 09S 39E 10

SEE MAP 09S 39E

SEE MAP 09S 39E

SEE MAP 09S 39E 14

Revised: DBJ
11/22/2010

09S39E11

THIS MAP WAS PREPARED FOR ASSESSMENT PURPOSE ONLY



SECTION 10 T.9S. R.39E. W.M.
BAKER COUNTY
1" = 400'

RECEIVED BY OWRD

09S39E10

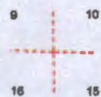
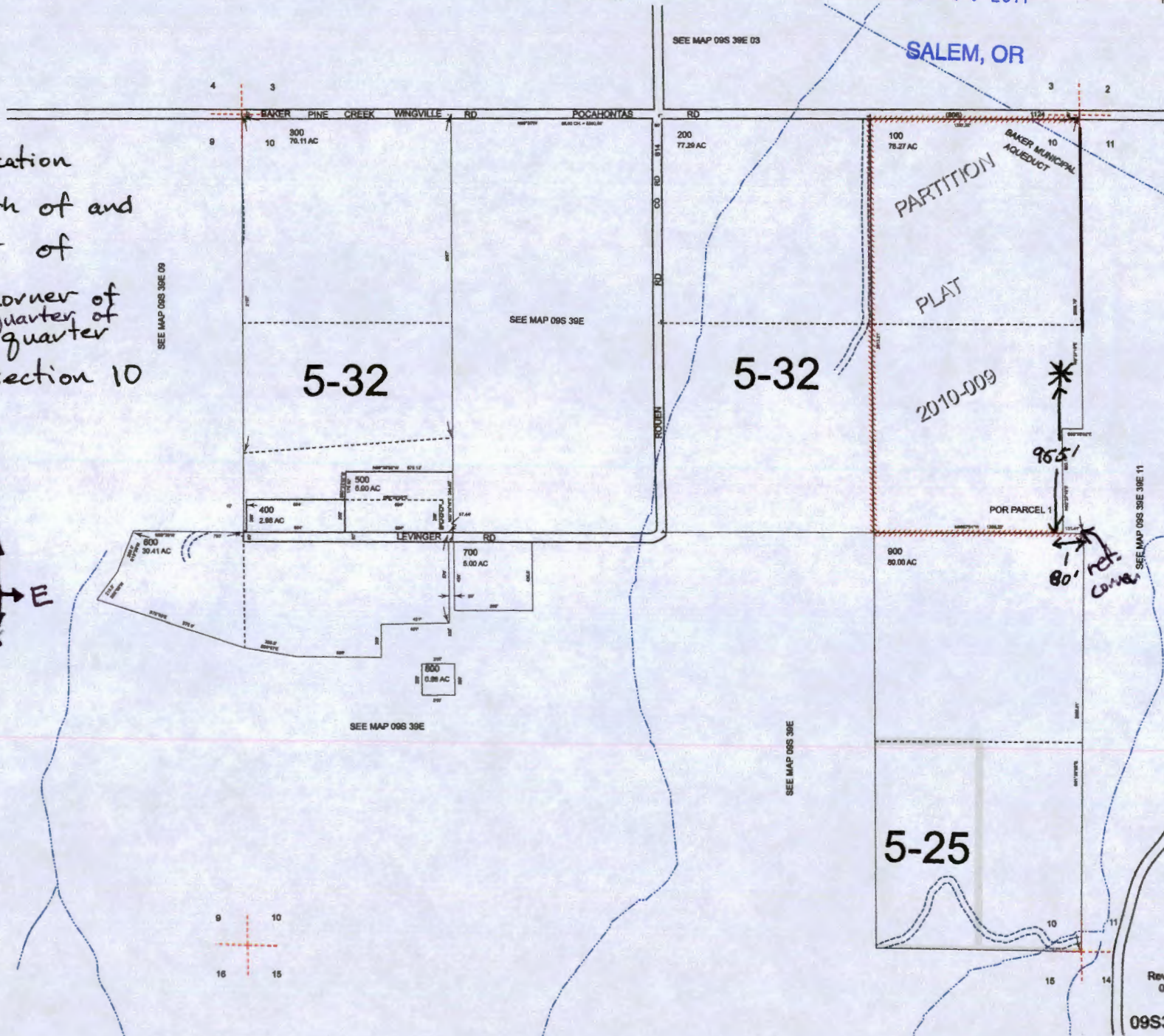
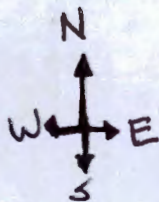
NOV 07 2014

Cancelled 1000

SALEM, OR

6-17-2014

* Well #2 location
955' North of and
80' west of
N/E corner of
quarter of
quarter
of section 10



Revised: DBJ
06/17/2014

09S39E10