

THIS MAP WAS PREPARED FOR ASSESSMENT PURPOSE ONLY.

SW1/4 SEC.14 T.26S. R.5W. W.M.
DOUGLAS COUNTY
1" = 200'

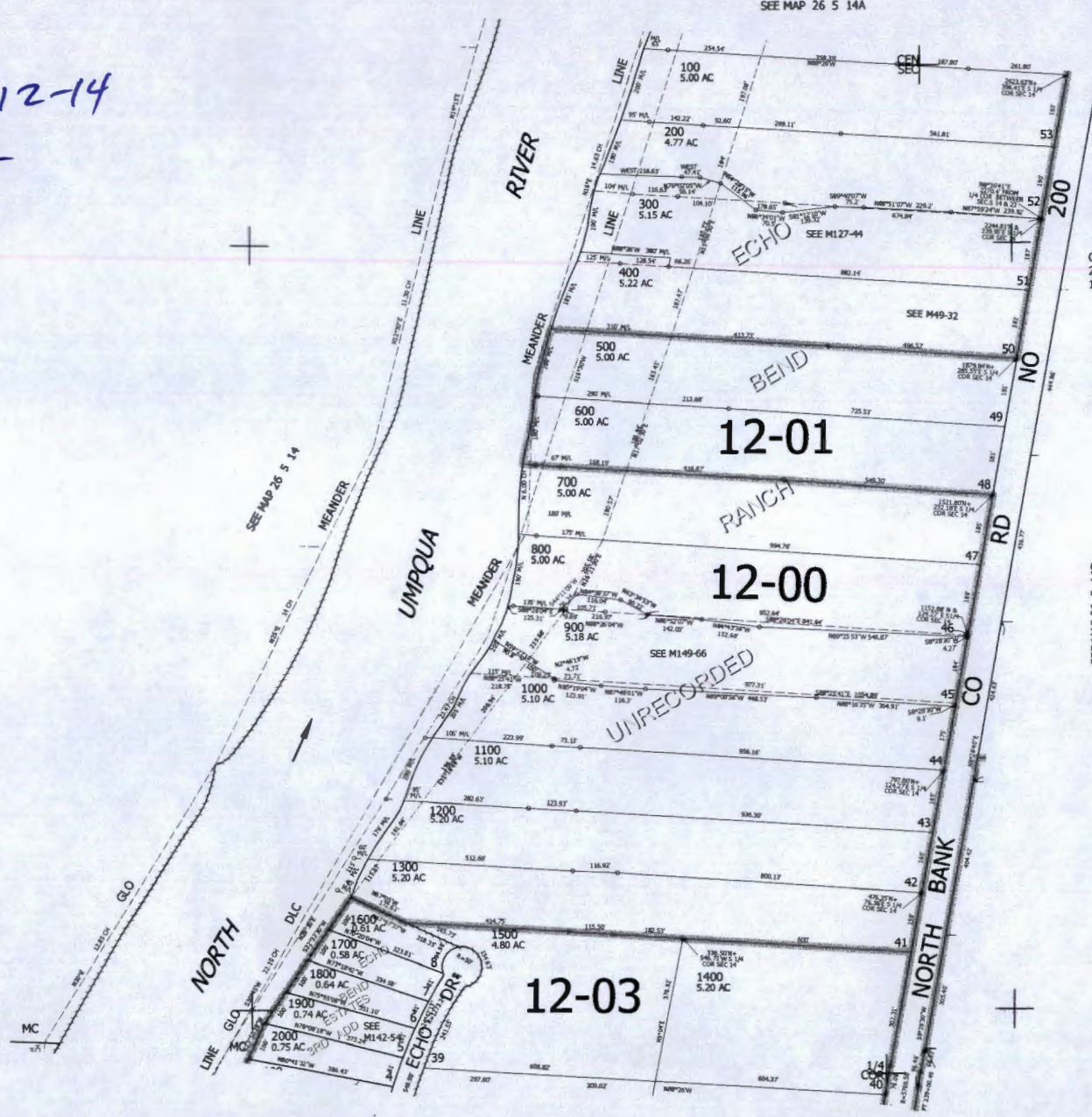
REVISED ON
5-2-13

26 5 14C

1/4
COR

Added 11-12-14
KLL

SEE MAP 26 5 14A



CANCELLED NO'S
201 301 901
1001 902 801

SEE MAP 26 5 14D

608,000

SEE MAP 26 5 23

4,188,000

26 5 14C

5-0001

15 14
22 23

**Water Right Application Map
Henry Russel and Debbie Hackler**

SW 1/4 Sec. 14 T.26S. R.5W

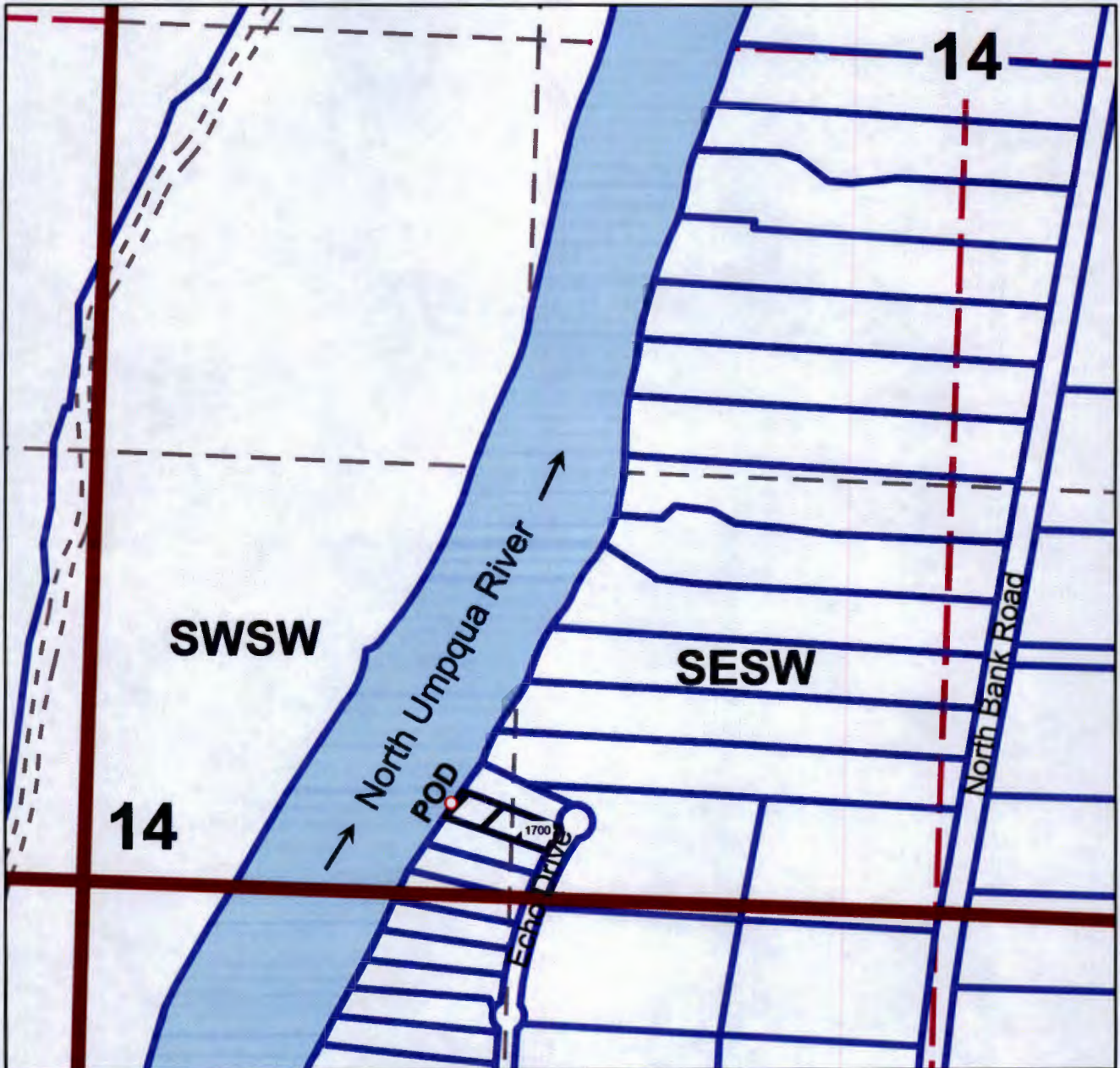
Douglas County

Scale: 1" = 500'

RECEIVED BY OWRD

NOV 07 2014

SALEM, OR



POD is located 280 ft. north and 1130 ft. east from the southwest corner of Section 14

S 88031