

RECEIVED

DEC 19 2013

WATER RESOURCES DEPT
SALEM, OREGON

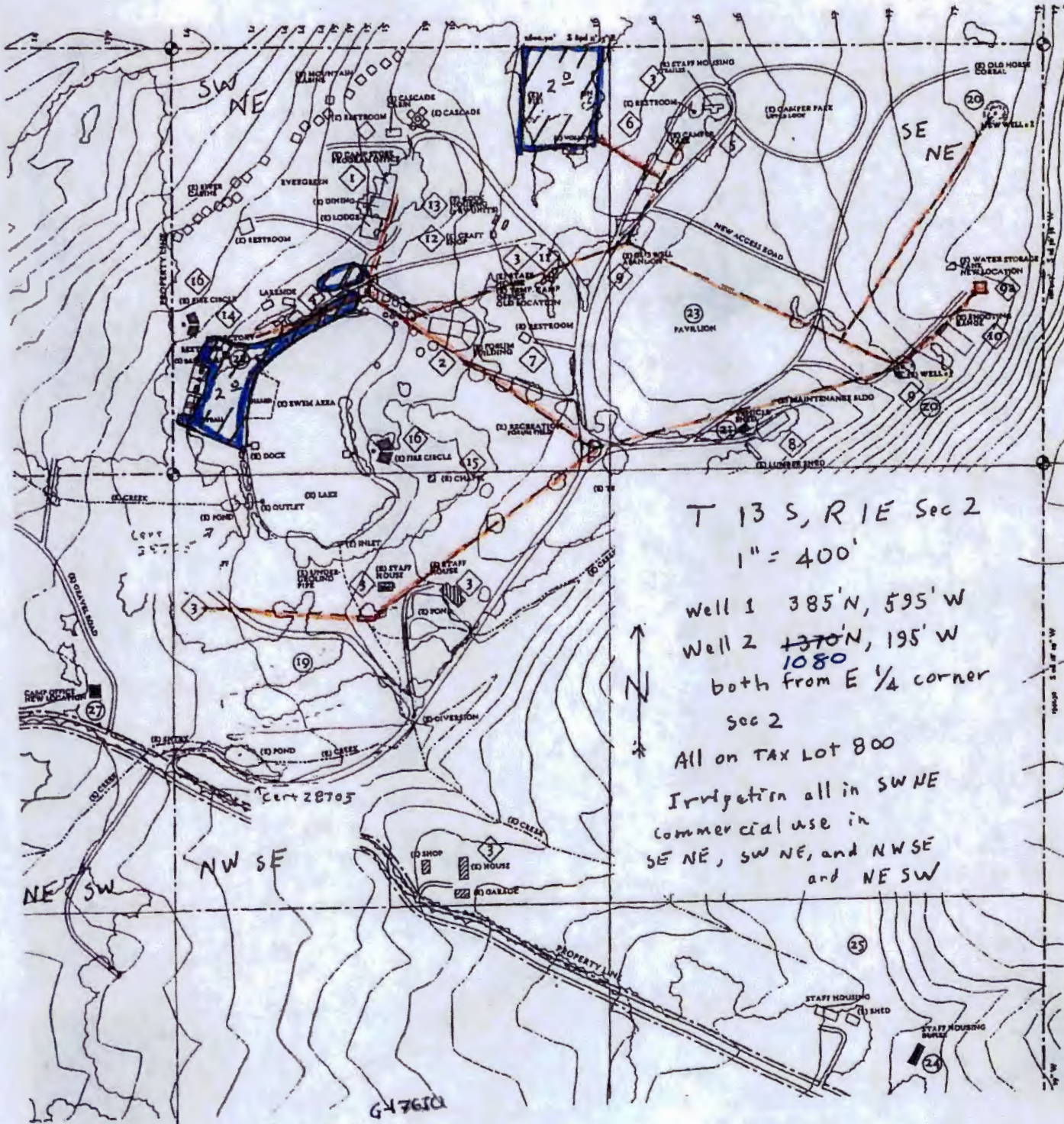
Camp Tadmor
43943 McDowell Creek Dr.
Lebanon, OR 97355

Approved as corrected
by David R. B...
12/19/13

RECEIVED

FEB 13 2013

WATER RESOURCES DEPT
SALEM, OREGON



T 13 S, R 1 E Sec 2

1" = 400'

Well 1 385' N, 595' W

Well 2 1370' N, 195' W

both from E 1/4 corner

sec 2

All on TAX LOT 800

Irrigation all in SW NE

Commercial use in
SE NE, SW NE, and NW SE
and NE SW

PERMIT G-17305

G47610

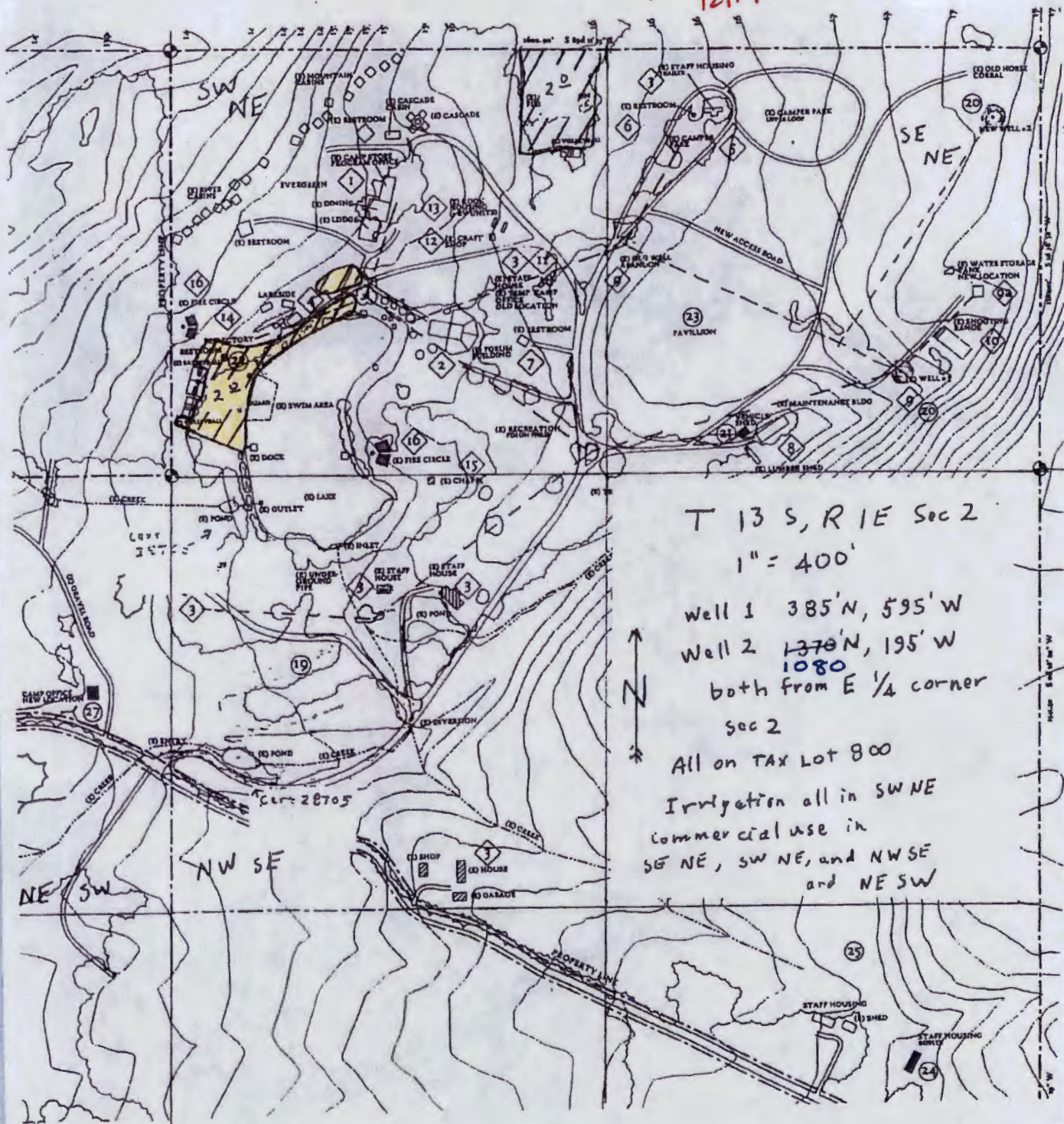
RECEIVED

DEC 19 2013

WATER RESOURCES DEPT
SALEM, OREGON

Camp Tadmor
43943 McDowell Creek Dr.
Lebanon, OR 97355

Approved as corrected
by Daniel R. B...
12/19/13



T 13 S, R 1 E Sec 2
 1" = 400'
 Well 1 385' N, 595' W
 Well 2 1378' N, 195' W
 1080
 both from E 1/4 corner
 sec 2
 All on TAX LOT 800
 Irrigation all in SW NE
 Commercial use in
 SE NE, SW NE, and NW SE
 and NE SW