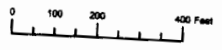


THIS MAP WAS PREPARED FOR ASSESSMENT PURPOSE ONLY



SE1/4 SECTION 14 T.15S. R.42E. W.M.
MALHEUR COUNTY
1" = 200'

15S 42E 14D

RECEIVED BY OWRD

JAN 31 2014

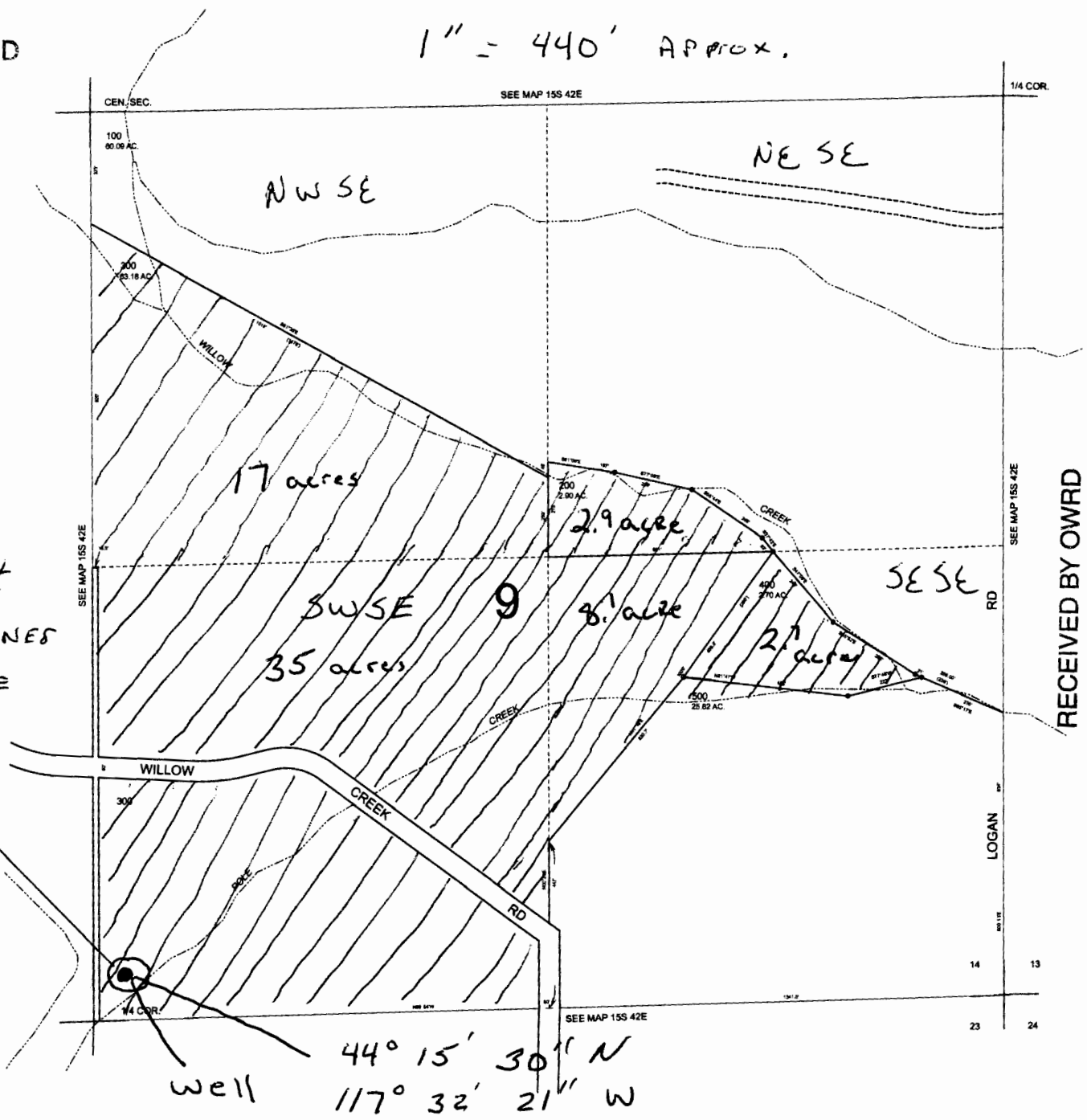
SALEM, OR

RECEIVED BY OWRD

SEP 29 2014

SALEM, OR

1" = 440' APPROX.



Well location
140' North & 95' East
from south quarter corners
of sec 14, T-15s R-42E

SW corner of
SW SE 1/4 1/4
of T-15s, R-42E
Sec 14

well
44° 15' 30" N
117° 32' 21" W

RECEIVED BY OWRD

NOV 28 2014

SALEM, OR

G-17967