

S.E.1/4 S.E.1/4 SEC. 13 T.17S. R.4W. W.M.  
Lane County  
1" = 50'

REVISIONS  
1/16/2013 - LCAT 14 - CONVERT MAP TO GIS

FOR ASSESSMENT AND  
TAXATION ONLY

Acres 6.4 total

TL 101	2.3	All in SE SE
102	.2	
103	.8	
104	.4	
105	1.5	
106	1.2	



SEE MAP  
17031832

SEE MAP  
17031833

004-00

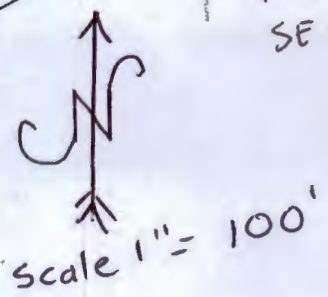
Well

Well is 1185' N  
475' W from  
SE cor Sec 13

RECEIVED BY OWRD

JAN 02 2015

SALEM, OR



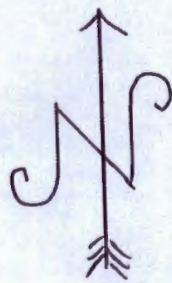
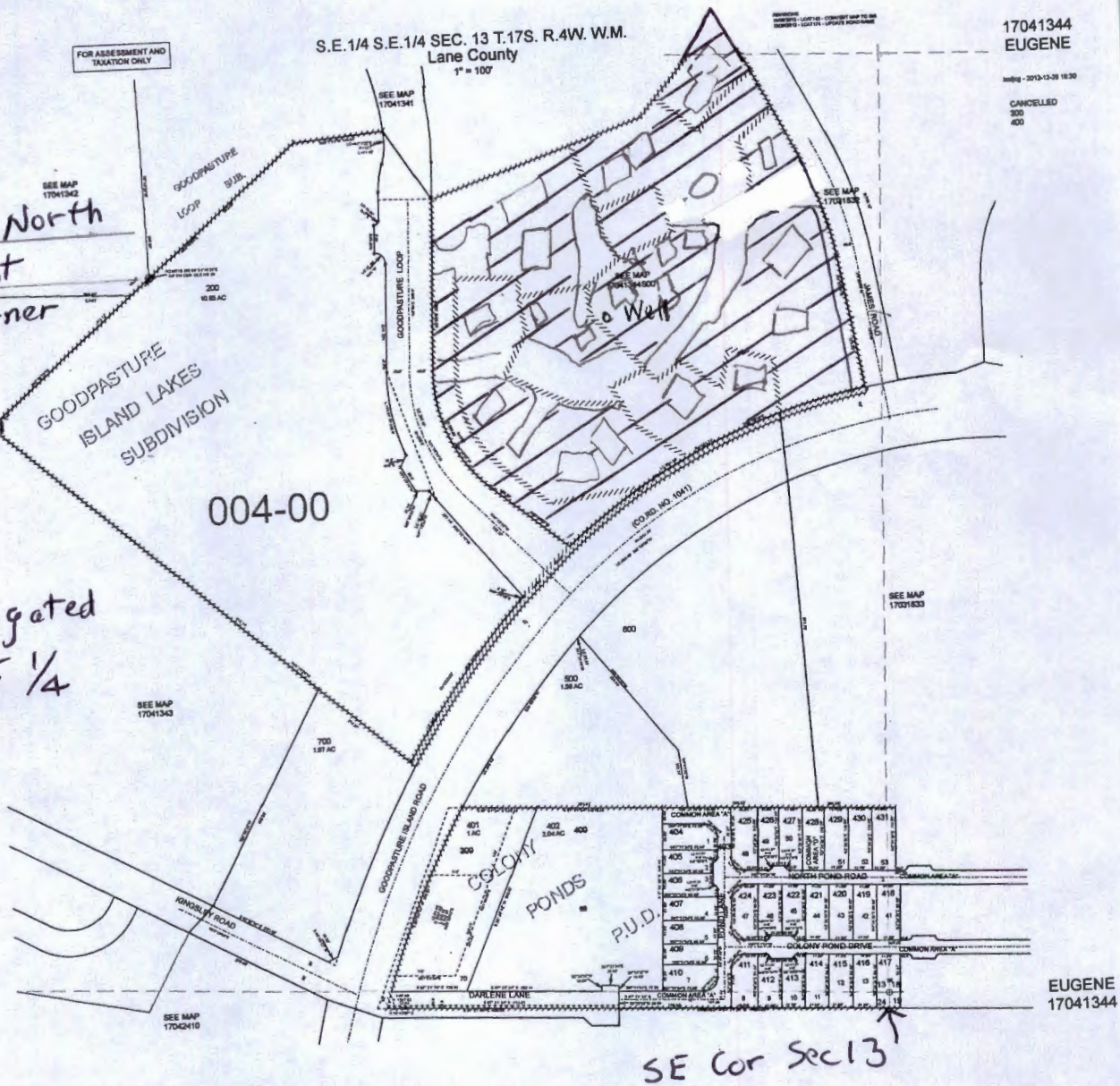
Map 2 of 2 Island Lakes  
Condominiums  
G1-17978

# Map 1 of 2 Island Lakes Condominiums

Well is 1185' North  
and 475' West  
from SE corner  
Section 13

T17S R4W  
W.M.

6.4 Ac irrigated  
in SE 1/4 SE 1/4  
Sec 13



scale 1" = 300'

RECEIVED BY OWRD

JAN 02 2015

SALEM, OR

G-17978