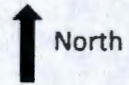


T3S R1E S30

1" = 1320'

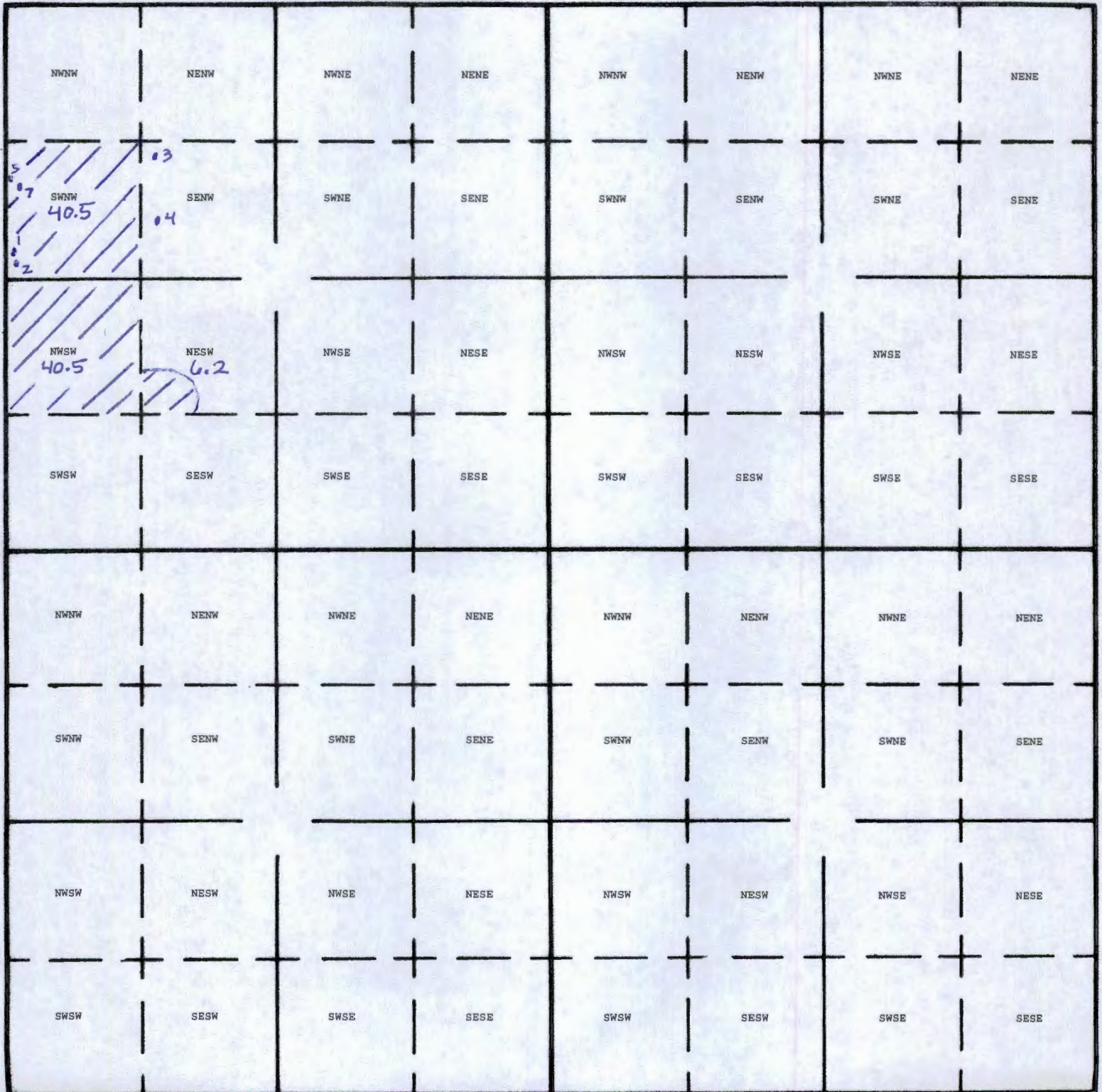
Tax Lot: 1000, 1100, 1200

Bob Gabriel



Application G-

Permit G-



Well 1: 1080' S & 65' E fr NW cor, SWNW, Sec 30

Well 2: 1155' S & 75' E fr NW cor, SWNW, Sec 30

Well 3: 150' S & 1415' E fr NW cor, SWNW, Sec 30

Well 4: 750' S & 1430' E fr NW cor, SWNW, Sec 30

Well 5: 340' S & 45' E fr NW cor, SWNW, Sec 30

Well 7: 425' S & 105' E fr NW cor SWNW Sec 30

RECEIVED

JAN 27 2015

WATER RESOURCES DEPT
SALEM, OREGON

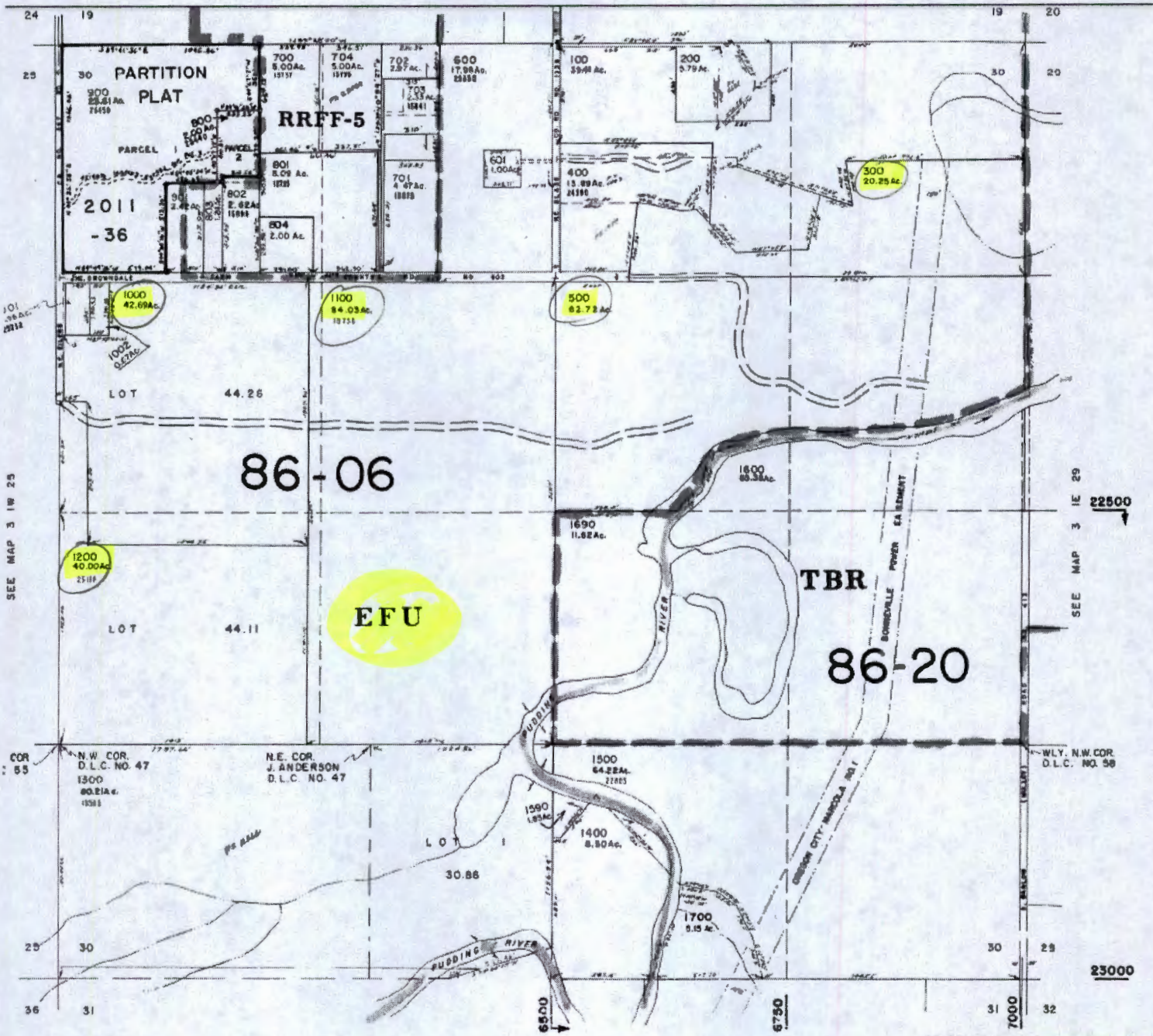
G-17998

New primary irrigation:

SWNW 40.5 ac

NESW 6.2 ac

NWSW 40.5 ac



RECEIVED

JAN 27 2015

WATER RESOURCES DEPT
SALEM, OREGON

G-17988

T. 3S. R1E., W.M.

P.O.U. - PLACE OF IRRIGATION USE
WATER USE ACREAGE

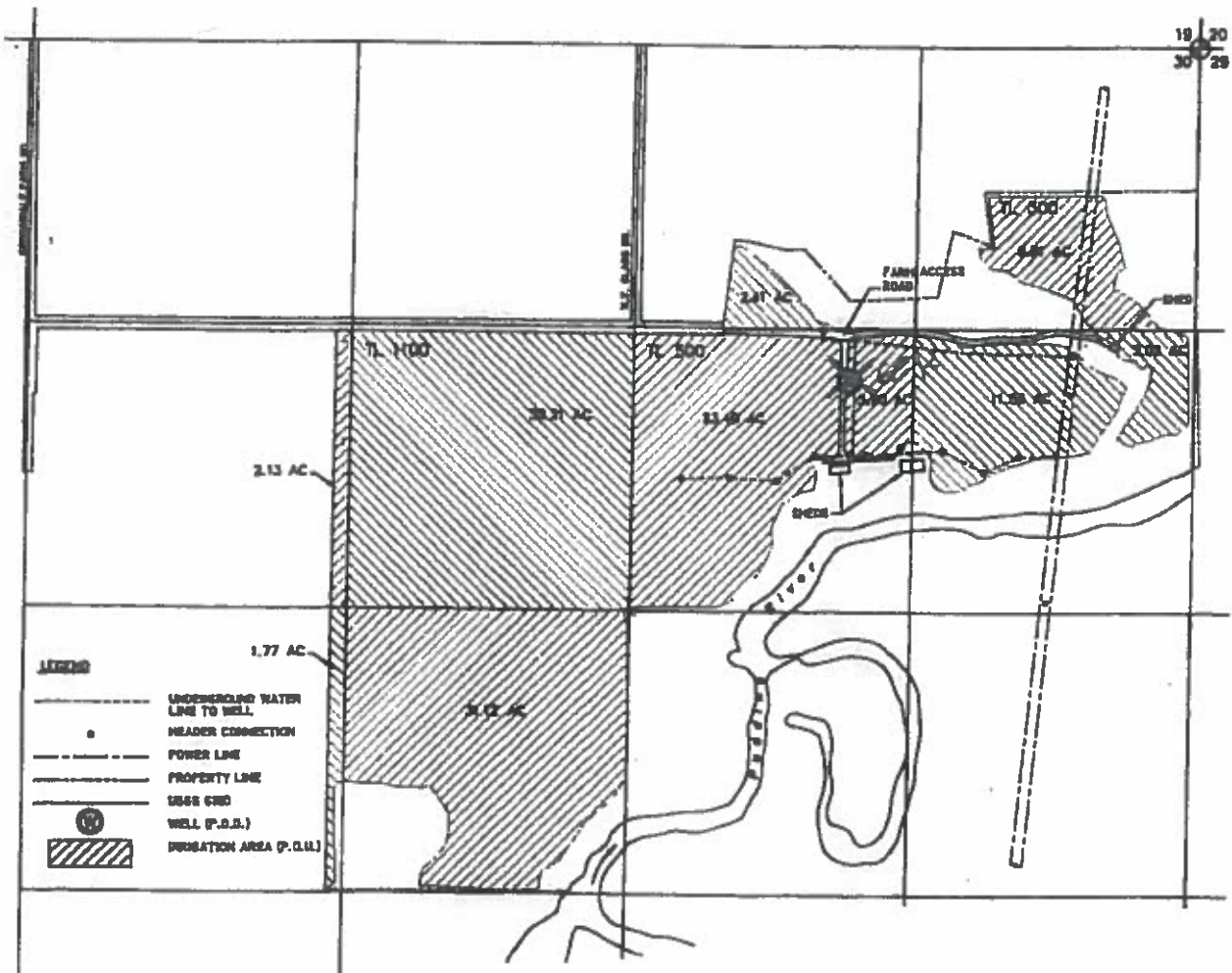
NE 1/4 NW 1/4 SW 1/4 SECTION 30, T3S, R1E, W1

NE 1/4 NE 1/4	- 8.81 AC
NW 1/4 NE 1/4	- 2.41 AC
SE 1/4 NE 1/4	- 14.82 AC
SW 1/4 NE 1/4	- 27.30 AC
SE 1/4 NW 1/4	- 38.21 AC
SW 1/4 NW 1/4	- 2.13 AC
NE 1/4 SW 1/4	- 31.12 AC
NW 1/4 SW 1/4	- 1.77 AC
TOTAL	= 124.37 AC

SCALE: 1"=800'

PREPARATION OF THIS MAP IS FOR THE PURPOSE OF IDENTIFYING THE LOCATION OF THE WATER RIGHT ONLY. THERE IS NO INTENT TO PROVIDE DIMENSIONS OR LOCATION OF PROPERTY OWNERSHIP LINES.

~~NOTE:~~
W216: WELL LOCATION (P.O.B.) IS 3838 FT. N. AND 3810 FT. E. OF SW CORNER OF SECTION 30. *GER*



RECEIVED
JUL 28 2015
OWRD

RECEIVED
JAN 27 2015
WATER RESOURCES DEPT
SALEM, OREGON

G-17988