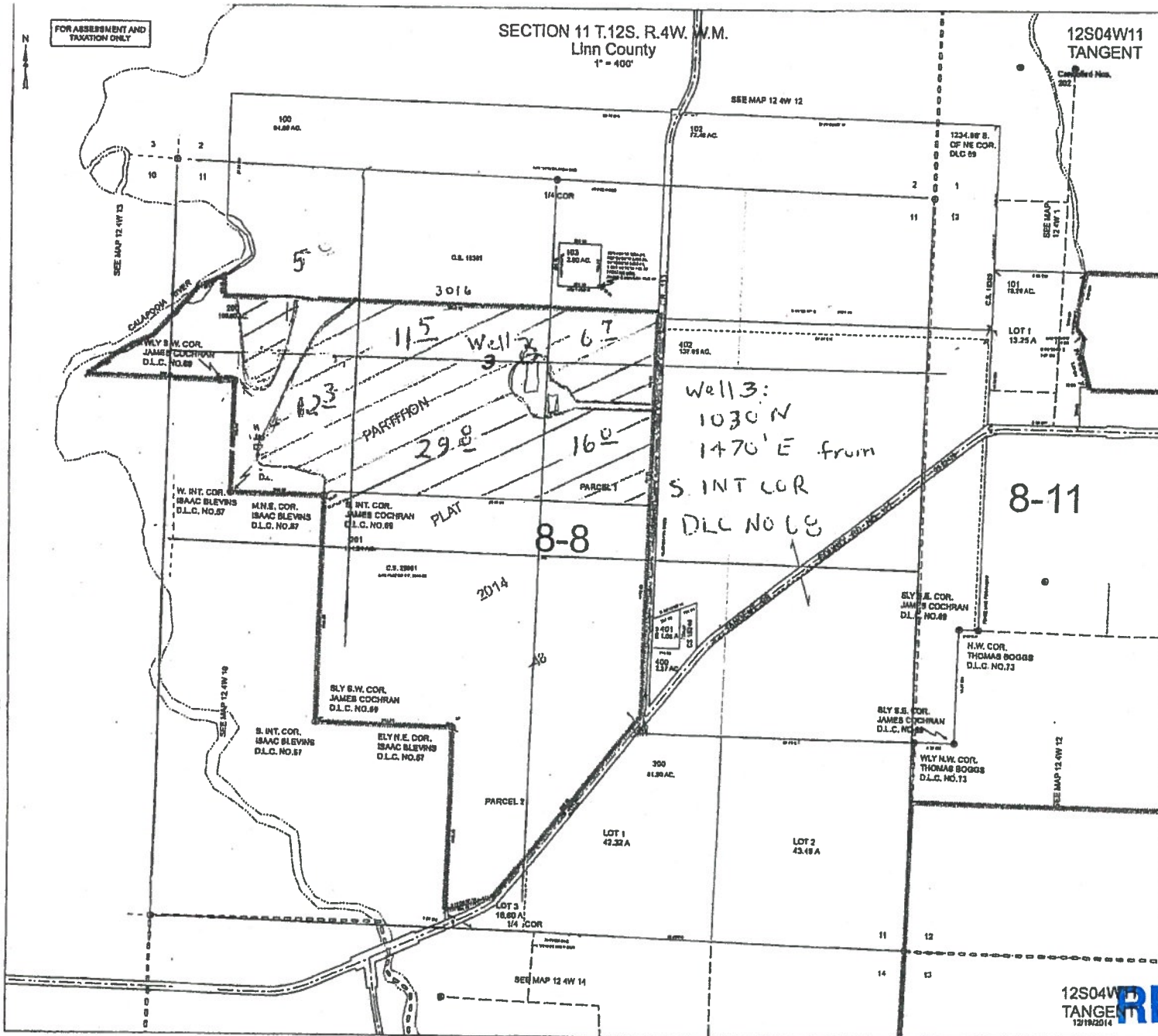


FOR ASSESSMENT AND TAXATION ONLY

SECTION 11 T.12S. R.4W. W.M.
Linn County
1" = 400'

12S04W11
TANGENT



Acres

NW NE	67
SW NE	160
NE NW	115
NW NW	52
SW NW	123
SE NW	223
<hr/>	
	813



Henriksen

12S04W11
TANGENT
12/19/2014

RECEIVED

APR 01 2015

WATER RESOURCES DEPT
SALEM, OREGON