

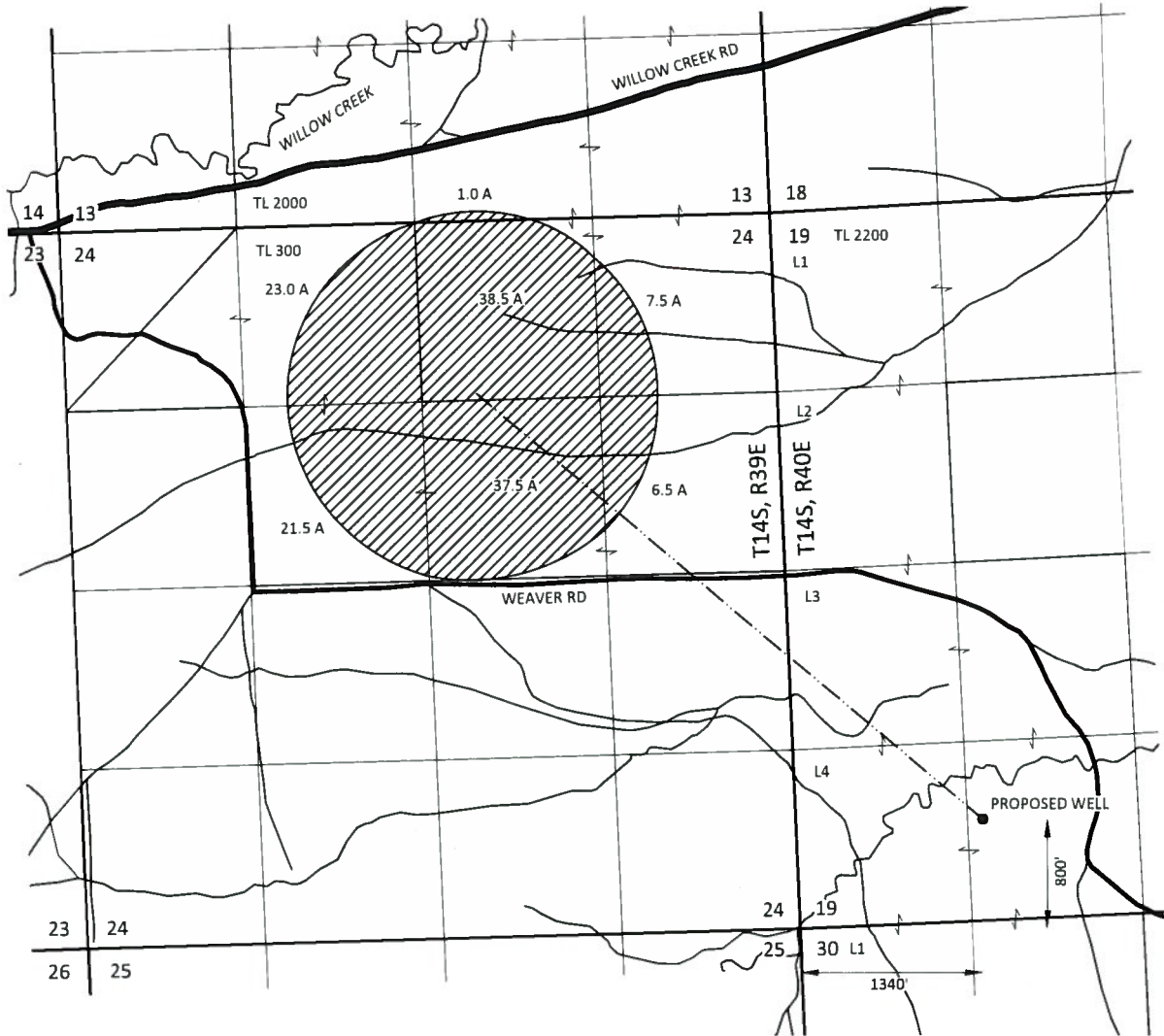
RECEIVED

AUG 24 2017

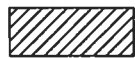


Sections 13 & 24, T14S, R39E, W.M.,  
Section 19, T14S, R40E, W.M.,  
Malheur County, Oregon

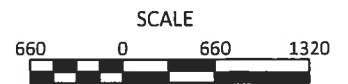
OWRD

AMENDED APPLICATION MAP  
Application G-17998  
Wilks Ranch Oregon Limited



EXPLANATION

-  PROPOSED IRRIGATION  
135.5 A
-  PROPOSED WELL
-  PIPELINE (APPROX.)



August 24, 2017

This map is not intended to provide legal  
dimensions or locations of property  
ownership lines

Figure 1