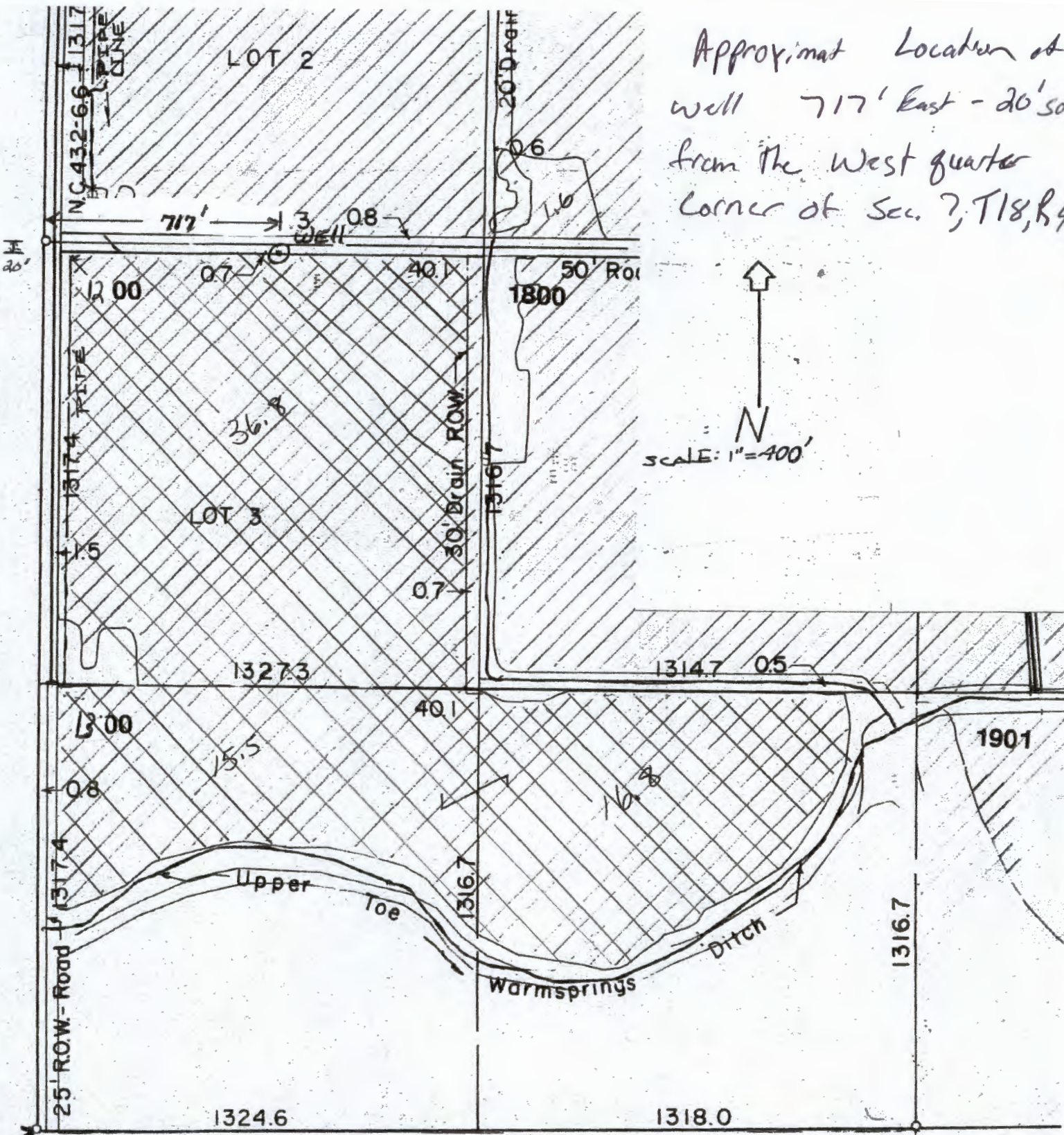


Approximate Location of well 717' East - 20' south from the West quarter corner of Sec. 7, T18, R46



SW corner of - SEC. 7 - T.18S. - R.46E. - W.M.

RECEIVED BY OWRD

REVISED 12-96

FEB 17 2015

G-17799

SALEM, OR

THIS MAP WAS PREPARED FOR ASSESSMENT PURPOSE ONLY

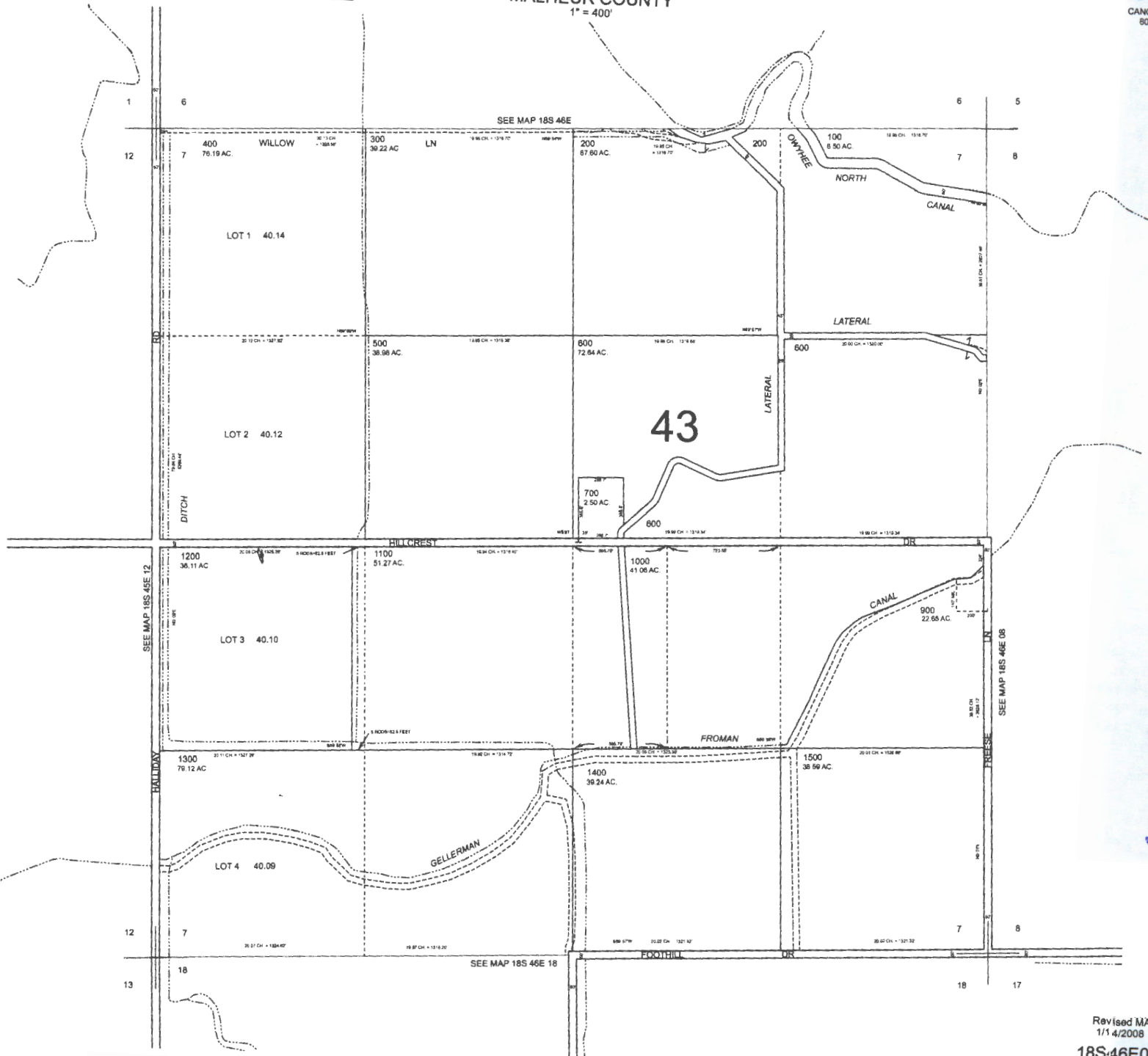
0 200 400 600 Feet

SECTION 7 T.18S. R.46E. W.M.
MALHEUR COUNTY

1" = 400'

18S46E07

CANCELLED:
800



RECEIVED BY OWRD

FEB 17 2015

SALEM, OR

G-1779