
 N
 SCALE: 1" = 400'
 Well location:
 1925 feet south
 1290 feet East
 from northeast
 corner of
 section 13
 T-20, R 45

RECEIVED BY OWRI

JUN 16 2014
 SALEM, OR

RECEIVED BY OWRI
 FEB 23 2015
 SALEM, OR

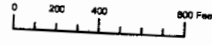
G-17878

G-18005

SEC. 13 - T.20S. - R.45E. - W.M.

4B-102-1478

THIS MAP WAS PREPARED FOR ASSESSMENT PURPOSE ONLY

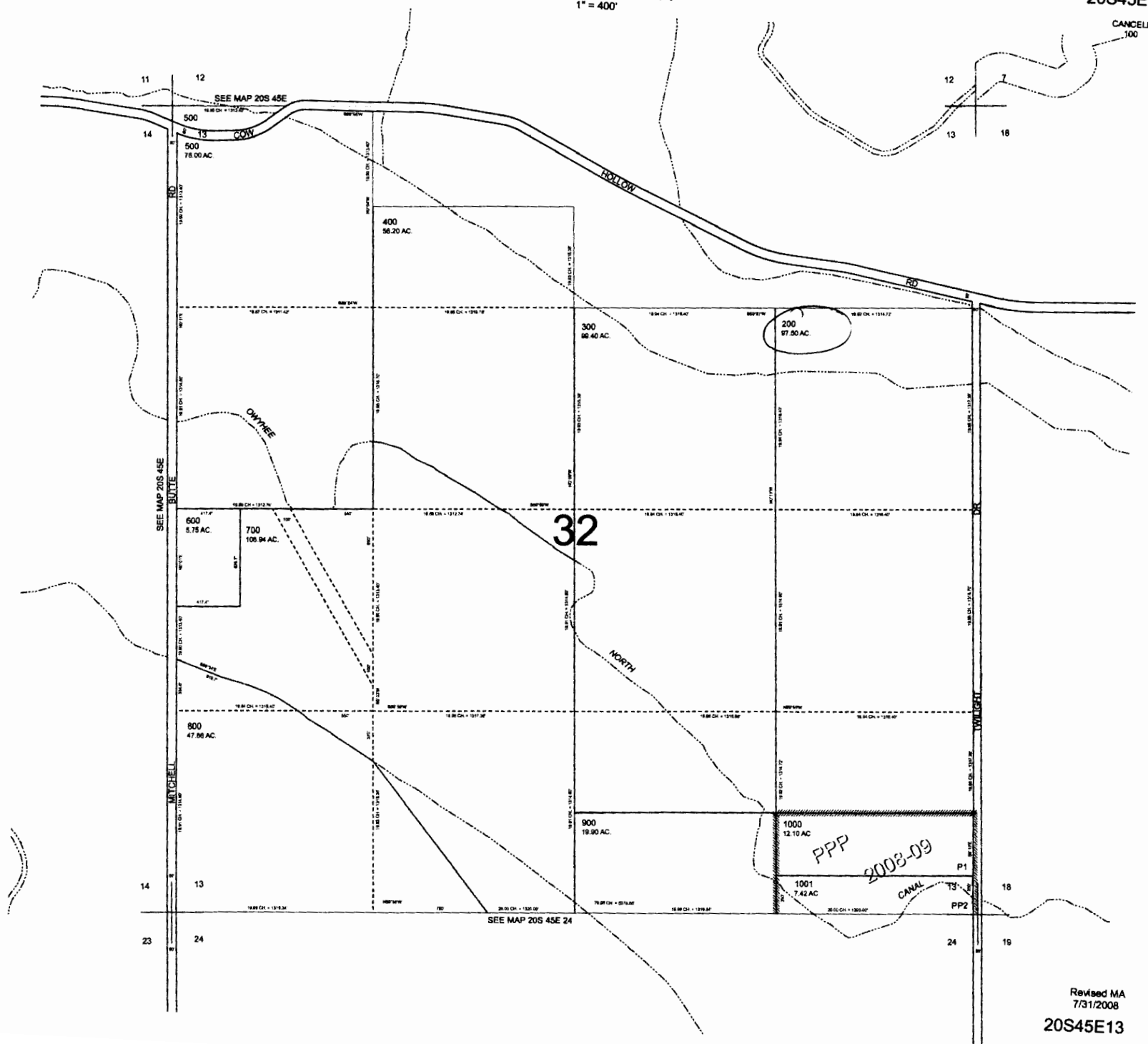


SECTION 13 T.20S. R.45E. W.M.
MALHEUR COUNTY
1" = 400'

20S45E13

CANCELLED:
100

G-1800S



RECEIVED BY OWRD

FEB 23 2015

SALEM, OR