

THIS MAP WAS PREPARED FOR ASSESSMENT PURPOSE ONLY

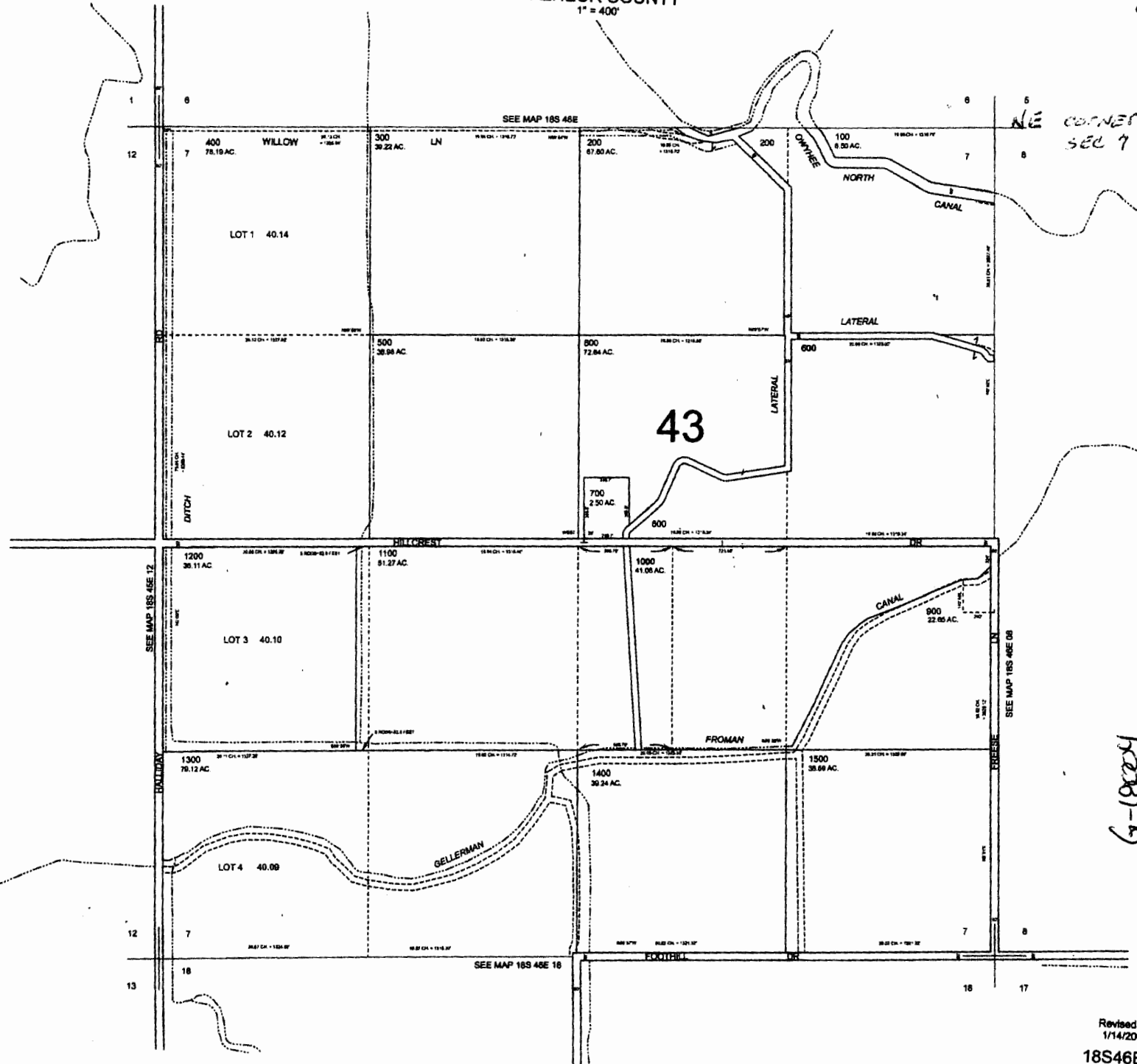
0 200 400 600 Feet

SECTION 7 T.18S. R.46E. W.M.
MALHEUR COUNTY

1" = 400'

18S46E07
CANCELLED:
800

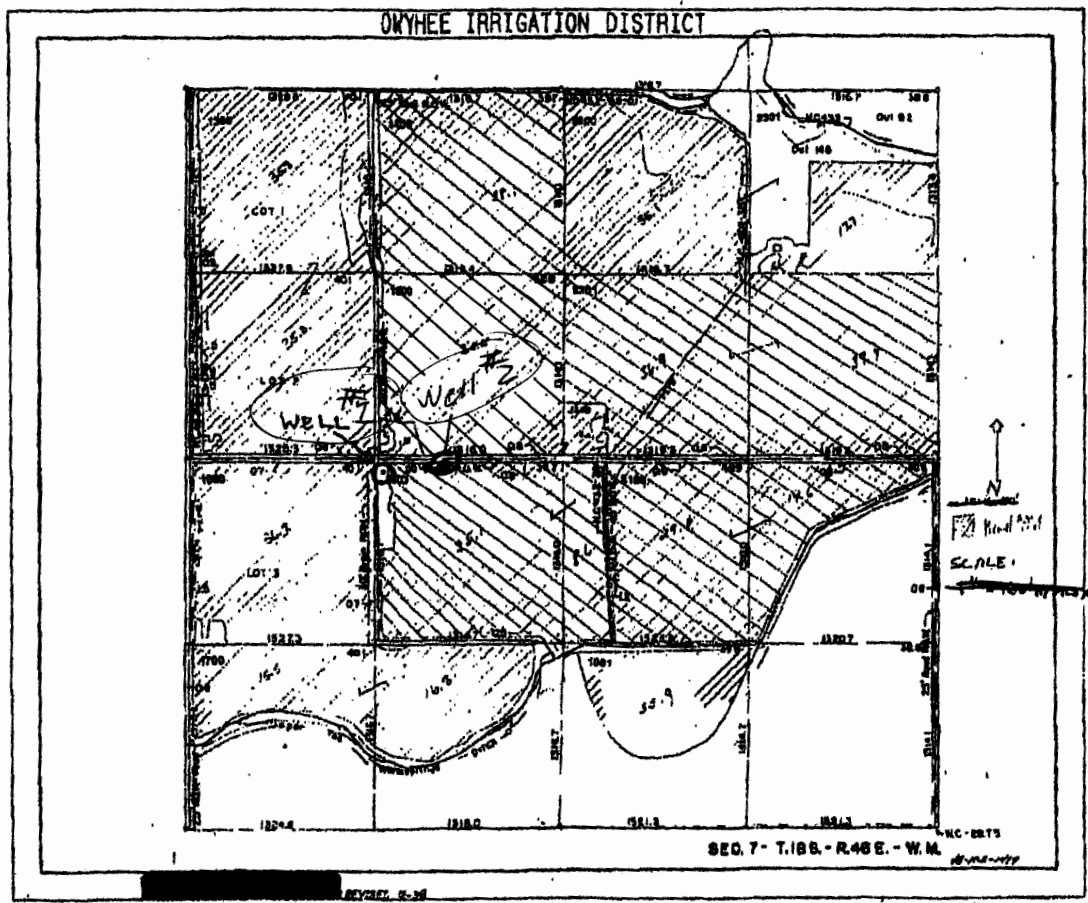
NE CORNER OF
SEC 7



RECEIVED BY OWRD
FEB 23 2015
SALEM, OR

G-188-9

G-18004



WELL #2
 2,535' N & 1,386' E
 from SW corner of
 SEC 7, T-185 R-46E

Should be 46
 E.

MJZ, 3/25/2014

well #2
 well location
 2,605' N & 1,848' E
 from SW corner of
 SEC 7 T-185, R 46E

G-17801

RECEIVED BY OWRD

FEB 23 2015

SALEM, OR

SCALE

1 inch = 1,320 feet Appr.

RECEIVED BY OWRD

MAR 20 2014

SALEM, OR

RECEIVED BY OWRD

MAR 10 2014

SALEM, OR