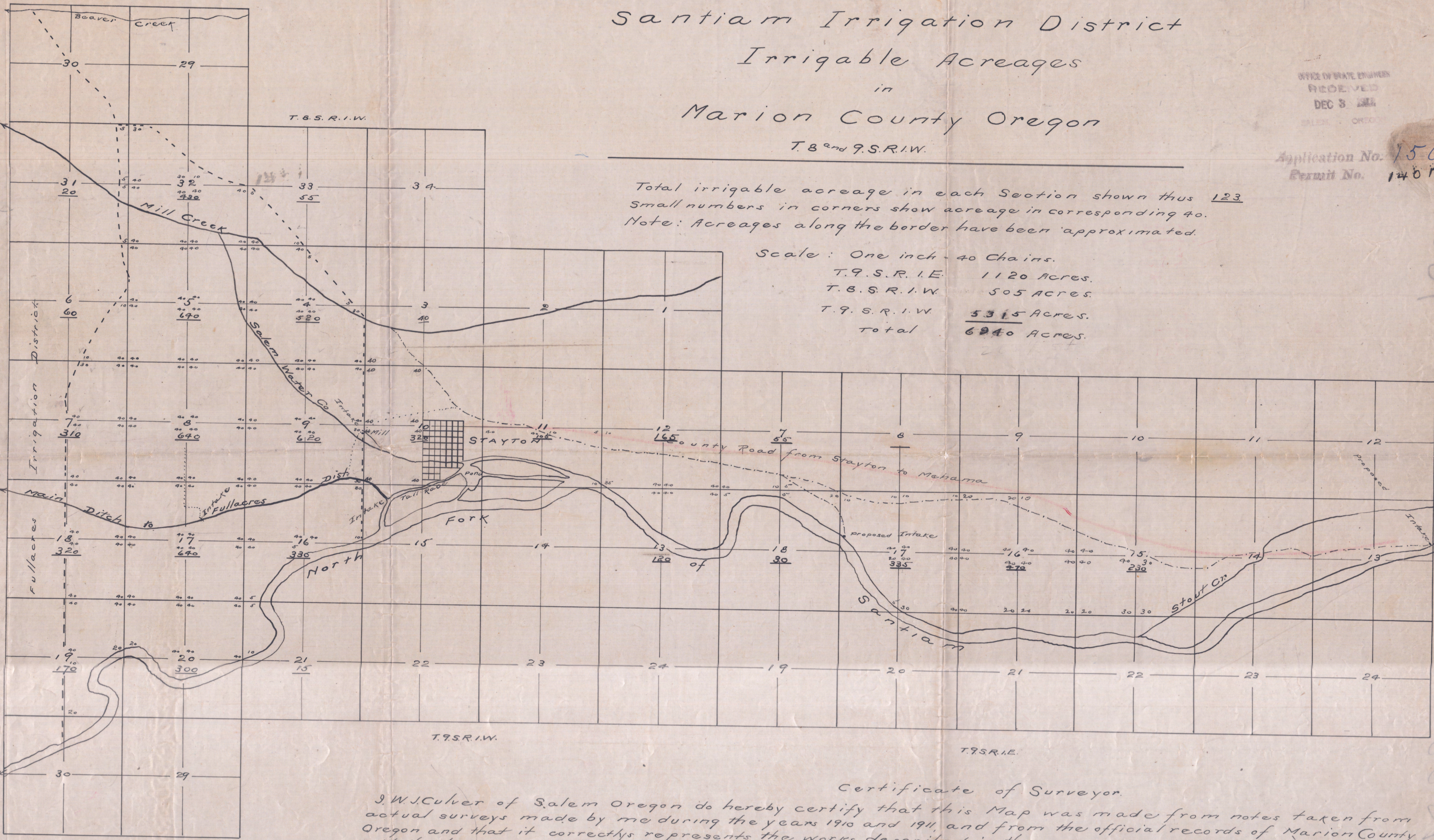


Santiam Irrigation District Irrigable Acreages in Marion County Oregon

OFFICE OF STATE ENGINEER
RECEIVED
DEC 3 1911
SALEM, OREGON

Application No. 150
Permit No. 1401



Total irrigable acreage in each Section shown thus 123
Small numbers in corners show acreage in corresponding 40.
Note: Acreages along the border have been approximated.

Scale: One inch = 40 Chains.
T. 9. S. R. 1. E. 1120 Acres.
T. 8. S. R. 1. W. 505 Acres.
T. 9. S. R. 1. W. 5315 Acres.
Total 6940 Acres.

Certificate of Surveyor.
J. W. Culver of Salem Oregon do hereby certify that this Map was made from notes taken from actual surveys made by me during the years 1910 and 1911, and from the official records of Marion County Oregon and that it correctly represents the works described in the accompanying application, together with the location of streams and other ditches in the immediate vicinity
W. J. Culver.

1208

1208