

Platt Farms, LLC

RECEIVED

MAR 6 2015



1" = 1320'

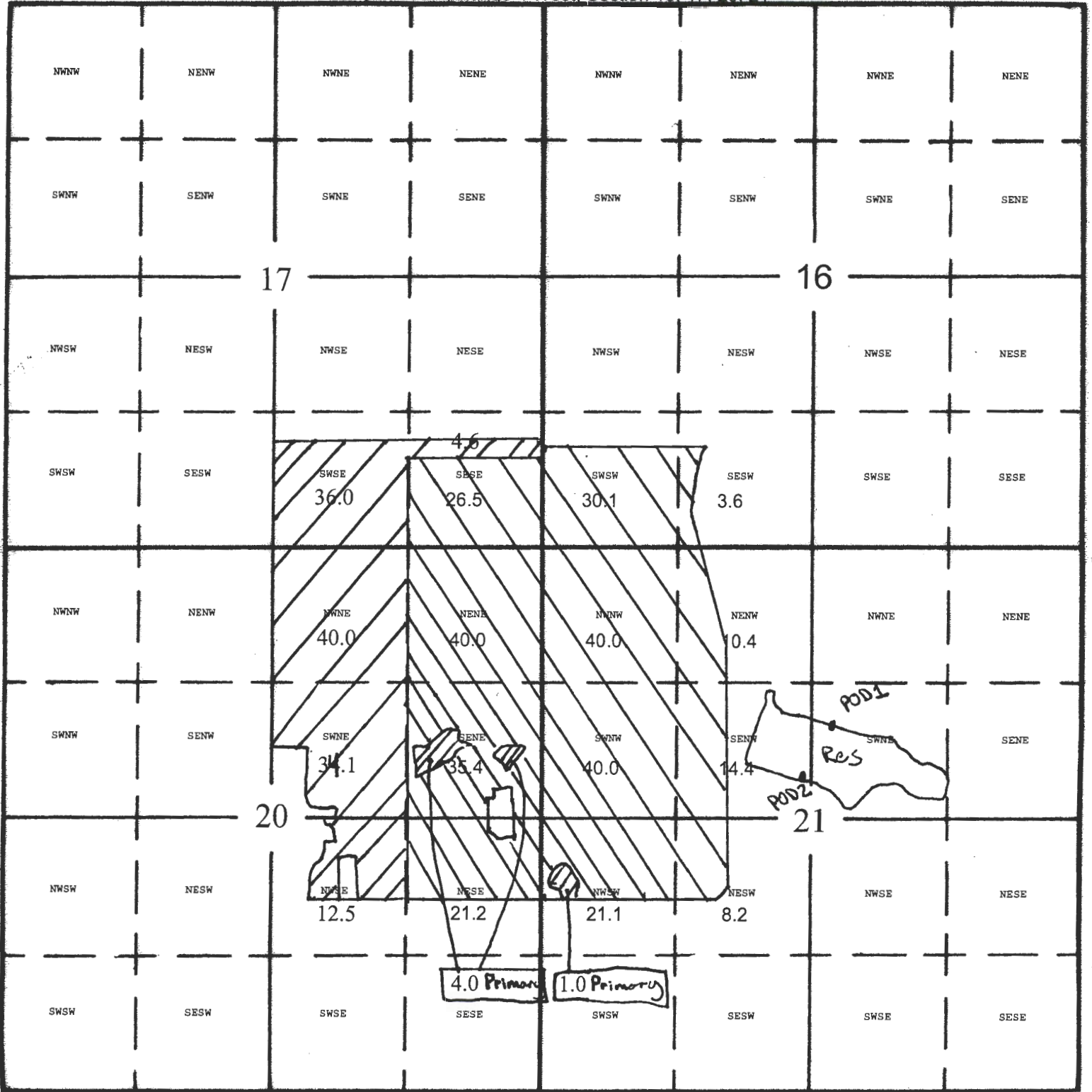
Tax Lot:

200, 300, 100, 800, 900

WATER RESOURCES DEPT

SALEM, OREGON

Township 9 South, Range 4 West, Section 16, 17, 20, 21



South

Jack Platt 2-28-15

Point of Diversion 1: 1660 feet south and 2850 feet east from NW Corner Section 21

Point of Diversion 2: 2190 feet south and 2585 feet east from NW Corner Section 21

S-88055

IMPORTANT
This Map for Assessment
and Taxation Purposes
ONLY

SEC.17 T9S R4W WM
POLK COUNTY

Scale 1" = 400'

See Map 9.4.8

9.4.17

5-8885

Canceled No.
1000

13-8

13-5

See Map 9.4.18

WATER RESOURCES DEPT
SALEM, OREGON

MAR 6 2015

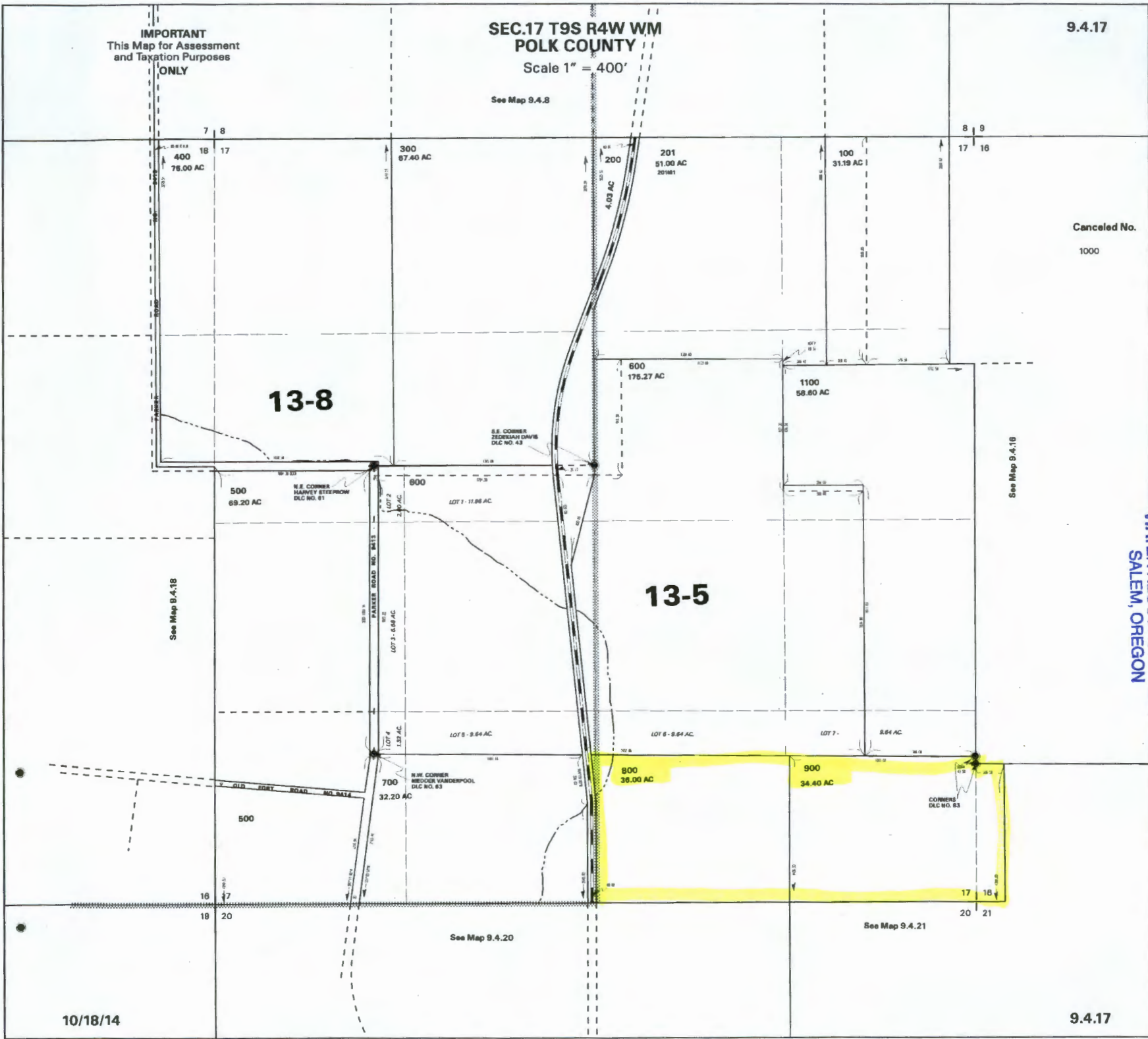
RECEIVED

10/18/14

See Map 9.4.20

See Map 9.4.21

9.4.17



IMPORTANT
This Map for Assessment
and Taxation Purposes
ONLY

**SEC.20 T9S R4W WM
POLK COUNTY**

Scale 1" = 400'

9.4.20

See Map 9.4.17

18 17

17 18

18 20

20 21

500
22.89 AC

300
62.64 AC

200
103.34 AC

501
1.10 AC

SE CORNER
HARVEY STEEPHOM
DLC NO. 61

400
1.28 AC

LOT 1 - 3.37 AC

600
68.30 AC

700
36.77 AC

W.E. CORNER
DLC NO. 44

See Map 9.4.18

LOT 2 - 22.36 AC

LOT 3

801
15.12 AC

SW CORNER
BEEKER VANDERPOOL
DLC NO. 63

800
4.00 AC

901
6.51 AC

1200
7.70 AC

1000

1100

1500
0.08 AC

1300
69.21 AC

SW CORNER
HARRISON LINVILLE
DLC NO. 46

1400
126.31 AC

S 1/4 SE CORNER
JOSEPH W. SIVER
DLC NO. 44

LOT 4 - 12.29 AC

19 20

20 21

30 29

29 28

See Map 9.4.30

See Map 9.4.29

Canceled No.

- 100
- 801
- 802
- 900
- 1301
- 1401
- 1402
- 1403
- 1501

13-5

WATER RESOURCES DEPT
SALEM, OREGON

MAR 6 2015

RECEIVED

10/18/14

9.4.20

J-8888

IMPORTANT
This Map for Assessment
and Taxation Purposes
ONLY

**SEC.21 T9S R4W WM
POLK COUNTY**

9.4.21

Scale 1" = 400'

See Map 9.4.17

See Map 9.4.16

See Map 9.4.20

See Map 9.4.22

Canceled No.

700

13-5

WATER RESOURCES DEPT
SALEM, OREGON

MAR 6 2015

RECEIVED

10/18/14

9.4.21

55088-5

