

SECTION PLAT

RECEIVED BY OWRD

Section 34, 35, 2, 3

Township 33, 34

Range 34

FEB 13 2015

County of Harney

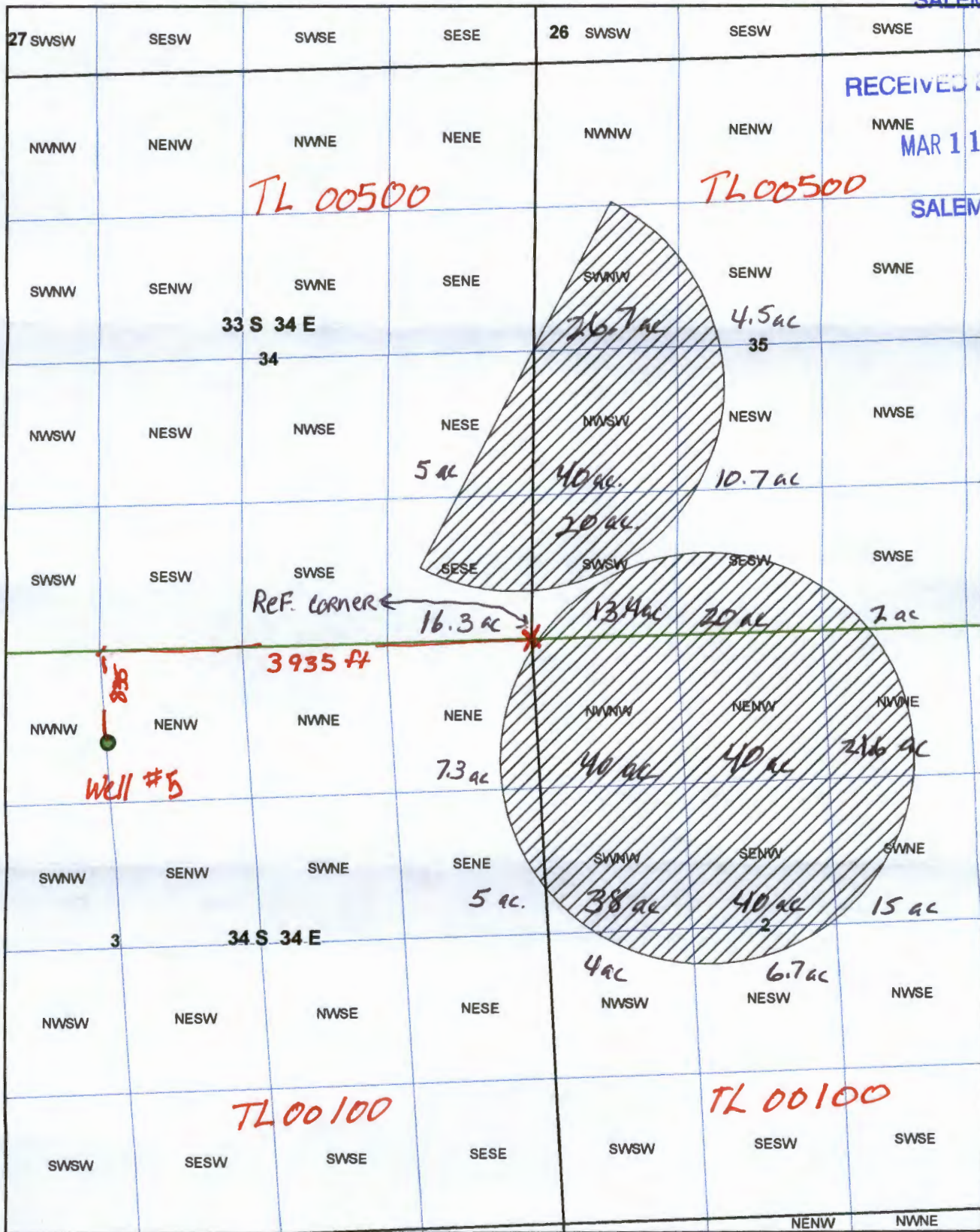
State of Oregon

SALEM, OR

RECEIVED BY OWRD

MAR 11 2015

SALEM, OR



G-18011

4" = 1 Mile

SECTION PLAT

RECEIVED BY OWRD

Section 34, 35, 2, 3

Township 33, 34

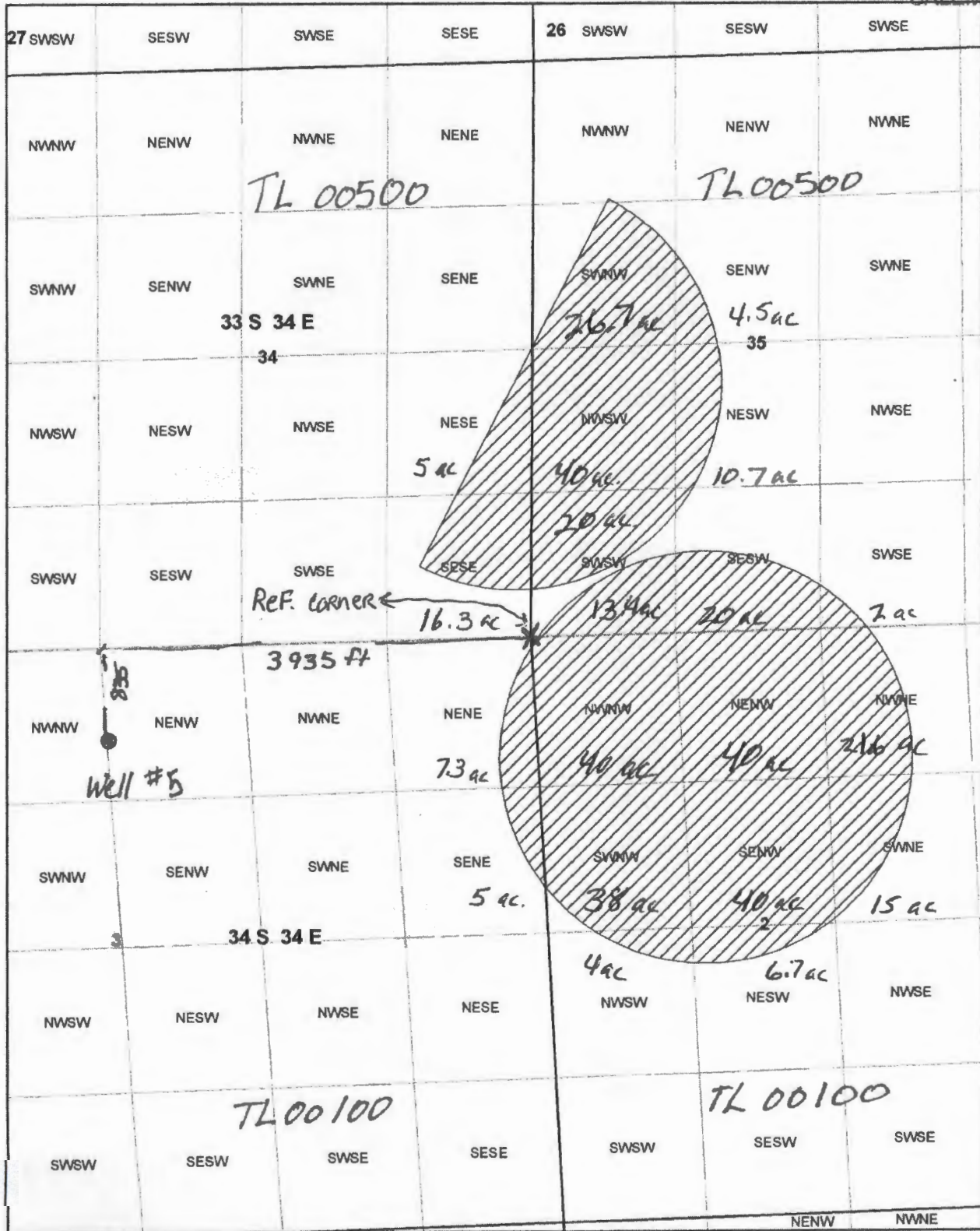
Range 34

County of Harney

State of Oregon

FEB 13 2015

SALEM, OR



G-18001

4" = 1 Mile