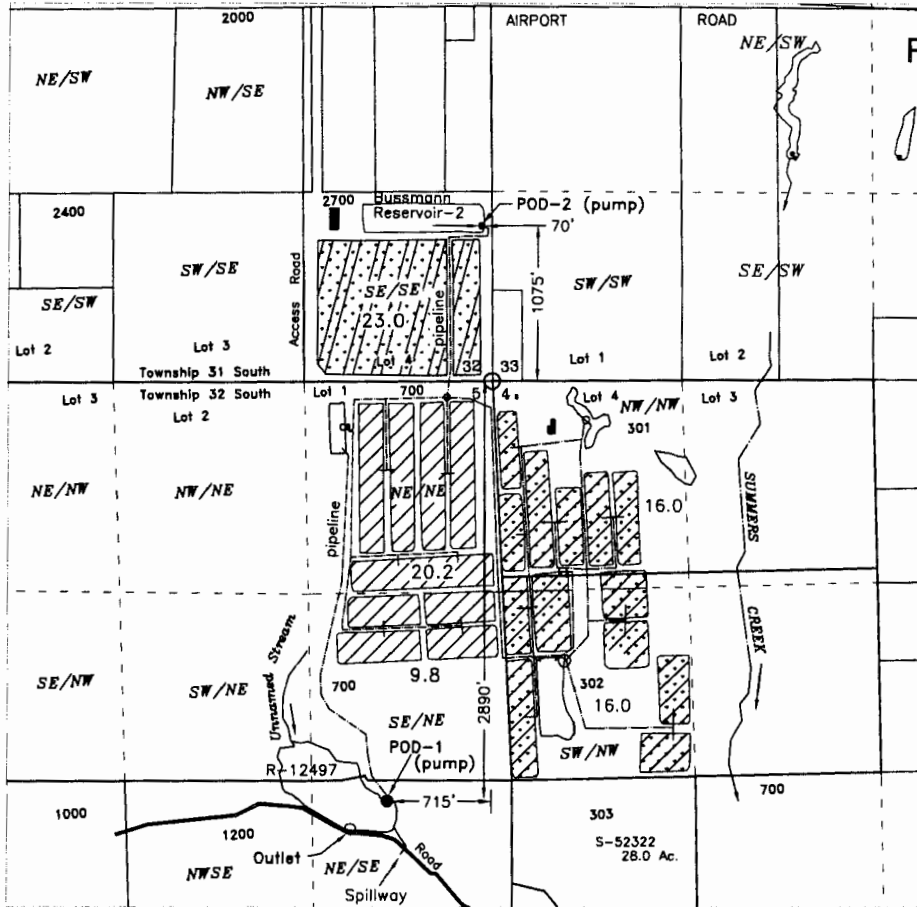


APPLICATION TO STORE & USE WATER

IN THE NAME OF: BUSSMANN CRANBERRIES, LLC

TOWNSHIP 31 & 32 SOUTH, RANGE 15 WEST, W.M.
CURRY COUNTY OREGON



RECEIVED BY OWRD

MAR 11 2015

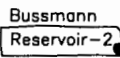
SALEM, OR



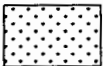
POD-1

Bussmann Reservoir (R-12497)
(Existing)

POD-2



Bussmann Reservoir-2



SUPPLEMENTAL CRANBERRY OPERATIONS
55 ACRES

ALTERNATE REVIEW APPLICATION

STORAGE -100 ACRE- FEET
Filled from runoff including bog runoff



CRANBERRY OPERATIONS - 23 ACRES



SUPPLEMENTAL CRANBERRY OPERATIONS
62 ACRES



Scale

1 inch = 1320 feet



BUSSMANN CRANBERRIES, INC
P.O. BOX 312
SIXES, OR 97476

JORDAN ENGINEERING
460 JORDAN LANE
ROSEBURG, OR 97471
(541) 673-1931

Rev. 1/22/2015 n.e.d.

BASE MAP:

2005 FSA and 8/15/2014 Oregon Map aerial photos
over County GIS tax lots for assumed best fit

This map is not intended to provide
legal dimensions or locations of
property ownership lines

R-88062