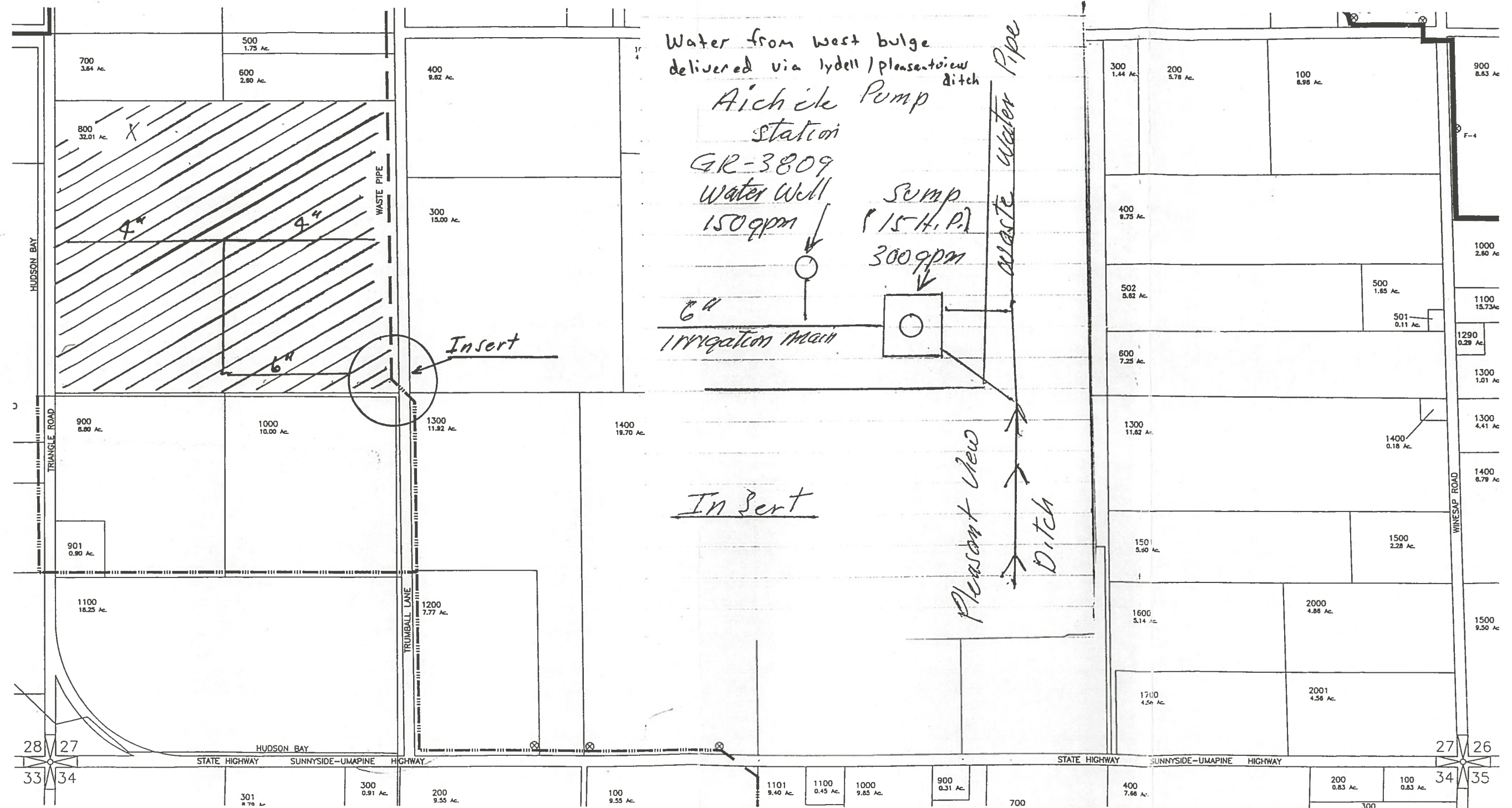
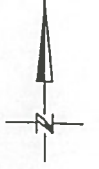


SOUTH 1/2 SECTION 27
TOWNSHIP 6 NORTH, RANGE 35 EAST, W.M.

Application No. 915755
Permit No. 6-15450



RECEIVED
APR 29 2002
WATER RESOURCES DEPT.
SALEM, OREGON



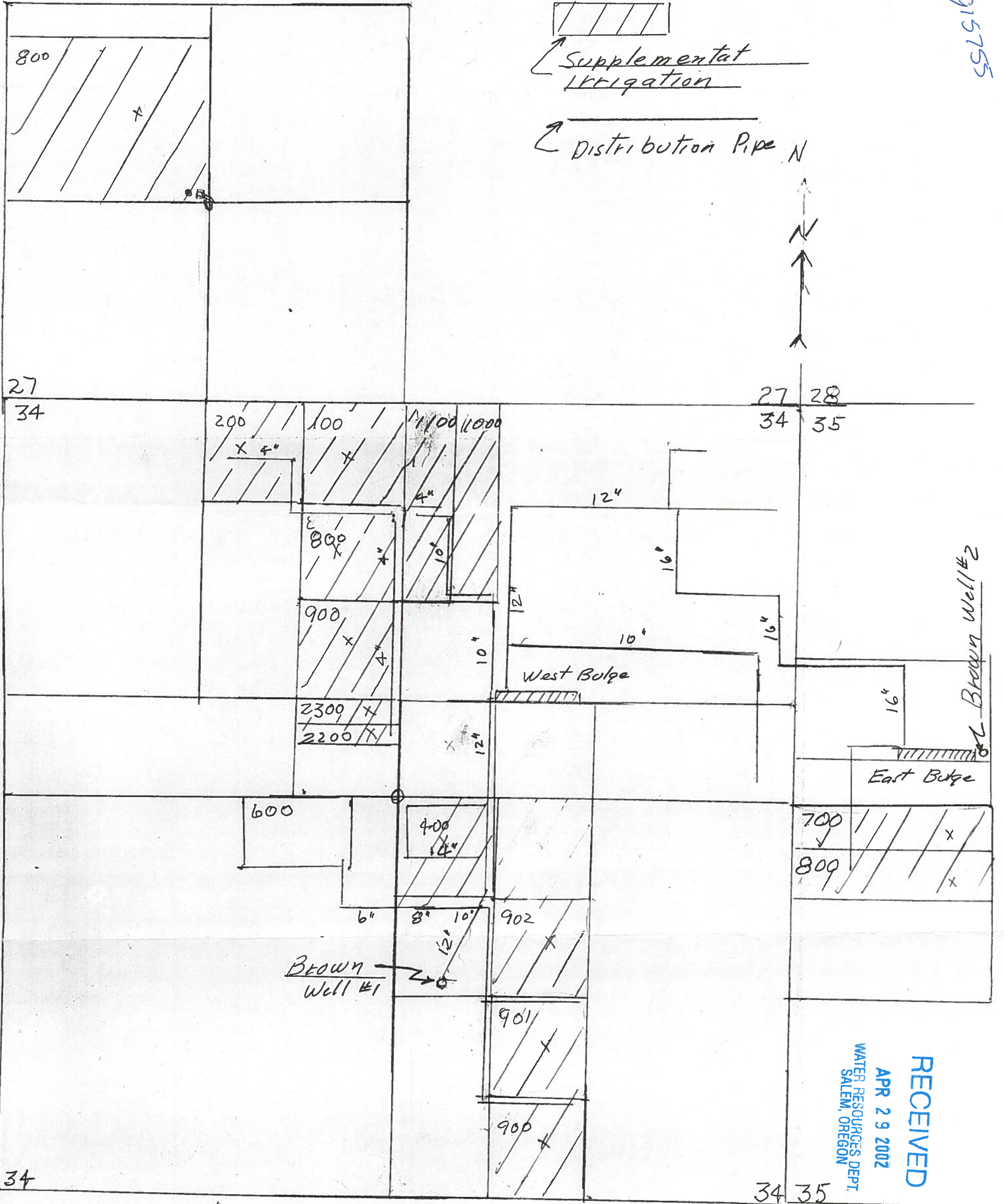
WALLA WALLA RIVER IRRIGATION DISTRICT

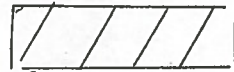

DWG 27S
SCM Consultants, Inc. Architects & Engineers
Kennewick, WA 99336
4376.015 4376-27S.DWG
Drawing!

3.4
12.0
4.0
2.0

T. 6 N. R. 35 E Wm.

Permit No. 915755



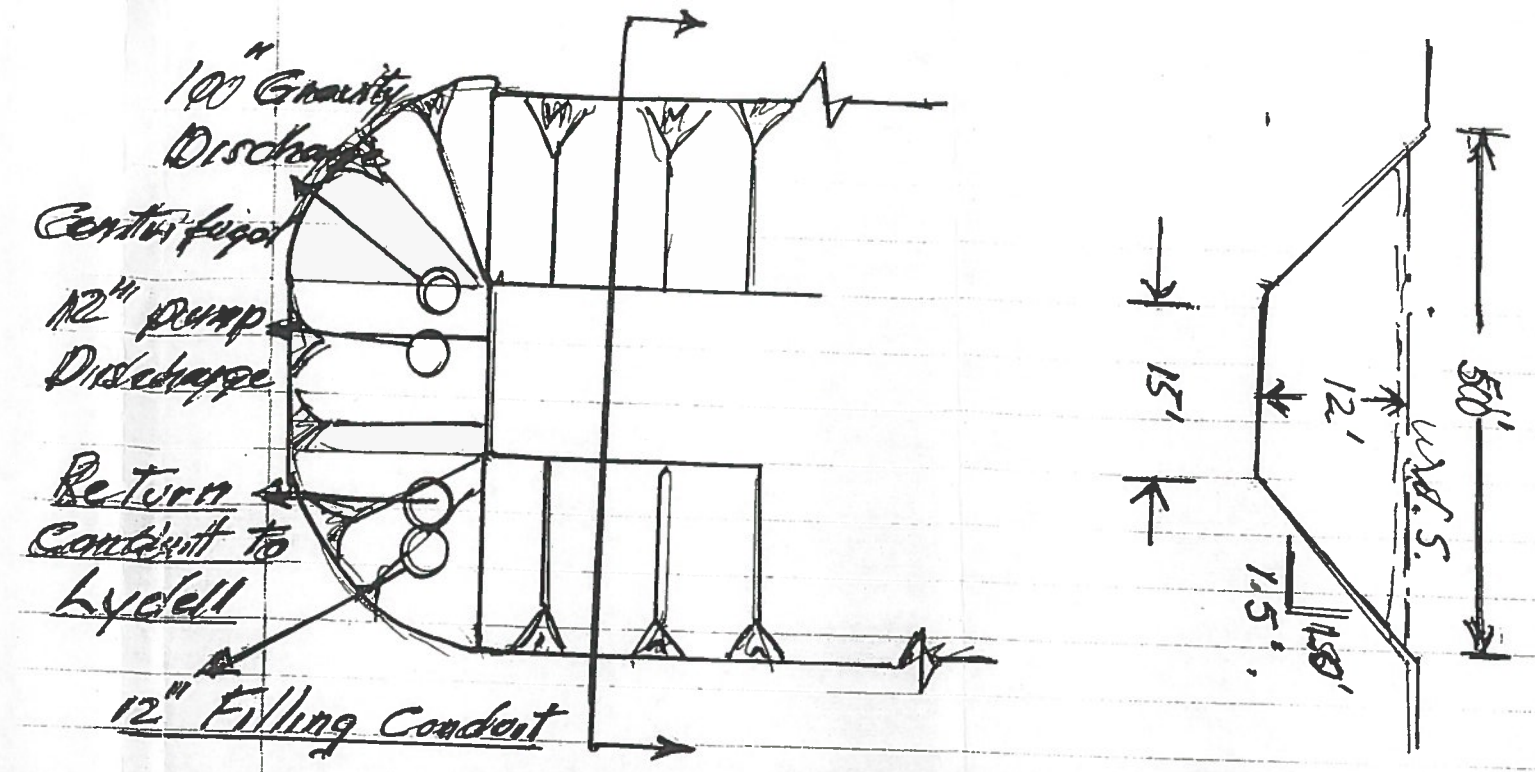
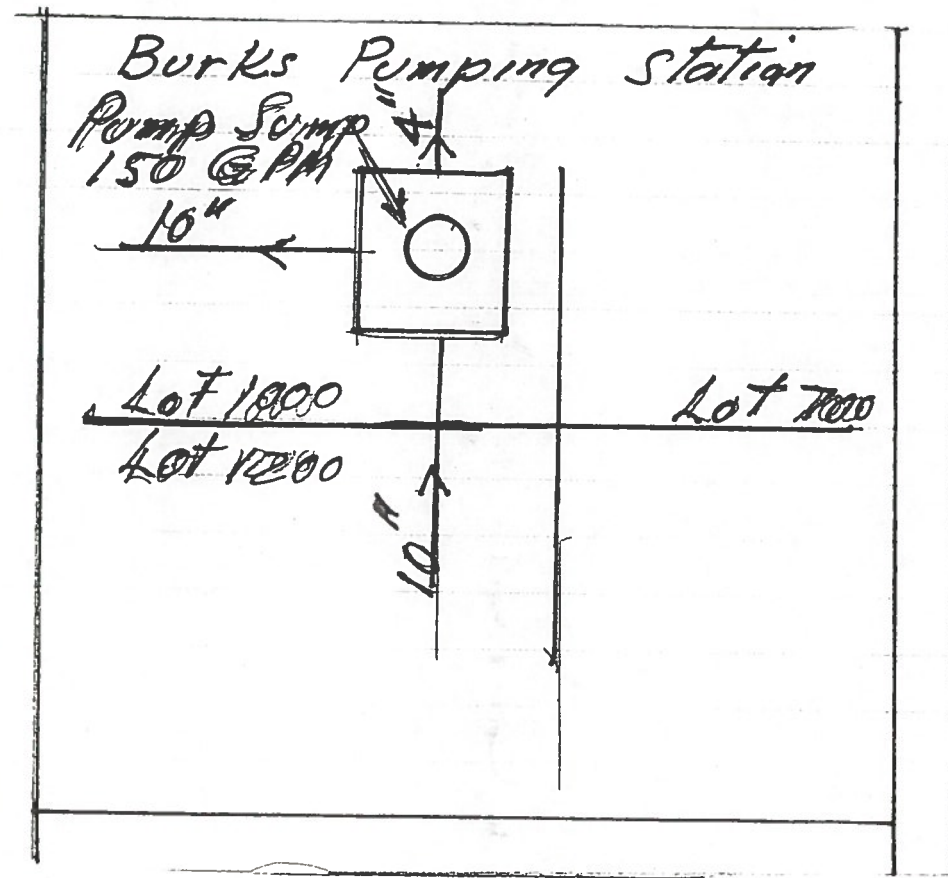
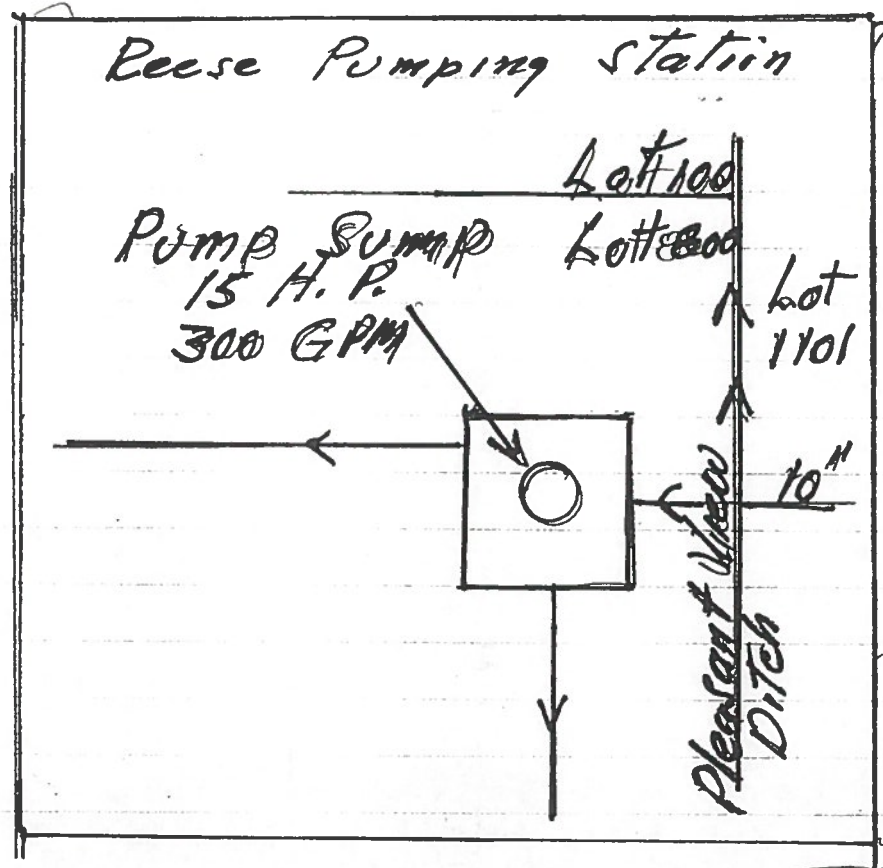
 Supplemental Irrigation
 Distribution Pipe N



2640'
 1" = 660"
 Scale

RECEIVED
 APR 29 2002
 WATER RESOURCES DEPT.
 SALEM, OREGON

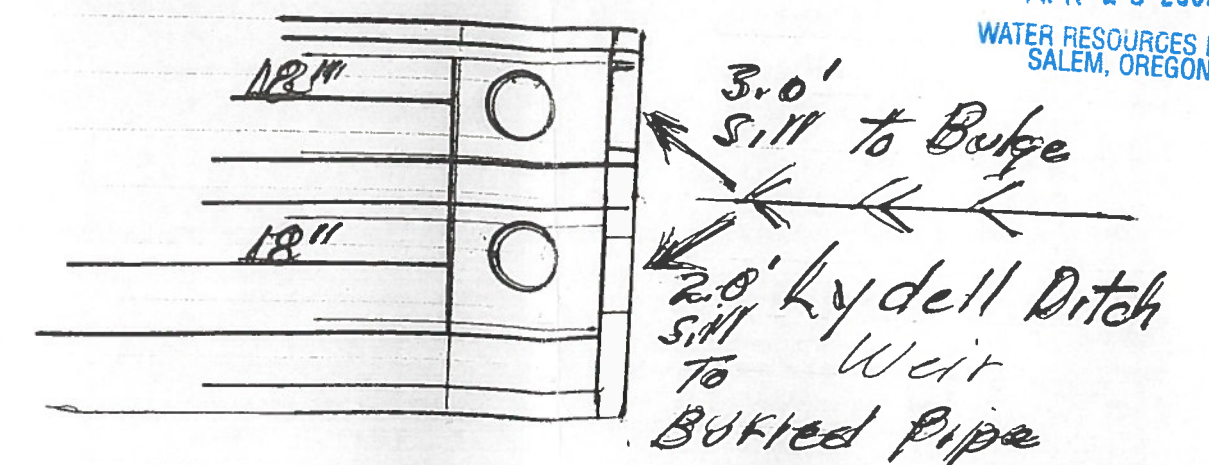
Application No. 915755
Permit No.



West - Reconstructed - Bulge

End Area $17.5' \times 15' \times 12' = 390 \text{ sq ft.}$
 Length 525'
 Volume $390' \times 525' = 204,750 \text{ C.F.}$
 $204,750 \text{ C.F.} \times 7.98 \text{ gal/C.F.} = 1,634,530 \text{ gals.}$
 $1,634,530 \text{ gals.} / 325,828 \text{ gal/C.F.} = 4.7 \text{ acre ft.}$

West Bulge Intake



RECEIVED
APR 29 2002
WATER RESOURCES DEPT.
SALEM, OREGON

T. 6 N. R. 35 E Wm.



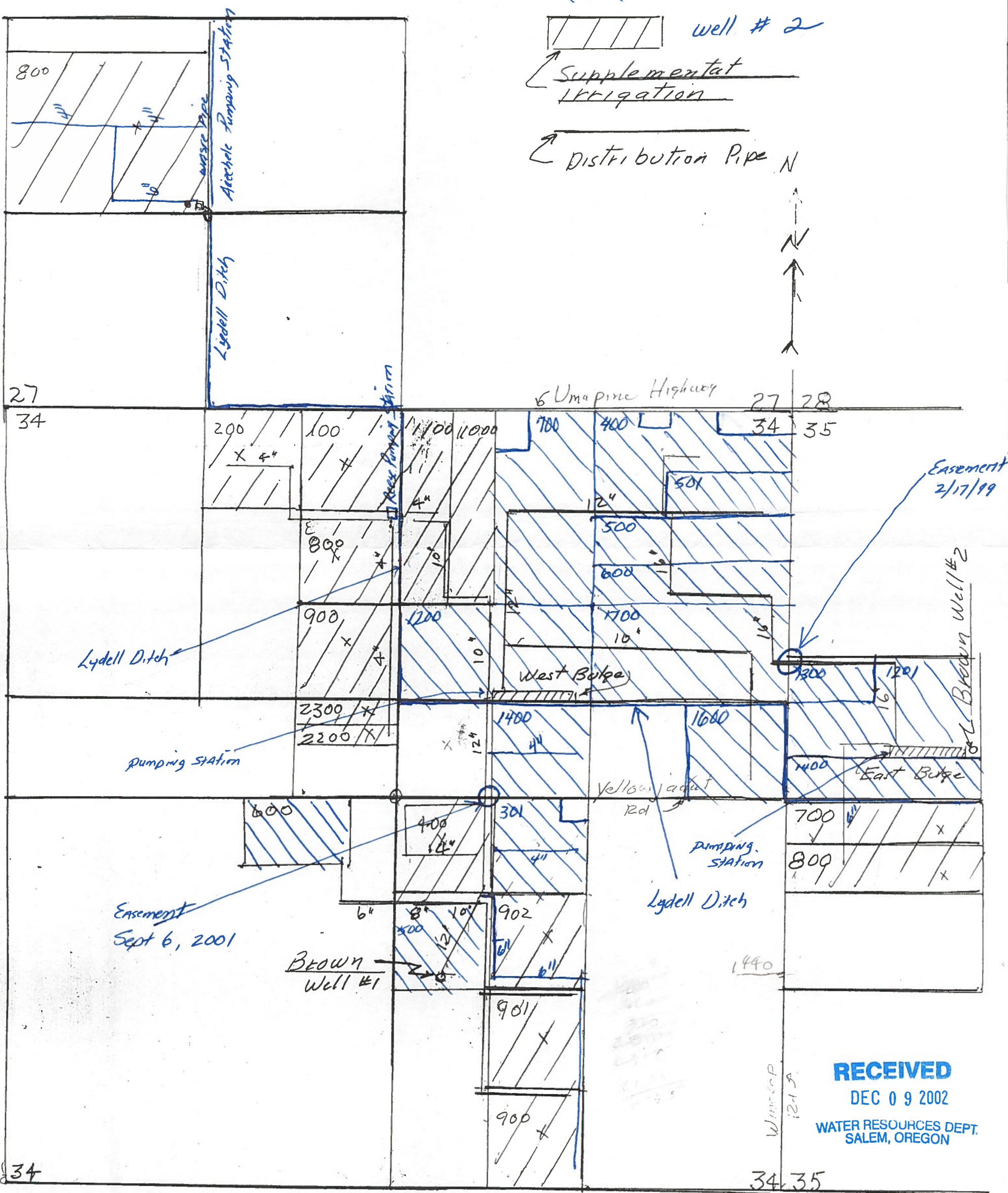
well # 1



well # 2

Supplemental Irrigation

Distribution Pipe N



2640'
1" = 660'
Scale

RECEIVED
DEC 09 2002
WATER RESOURCES DEPT.
SALEM, OREGON