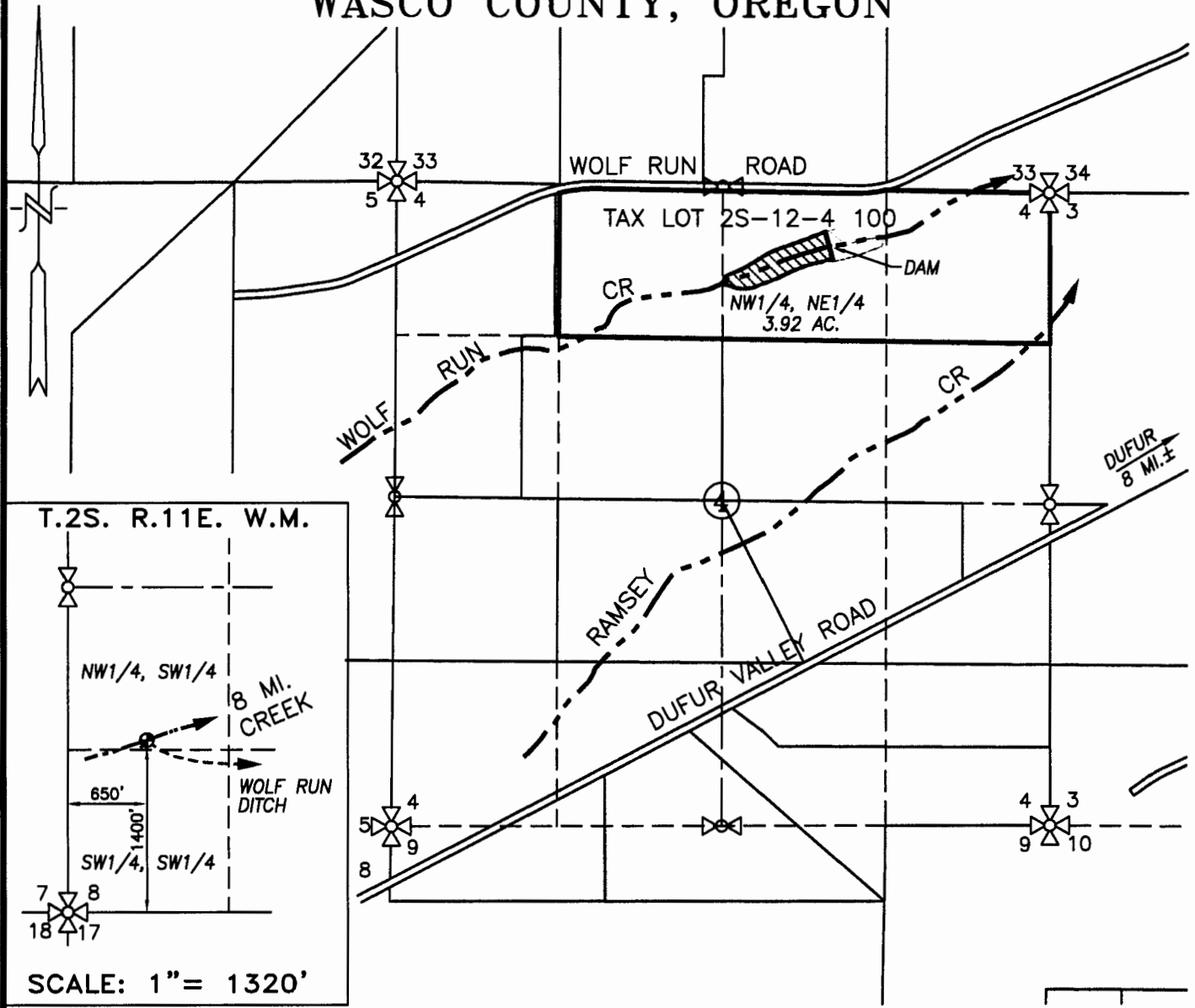


SECTION 4, TWP.2 S. RANGE 12 E. W.M.
 WASCO COUNTY, OREGON



LEGEND :

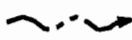
● CENTER EARTH DAM: 522' S. & 3,528' E. OF NW CORNER SECTION 4
 ○ DIVERSION POINT: 648' S. & 3,482' E. OF NW CORNER SECTION 4



RESERVOIR SURFACE AREA = 3.92 ACRES



OVERFLOW DITCH



STREAM WITH DIRECTIONAL FLOW

RECEIVED BY OWRD

APR 09 2015

SALEM, OR

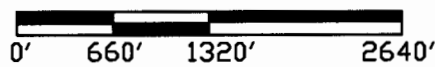
RECEIVED BY OWRD

FEB 27 2015

SALEM, OR

WATER RIGHT APPLICATION MAP

SCALE: 1" = 1320'



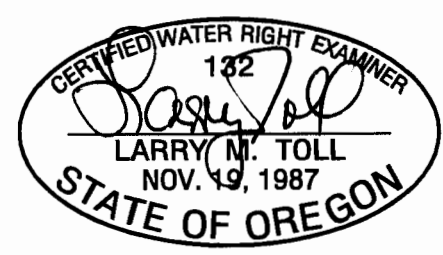
APPLICATION No. _____

PERMIT No. _____

IN THE NAME OF:
 AZURE FARMS

DATE: NOVEMBER 20, 2014

BY: **TENNESON ENGINEERING CORP.**
 3775 CRATES WAY
 THE DALLES, OREGON. 97058
 PH. 541-296-9177
 FAX 541-296-6657



EXPIRES: 06/30/2016

NOTE:

"THIS MAP IS NOT INTENDED TO PROVIDE DIMENSIONS OR LOCATIONS OF PROPERTY OWNERSHIP LINES."

PLOT DATE: 11/20/2014

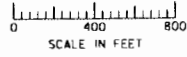
W.O. #10198wr

12-888072

2S 12 4

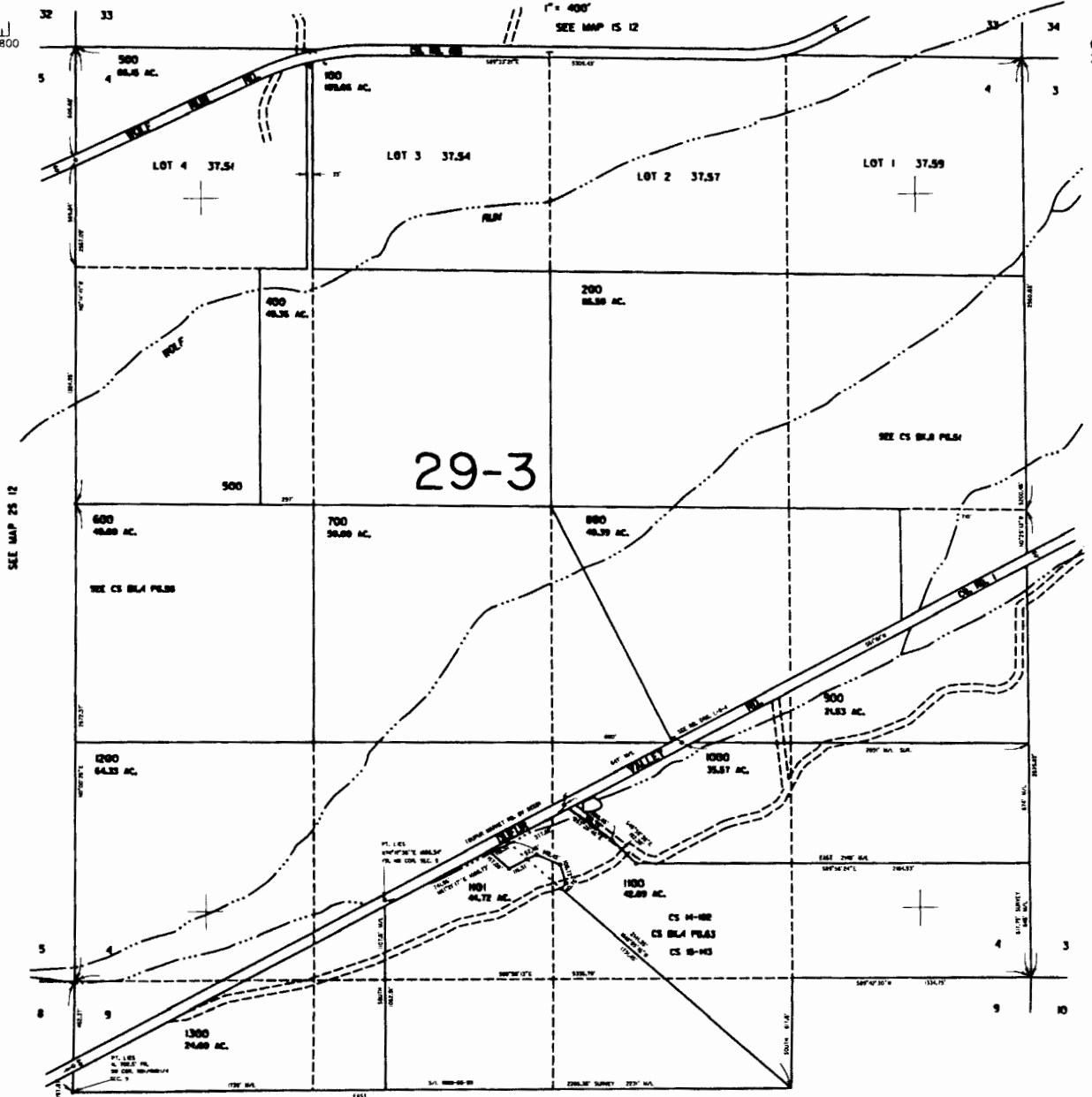
THIS MAP WAS PREPARED FOR ASSESSMENT PURPOSE ONLY

SECTION 4 T.2S. R.12E. W.M. WASCO COUNTY



1" = 400' SEE MAP 15 12

CANCELLED NO. 300



SEE MAP 25 12

SEE MAP 25 12 3

SEE MAP 25 12

640,000

SEE MAP 25 12

Revised 12/11/2008, DBJ 2S 12 4

RECEIVED BY OWRD

APR 09 2015

SALEM, OR

RECEIVED BY OWRD

FEB 27 2015

SALEM, OR

000161

DATE TIME

DATE TIME