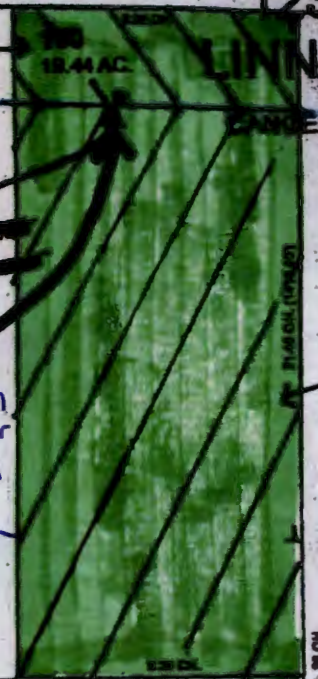


SECTION 6 T.12S. R.4W W.M.  
Linn County  
1" = 400'

77' CHL PER Q.L.D.  
1/4 COR.

2.40 Acres  
T1S R4W  
31 SE SE



Existing Well  
~~10' North and 510' West from SE corner of Section 31~~  
Existing Well  
10' North and 510' West from SE corner of Section 31  
John Nelson

1250

LINN CO

17  
T12  
06

SEE MAP  
12 4W 68A

2000  
83.18 AC.

SEE MAP  
12 4W 6A

701  
14.72 AC.

700  
3.98 AC.

2100  
113.12 AC.

702  
1.02 AC.

2403  
2.83 AC.

2400  
108.84 AC.

N.E.  
JAMI  
ROB  
D.L.C

RECEIVED BY OWRD

MAY 04 2015

SALEM, OR

RECEIVED BY OW

JAN 28 2015

SALEM, OR

OWL  
CREEK

7851-77

6