

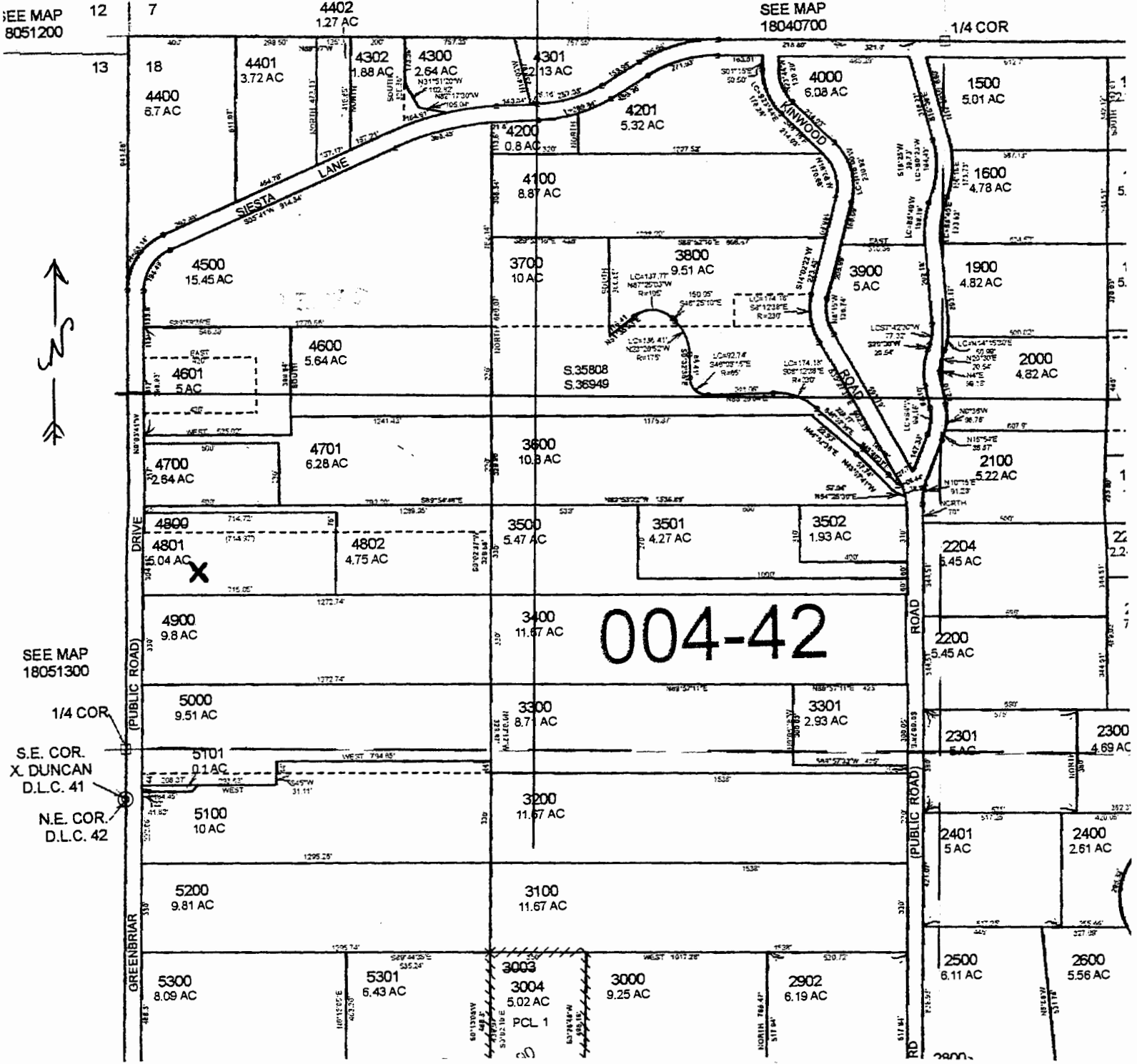
Mundt R.s. App

FOR ASSESSMENT AND TAXATION ONLY

SECTION 18 T.18S. R.4W. W.M.
Lane County

1" = 400' 500'

Pond in SW 1/4 of NW 1/4
TL 4801



SEE MAP 8051200

SEE MAP 18040700

SEE MAP 18051300

1/4 COR.
S.E. COR. X. DUNCAN D.L.C. 41
N.E. COR. D.L.C. 42

004-42

RECEIVED BY OWRD

RECEIVED

pond will be 1,900 ft. South and 200 ft East of NW cor. Sec 18

APR 23 2015

MAY 05 2015

SALEM, OR

OWRD

R-88078