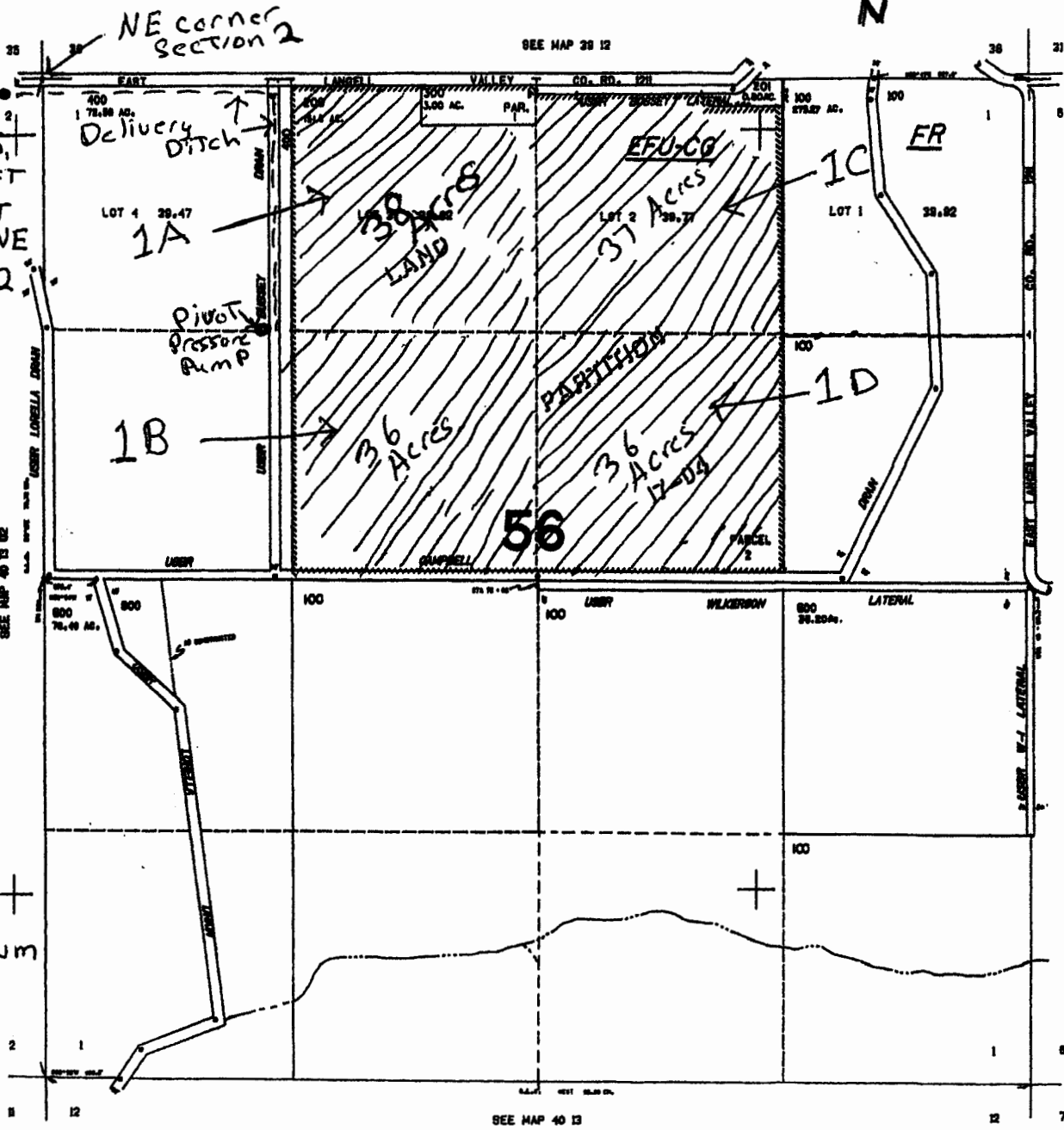
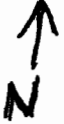


THIS MAP WAS PREPARED FOR ASSESSMENT PURPOSE ONLY

SECTION 01 T.40S. R.13E. W.M. KLAMATH COUNTY

40 13 01

1"=400'



Smith well
NE 1/4 NE 1/4
Section 2, T40S,
R 13 E Wm, 40 FT
South and 275 FT
West From The NE
Corner of Section 2.

1A
NE 1/4 NW 1/4
Section 1

1B
SE 1/4 NW 1/4
Section 1

1C
NW 1/4 NE 1/4
Section 1

1D
SW 1/4 NE 1/4
Section 1

All are in +
T40S R13E Wm
Section 1 Tax
Lot 200

SEE MAP 40 14 6

40 13 01

RECEIVED BY OWRD
MAY 18 2015
SALEM, OR

G-12000