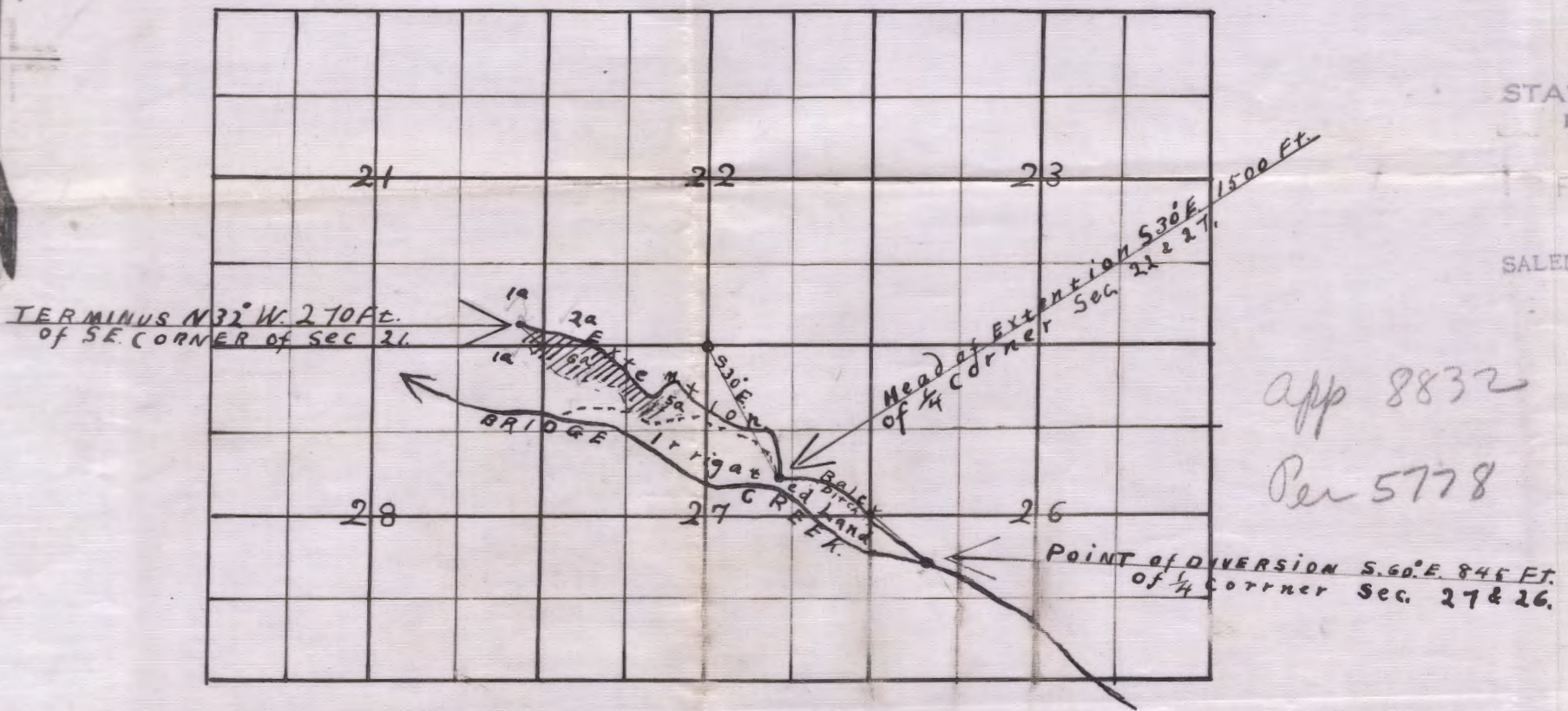
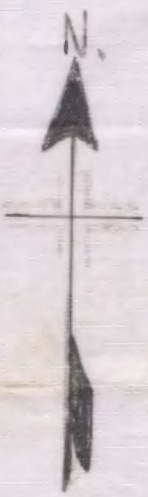


LLJONES DITCH EXTENTION OF BAILEY DITCH.
TOWNSHIP 11. SOUTH, RANGE 21. EAST. W.M.



Scale 2 in = 1 mi.

STATE ENGINEER
 RECEIVED
 FEB 13 1923
 SALEM, OREGON

app 8832
 Per 5778

Application No. 8832
 Permit No. 5778