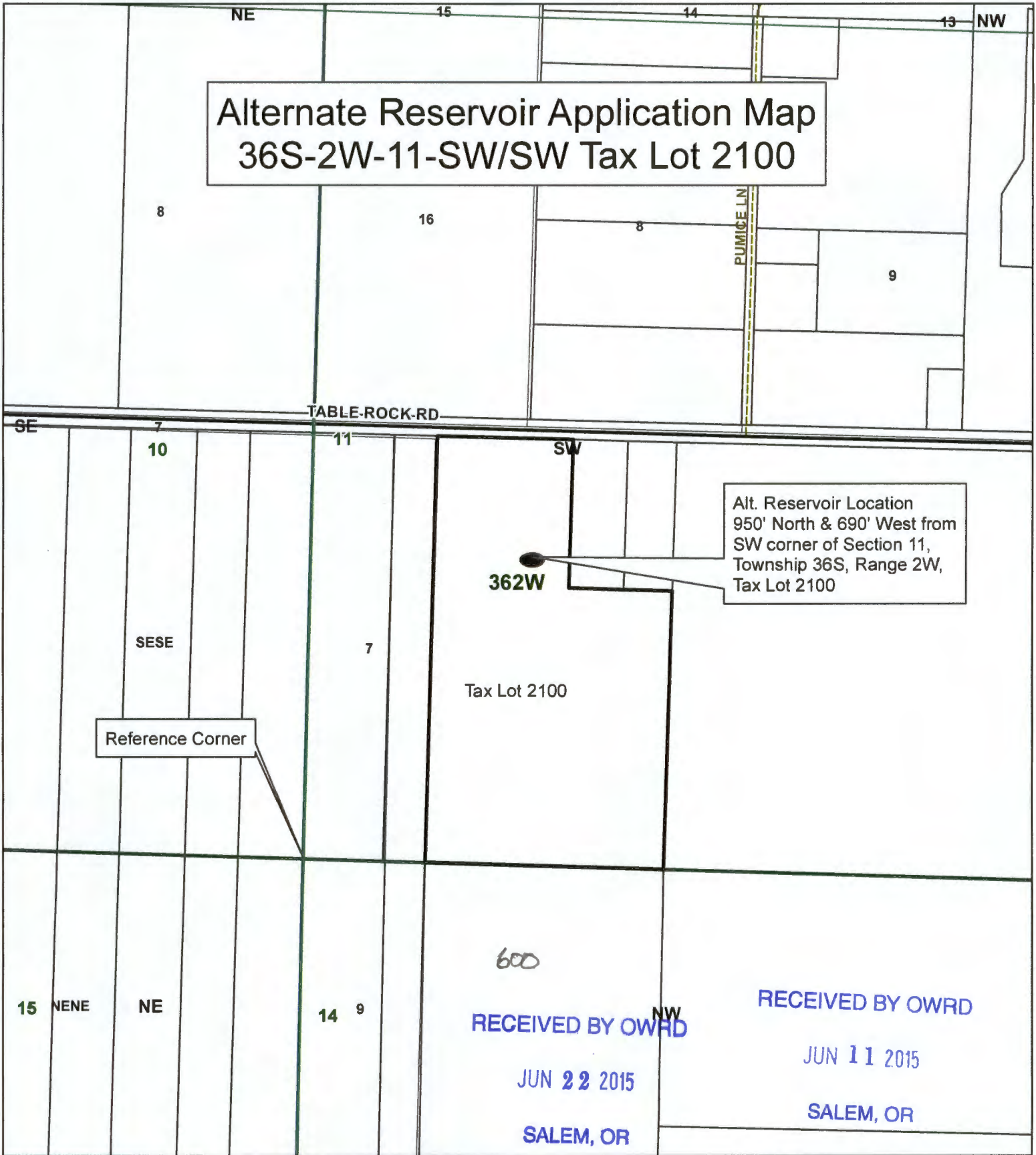


Alternate Reservoir Application Map 36S-2W-11-SW/SW Tax Lot 2100



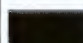






Alt. Reservoir Location
950' North & 690' West from
SW corner of Section 11,
Township 36S, Range 2W,
Tax Lot 2100

Reference Corner

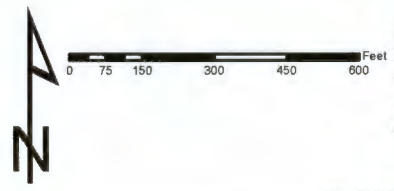
RECEIVED BY OWRD
JUN 22 2015
SALEM, OR

RECEIVED BY OWRD
JUN 11 2015
SALEM, OR

Legend

-  Alt. Reservoir
-  Sections
-  Taxlot 2100
-  Quarter Sections
-  Taxlots
-  Quarter Quarter Sections
-  Townships

1 inch = 400 feet



JACKSON COUNTY
WATERMASTER

Prepared by Travis Kelly

This map is based on a digital database compiled by Jackson County from a variety of sources. Jackson County cannot accept responsibility for errors, omissions, or positional accuracy. There are no warranties, expressed or implied.

R-88101