

T 20 S, R 3 W Sec 14  
NE 1/4, NW 1/4

TAX MAP LOT 20 03 110000 500  
& 503

Pond outlet is 130 ft. south  
and 2,330 ft West from  
SE Cor DLC 48 in Sec. 11

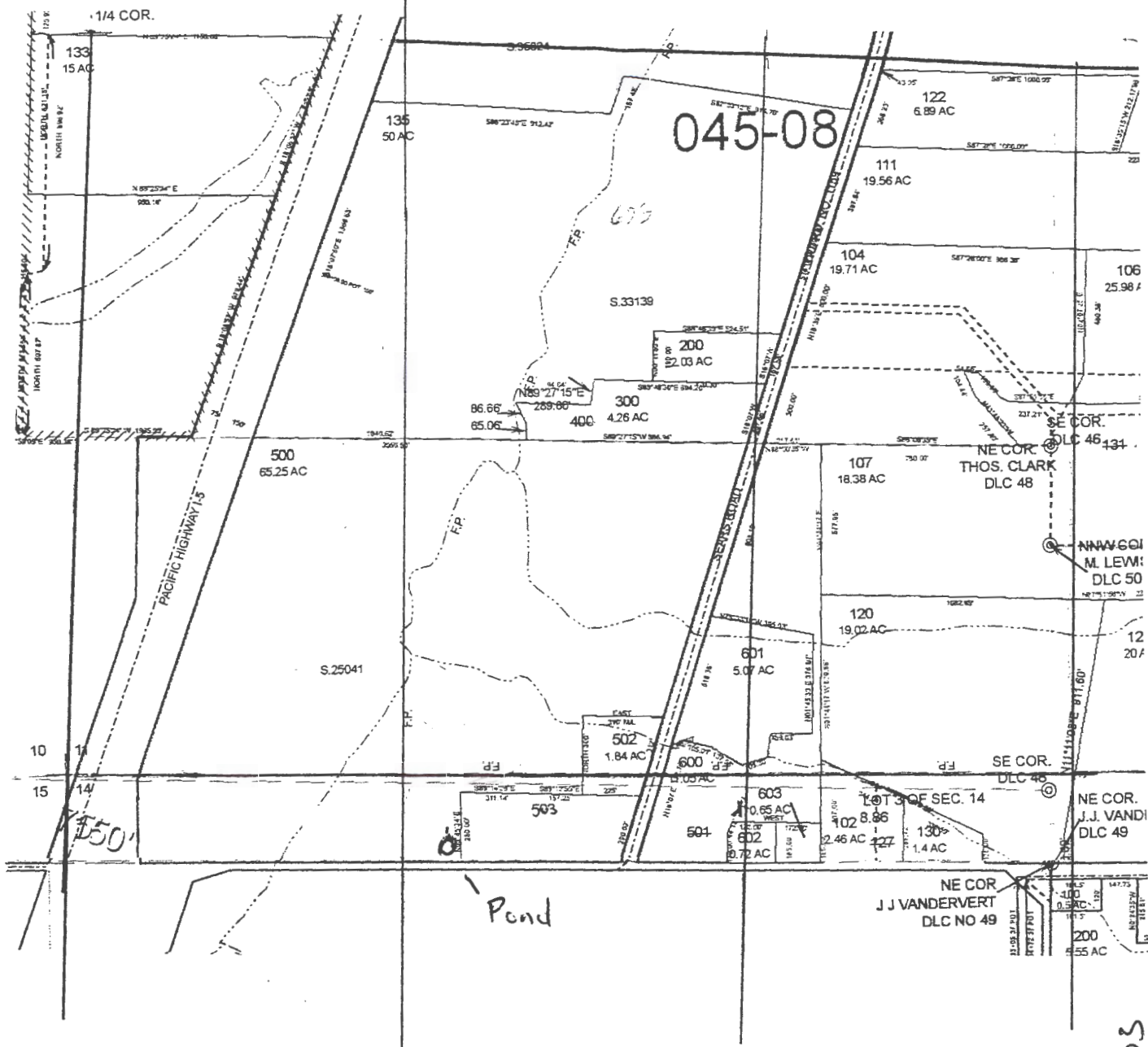
Travis Harrold



RECEIVED BY OWRD

JUN 09 2015

SALEM, OR



R-00103



Oregon Water Resources Department  
Water Rights Mapping Tool

[User Guide](#)

[OWRD Only](#)

725 Summer St NE, Sal

Search

Identify Non-Water Right Features

Tax Lots

Tools

Layers

Print

There's a bug!

At the moment, the ESRI print function does not work with internal web services, which in our case is the taxlots. If you would like to print a map, please use the public version.

*for illustration only*

*NOT to Scale*

Bookmarks



*R-00103*

RECEIVED BY OWRD

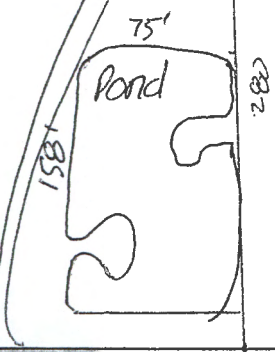
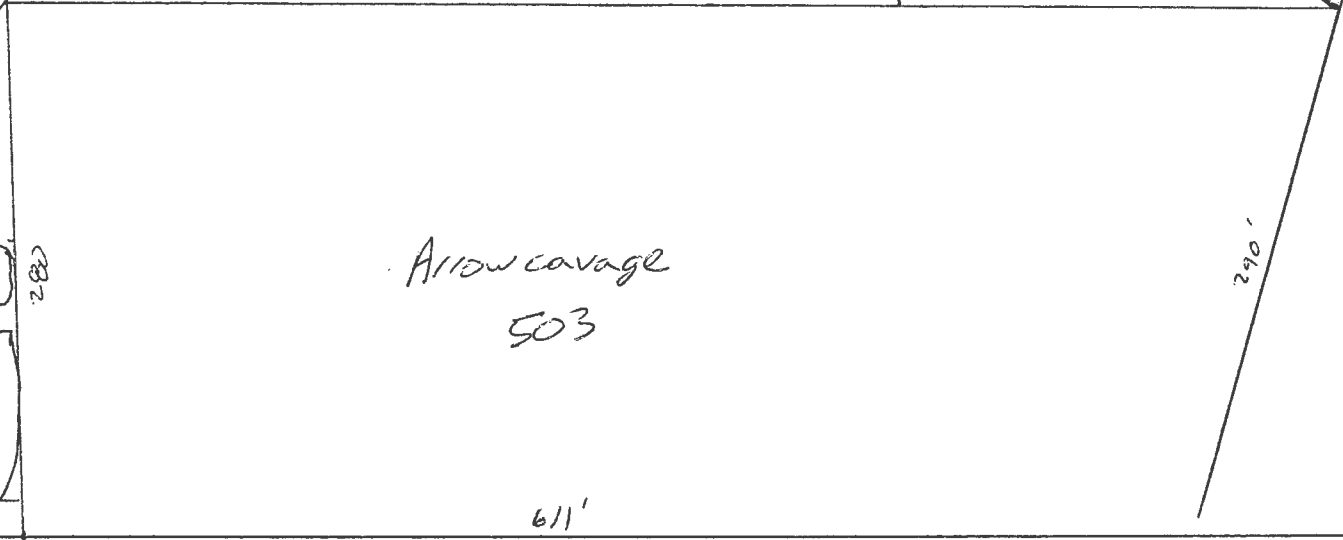
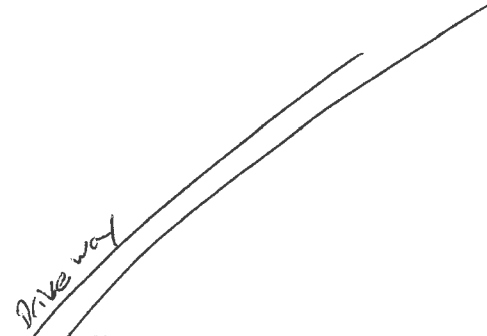
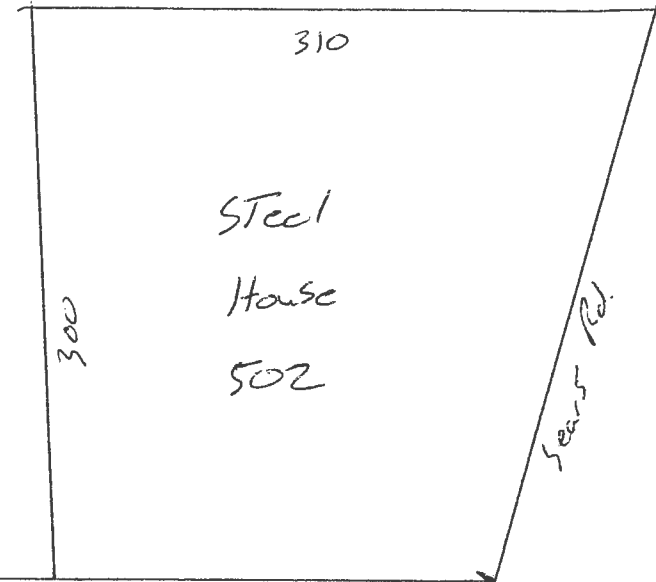
JUN 09 2015

SALEM, OR

Scale 1" = 100'



Harrold  
500



Sears Rd.

R-OOLAS

Sears Rd.

RECEIVED BY OWRD

JUN 09 2015

SALEM, OR