

G-1815

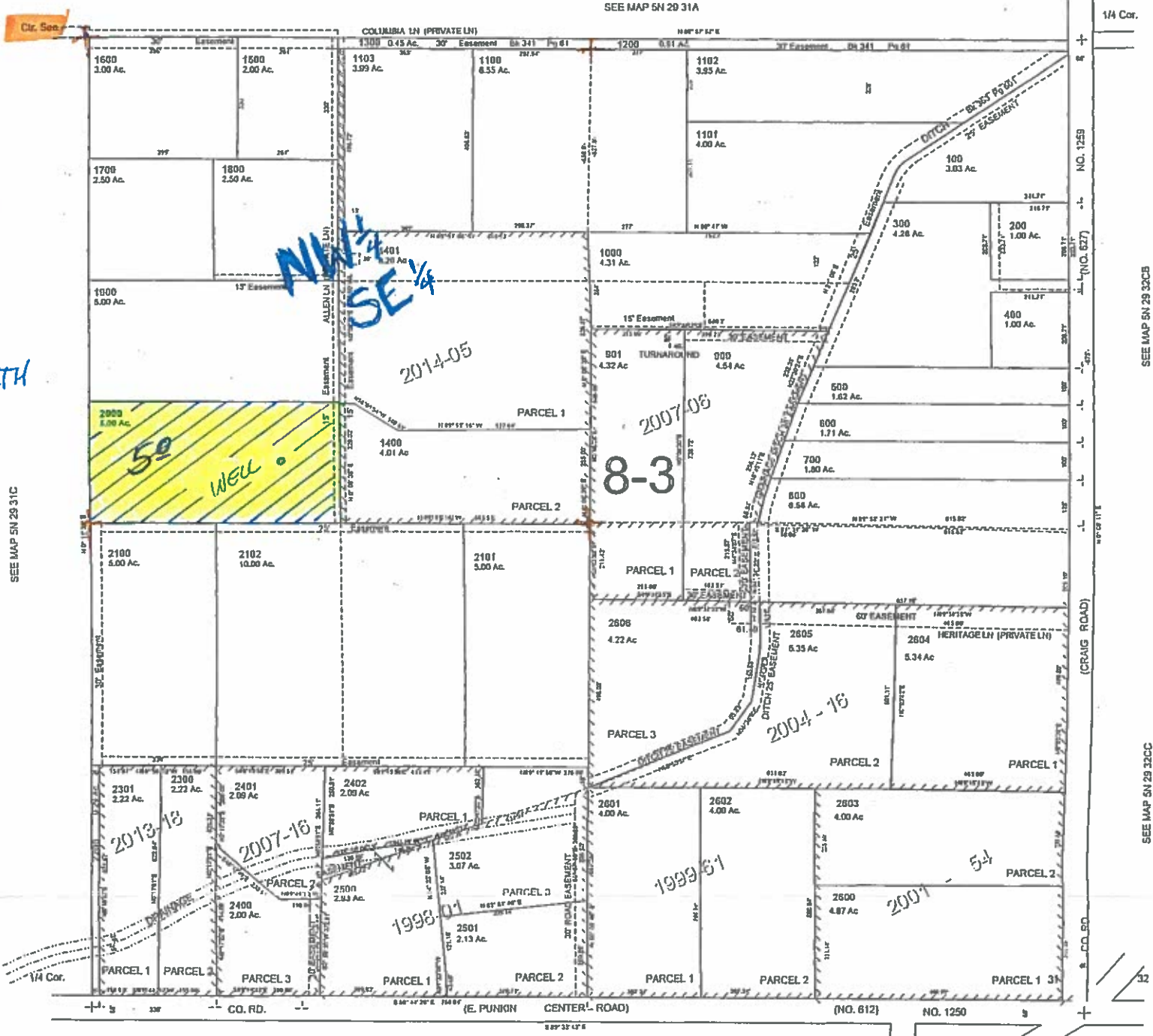
This map was prepared for Assessment & Taxation purposes only and was NOT prepared nor is it suitable for legal, engineering or surveying purposes.



SE 1/4 SEC 31 T5N R29E WM
UMATILLA COUNTY

SCALE: 1" = 200'
400'

5N2931
AERIAL PHOTO NO. IF



RECEIVED BY OWRD

JUL 01 2015

SALEM, OR

Revised: 7/02/14

5N2931D

WELL IS LOCATED: 1170 ft. SOUTH and 530 ft. EAST FROM THE CENTER of SEC. 31

This map was prepared for Assessment purposes only.

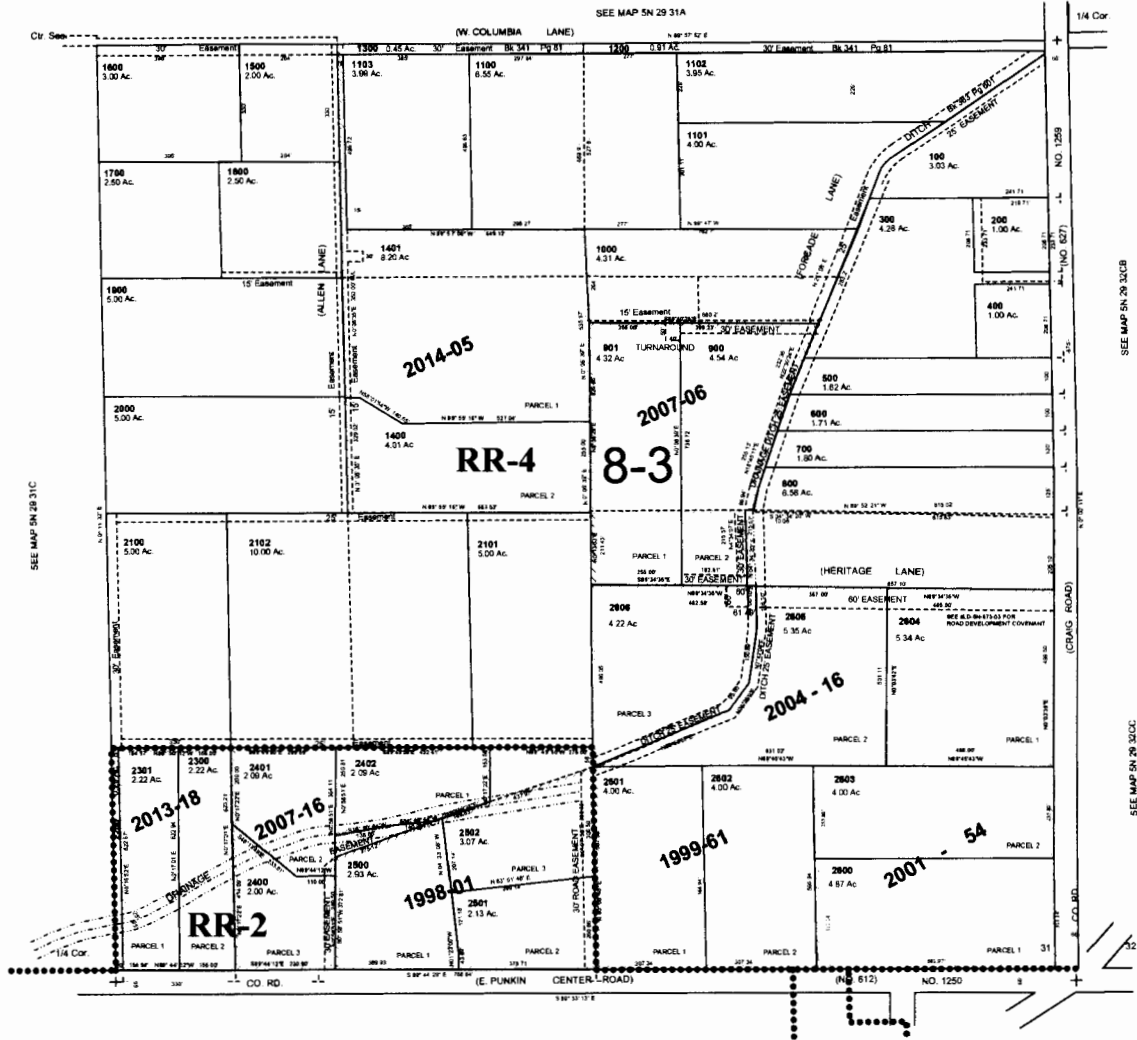


SE 1/4 SEC 31 T5N R29E WM
UMATILLA COUNTY, OR
SCALE: 1" = 200'

06/08/04

5N2931D

AERIAL PHOTO NO. IP-101



5N2931D

RECEIVED BY OWRD

JUL 01 2015

SALEM, OR

G-1015