

Clovercrest Community Water System LLC

BOOK 9

SE 1/4 SEC 29 T36S R5W WM
JOSEPHINE COUNTY

36 5 29 D

BOOK 9

SW 1/4 SEC 28 T36S R5W WM.

JOSEPHINE COUNTY

1" = 200'

RECEIVED BY OWRB
AUG 8 7 2015
SALEM, OR



- Red: 4 inch & 3 inch NSF PVC Pipe
- Blue: 2 inch NSF PVC Pipe
- Red: 4 inch & 3 inch Gate Valve
- Blue: 2 inch Gate Valve

A & B are Clovercrest wells located on property number 1. A two inch PVC line from each well is to the pump control block building. Both 2 inch lines merge into a 4 inch PVC pipe line from the pump building to the 43,000 gallon water storage tank located on number 27.

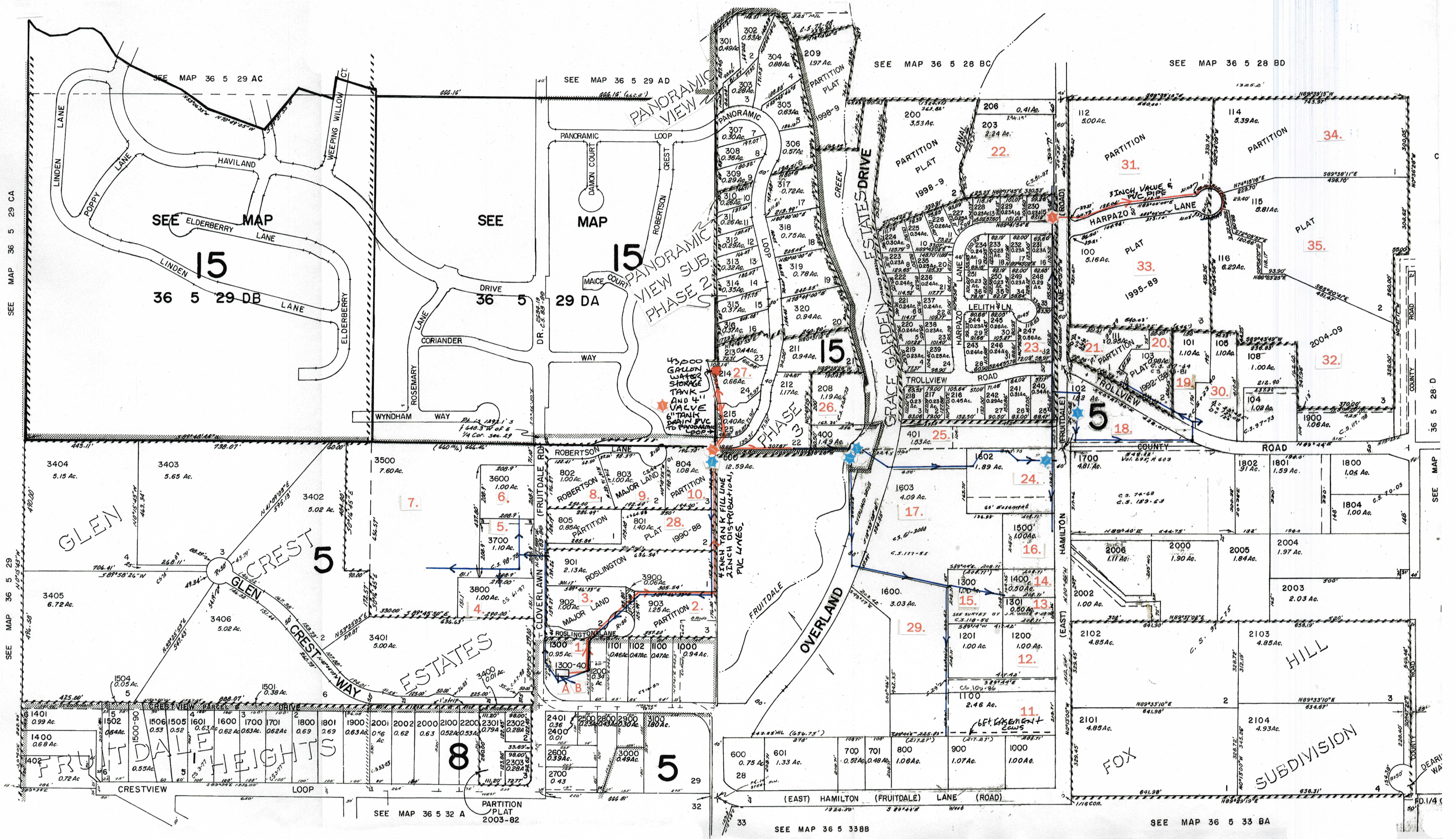
There is a 4 inch PVC distribution line running south from the storage tank crossing Panoramic Loop and turning east and running approximately half way down the hill east, towards Hamilton Lane, reducing to 2 inch PVC, crosses creek and "T"s and goes from one 2 inch line into 2, 2 inch lines, running east to Hamilton Lane and a 2 inch PVC line heading south. The south line services properties numbered 17, 14, 13, 15, 12, 11, and 29.

At Hamilton Lane the line continues to Harpazo Lane. The 2 inch NSF PVC line increases to a 3 inch line crossing Hamilton Lane and to the Harpazo Lane cul-de-sac. Also, the Hamilton Lane 2 inch PVC line crosses Hamilton Lane and serves the Trollview properties numbered 18, 19, 20, 21, and 30.

The 4 inch PVC line from the storage tank is connected to a 2 inch PVC line from the south side of Panoramic Loop serving lots numbered 8, 9, 10, 28, 3, 2, 1, 4, 5, 6, and 7.

Properties numbered 13, 29, and 35, have paid the hook-up fee. Lots numbered 13 and 29 property owners paid a \$1,000 hook-up fee, property number 35 paid a \$2,000 hook-up fee. These three properties are undeveloped (no residences) and are not currently paying for monthly water service.

7-28-2015
Douglas J. Robertson



SEE MAP 36 5 3388

SEE MAP 36 5 33 BA

SEE MAP 36 5 28 D

SEE MAP 36 5 32 A

SEE MAP 36 5 28 B