

WATER RIGHT APPLICATION MAP FOR OTLEY BROS. INC.

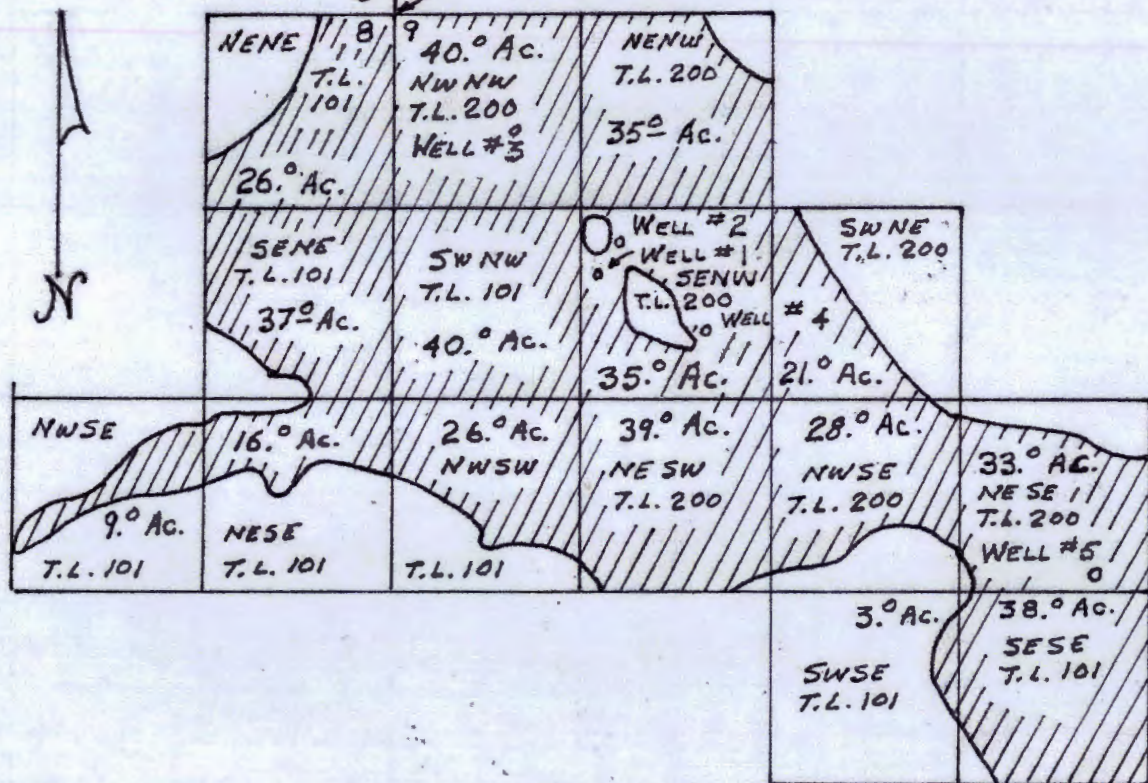
T. 29S., R. 31E., W.M.

RECEIVED

AUG 11 2015

WATER RESOURCES DEPT
SALEM, OREGON

5 4 ✓ MARKED
STONE N.W. CORNER SECTION 9



WELL LOCATIONS FROM THE
N.W. CORNER OF SECTION 9

- WELL #1 1828'S. 1429'E.
- WELL #2 1657'S. 1608'E.
- WELL #3 805'S. 891'E.
- WELL #4 2271'S. 2184'E.
- WELL #5 3920'S 4937'E

IRRIGATION OF 426° ACRES

SCALE 4" = 1 MILE

B.R.S.

G-1029