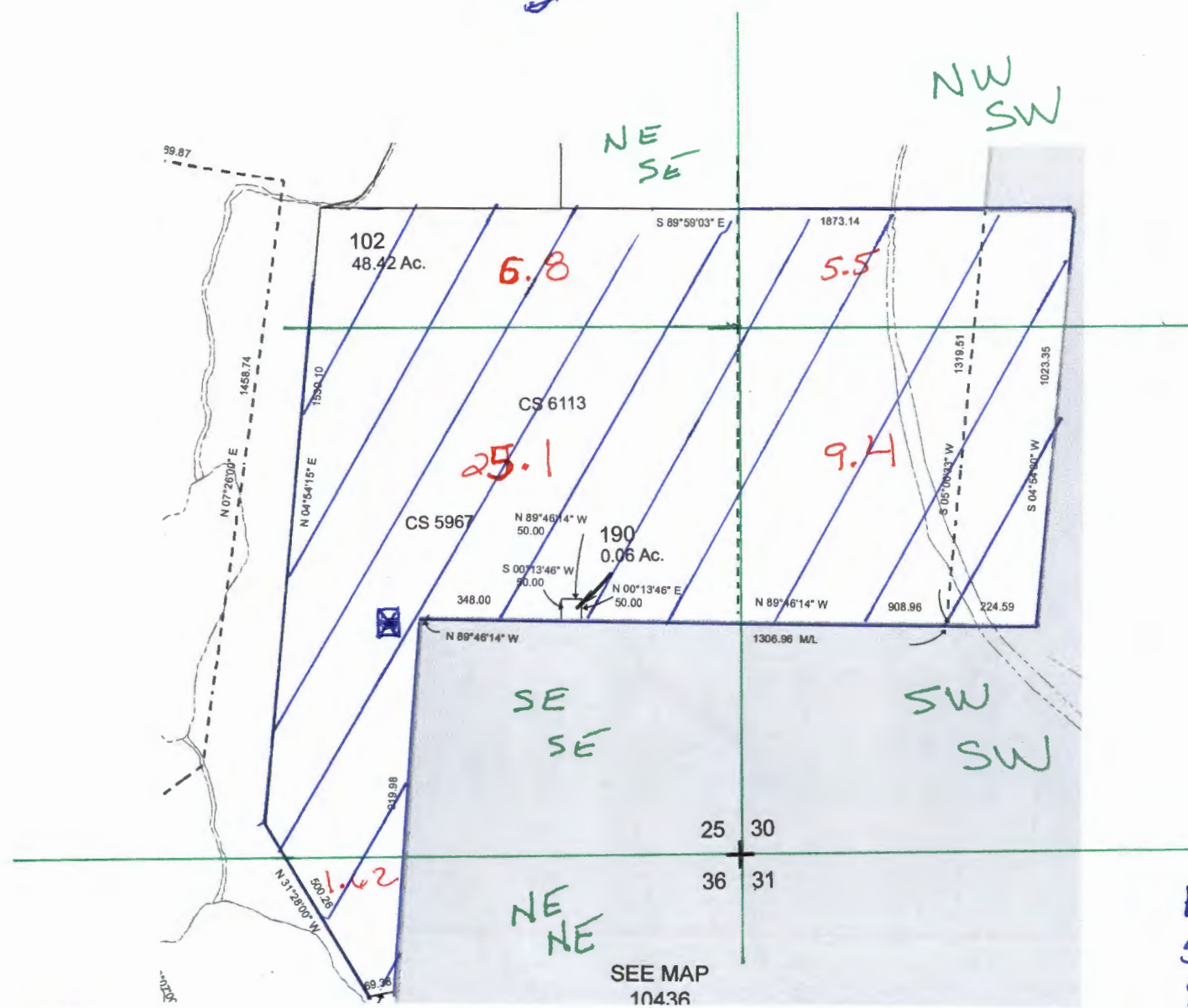


10S 5W 25
9W 30

1" = 400'



NW
SW

NE
SE

6.8

5.5

25.1

9.4

SE
SE

SW
SW

NE
NE

102
48.42 Ac.

CS 6113

CS 5967

190
0.06 Ac.

SEE MAP
10436

G-18136

☒ = WELL
580' N and
860' W of
SW corner
of Section 30
T10S R4W

RECEIVED

SEP 03 2015

WATER RESOURCES DEPT
SALEM, OREGON