

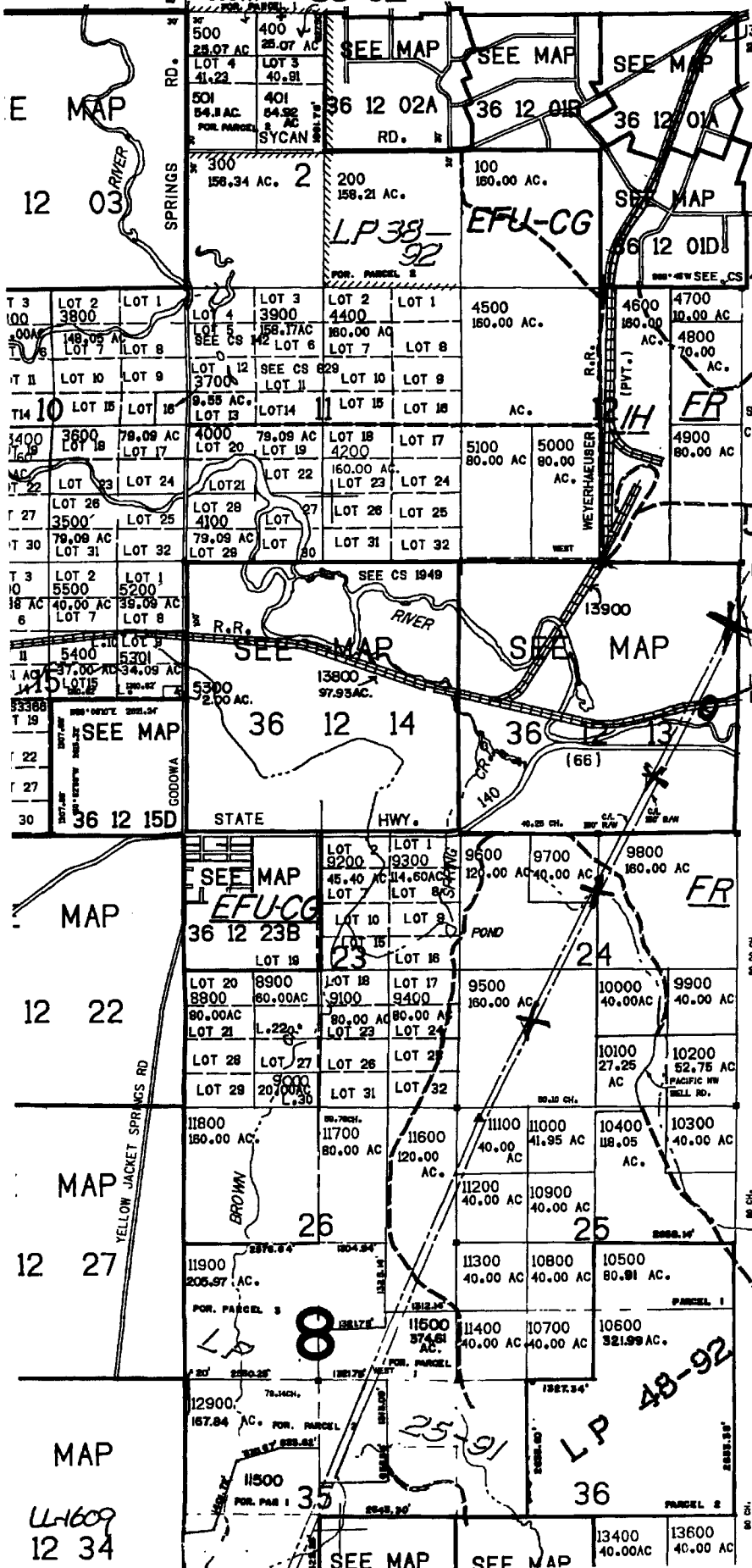
E. W.M.
COUNTY

36 12
& INDEX

N

SEE MAP 35 12

SOUTH LP 38-92



CANCELLED NO.
12600
12700
4300

BPA TRANS.
LINE EASE.
PGE TRANS.
LINE EASE.

POINT OF DIVERSION

SEE MAP 36 13

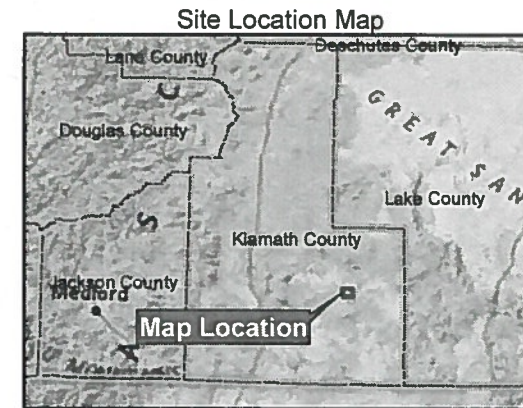
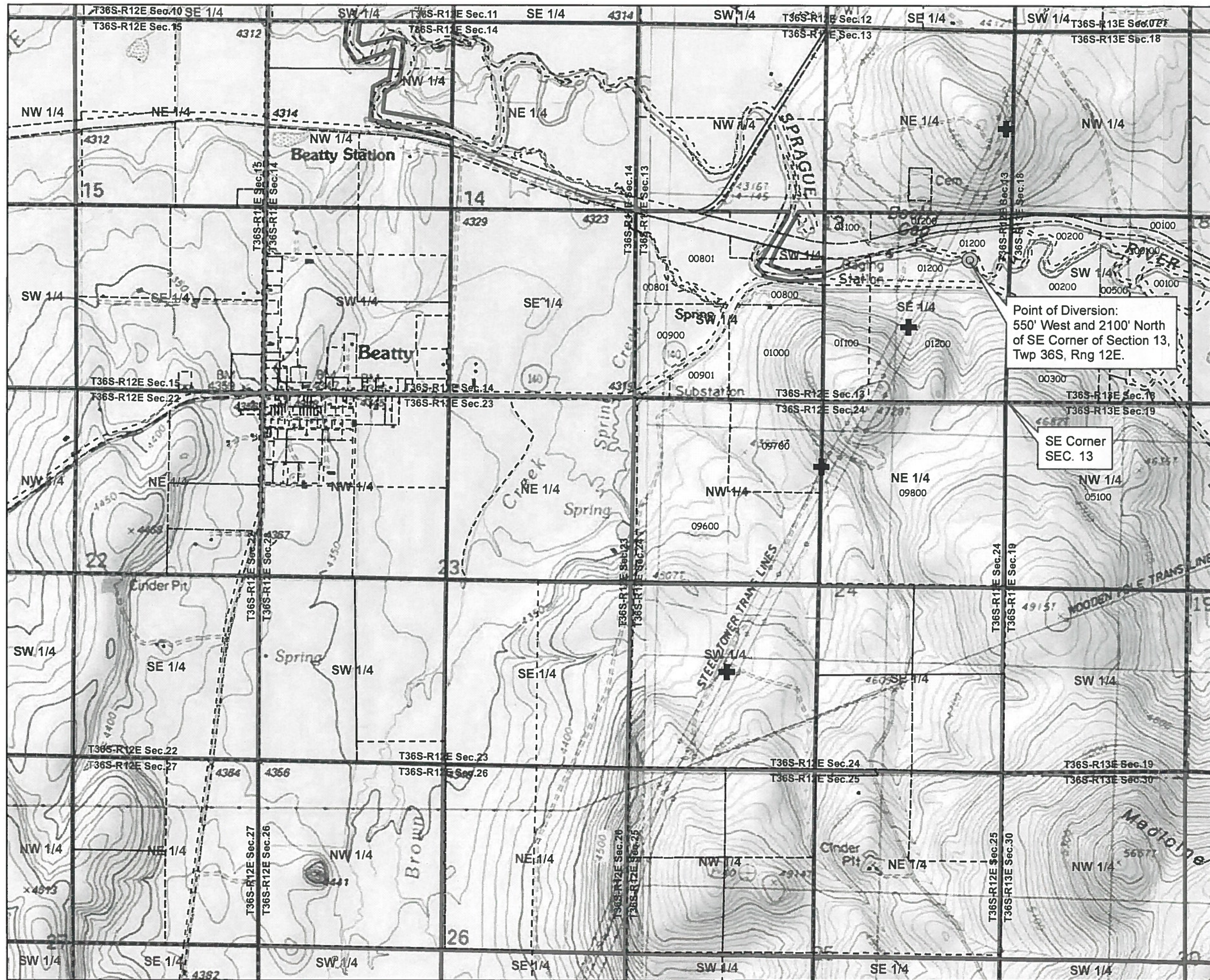
RECEIVED BY OWRD

SEP 21 2015





SALEM, OR

270,000

LL-1609
12 34



Map Features

-  Diversion
-  Point of Use
-  Klamath County Taxlot
-  PLSS 1/4 Section Boundary

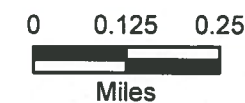
Point of Diversion:
550' West and 2100' North
of SE Corner of Section 13,
Twp 36S, Rng 12E.

SE Corner
SEC. 13

RECEIVED BY OWRD

SEP 21 2015

SALEM, OR



Sprague River Limited Water Use Application

Portland General Electric

Date: 9/16/2015	Drawn By: J.B. Hoy
Drawing File: J:\PGE_Data\Maps\Sprague_Water_Usage.mxd	Rev: