

# GROUND WATER APPLICATION MAP

FOR

LEE HOLDINGS, LLC & VERA CHIPMAN TRUST

LOCATED IN THE

S 1/2 SECTION 35 T.11S.,R.3W.,W.M.

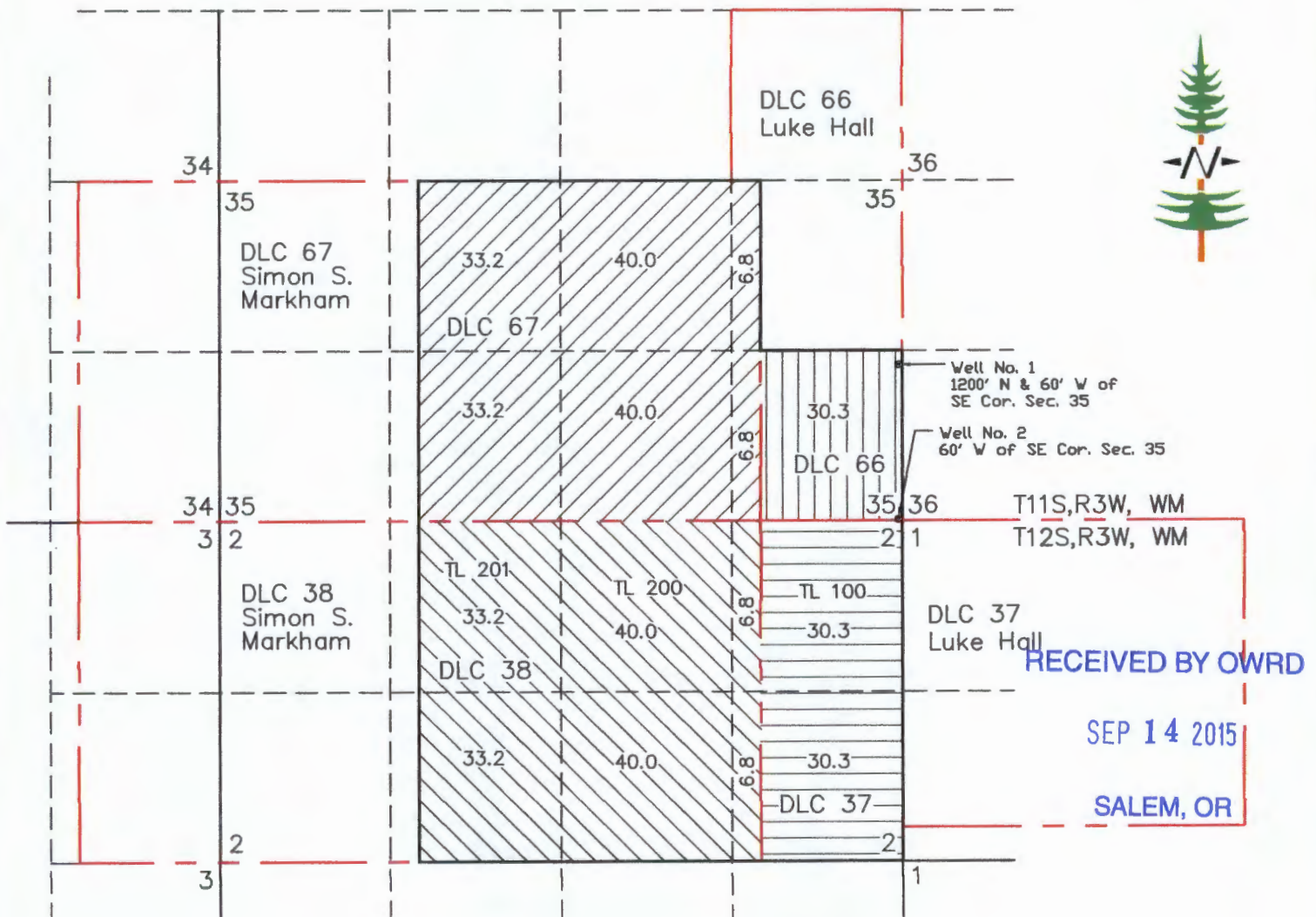
AND

N 1/2 SECTION 2 T.12S.,R.3W.,W.M.

BENTON COUNTY, OREGON

SCALE: 1"=1320'-0"

SEPTEMBER 9TH, 2015



**NOTE:**

THE HATCHURED AREAS REPRESENT THE ACRAEAGE BEING APPLIED FOR WITH THIS APPLICATION AND TOTAL 410 ACRES. ACRAEAGE SUMMARY IS ATTACHED TO APPLICATION FORM.

**LEGEND:**

- SECTION LINES
- - - - FORTY LINES
- IRRIGATION BOUNDARY
- - - - DONATION LAND CLAIM LINE

G-19141

118141

THIS MAP WAS PREPARED FOR ASSESSMENT PURPOSES ONLY

SEC.02 T.12S. R.03W. W.M. LINN COUNTY, OREGON  
1" = 400'

8-29

12 3W 2

9-67

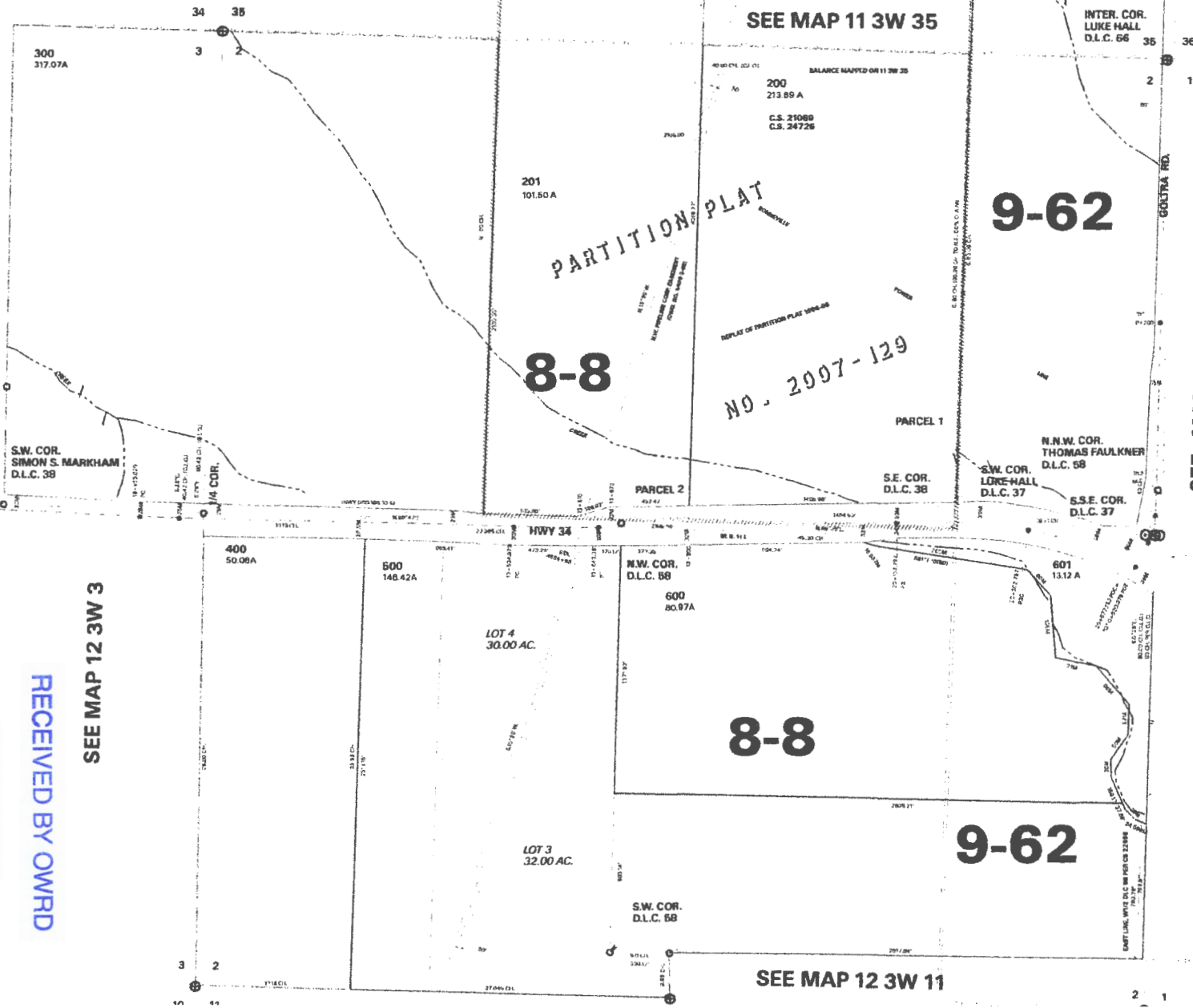
SEE MAP 11 3W 35

9-62

8-8

NO. 2007-129

SEE MAP 12 3W 1



RECEIVED BY OWRD

SEP 14 2015

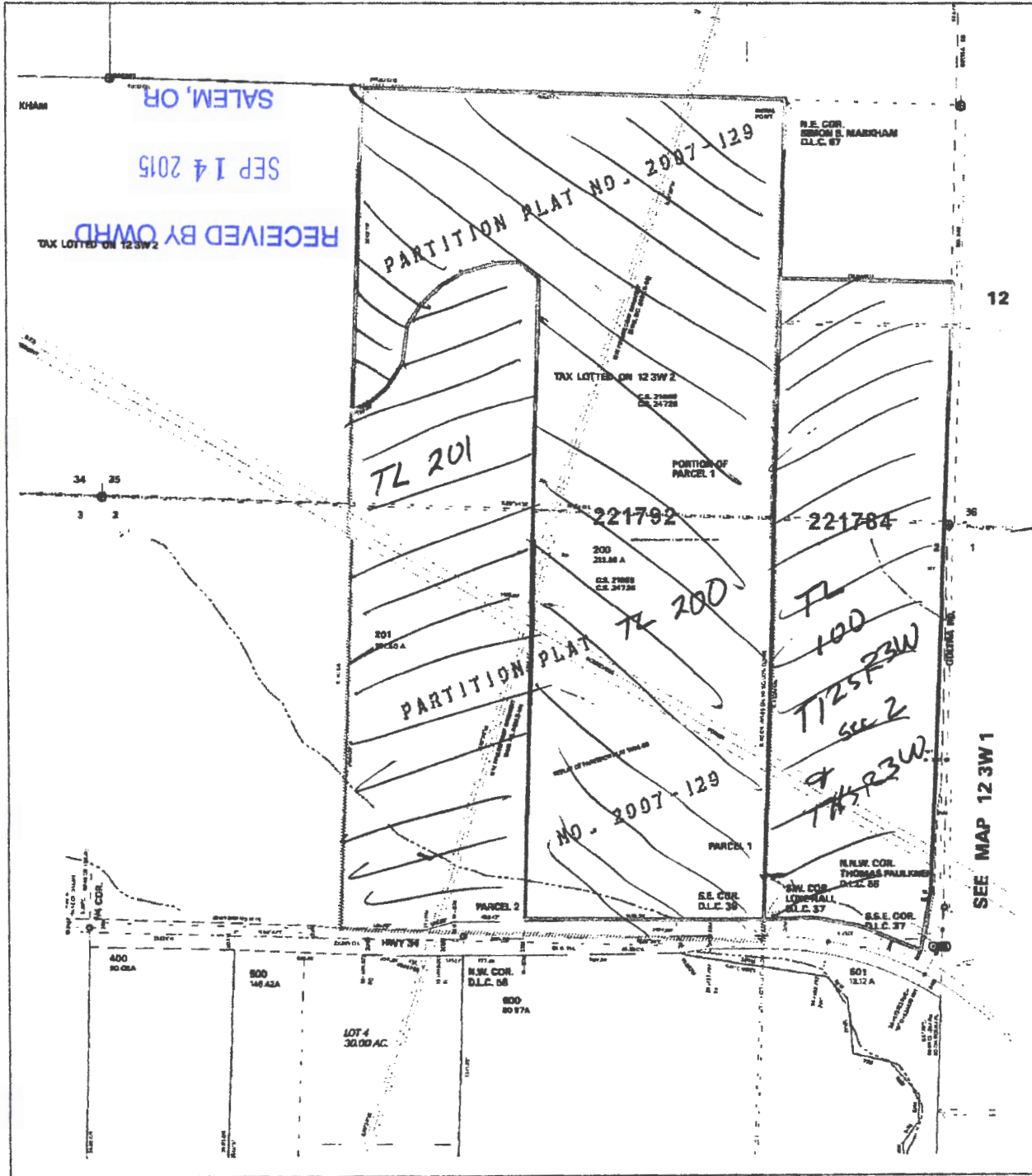
SALEM, OR

SEE MAP 12 3W 3

SEE MAP 12 3W 11

12 3W 2

Assessor's Tax Lot Map - Linn County, Oregon  
12S-3W-Section 2 and 11S-3W-Section 35



### Estimated Well and Mainline Placement Map

*Proposed  
8" buried  
pipe lines*



RECEIVED BY OWRD

SEP 14 2015

SALEM, OR

*G-10141*