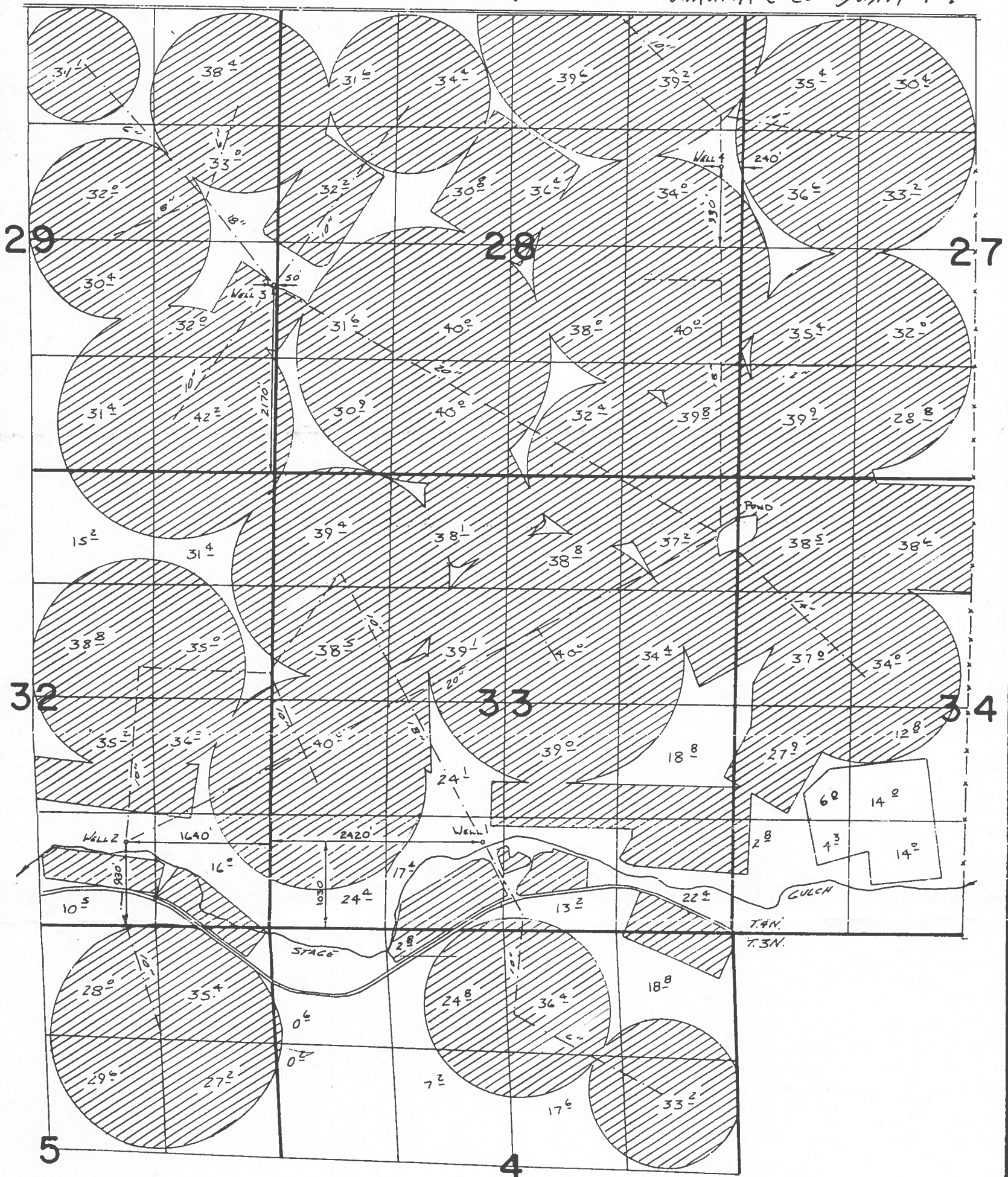


T.3&4N., R. 30E., W.M. Umatilla Co. Basin 7.



FINAL PROOF SURVEY
UNDER

APPL. G-8647 PER. G-7929
IN NAME OF

MERLE GEHRKE

SURVEYED 4-19-1983, BY V.L. Chusick

6-21-83
2/8L 4-10-18-83

Scale: 1" = 1320'

ALL Irr. Acreage defined by this Final Proof Survey map in the amount of 2289.4 acres applying for Supplemental from Columbia River.

Key:

Proposed place of use:

Acceage to be Supplemental from the Columbia River per this application. See breakout of acceage & Tax Lot numbers on attachment "C", "D".

RECEIVED

NOV 17 2006

WATER RESOURCES DEPT
SALEM, OREGON

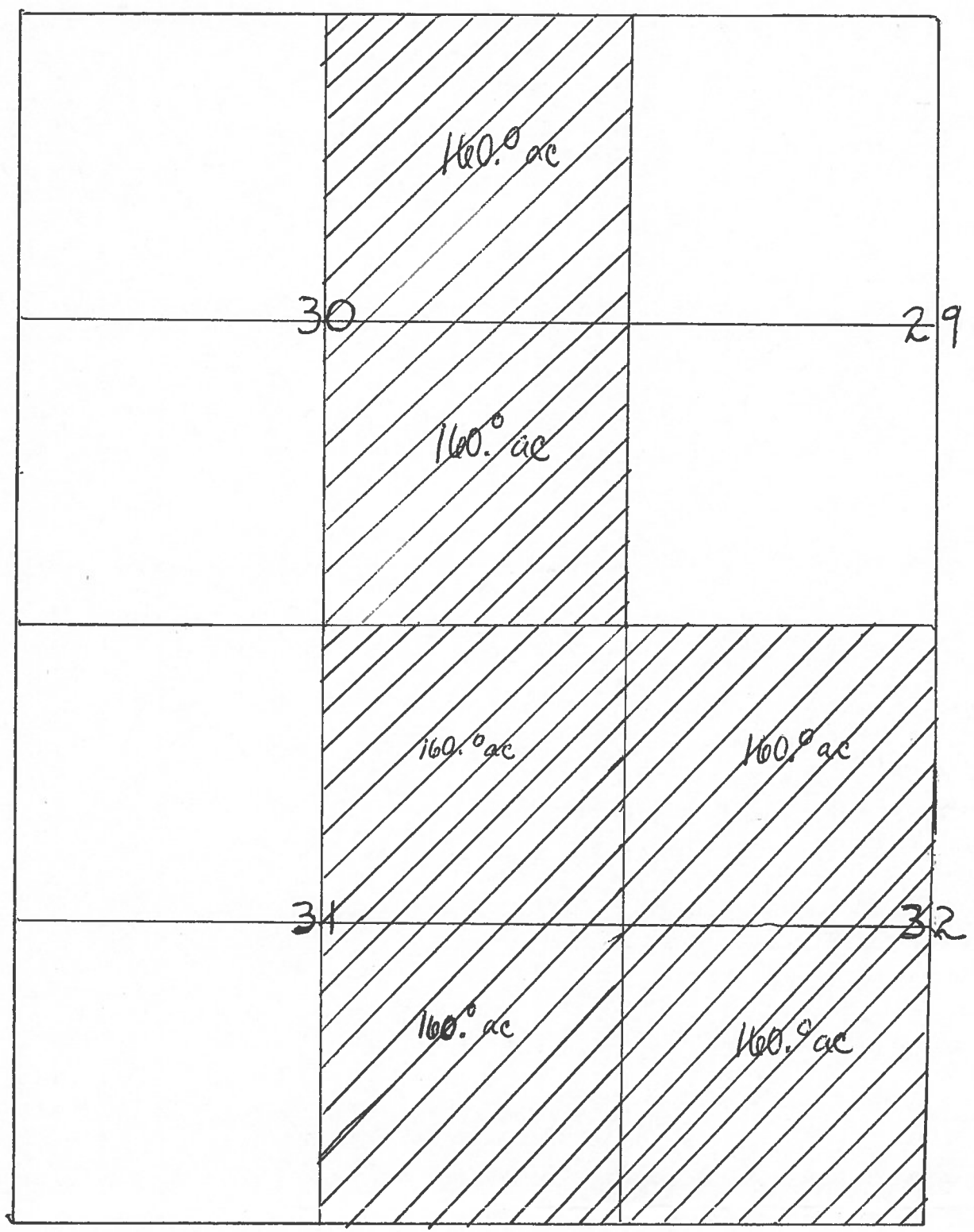
Attachments A-D accompany this map

App No S-86717

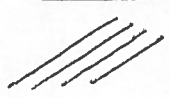
Attachment "A"
 Primary Water Rights
 Locations (applying
 for). From the
 Columbia River



Scale: 1" = 1320'



Key



Proposed place of use for
 Primary Irrigation
 from Columbia River
 total: 960 acres

Primary Irrigation

- 160.0 ac NE 1/4
- 160.0 ac SE 1/4
- T. 4N., R. 30E., Sec 30 (TL 3200)

- 160.0 ac NE 1/4
- 160.0 ac SE 1/4
- T. 4N R. 30E., Sec 31 (TL 3200)

- 160.0 ac NW 1/4
- 160.0 ac SW 1/4
- T. 4N., R. 30E., Sec. 32 (TL 3200)

* Portions of these lands
 are currently under temporary
 transfers 9899, 9643.

