

10016

STATE ENGINEER  
RECEIVED

MAR-4 1925

SALEM, OREGON

10016

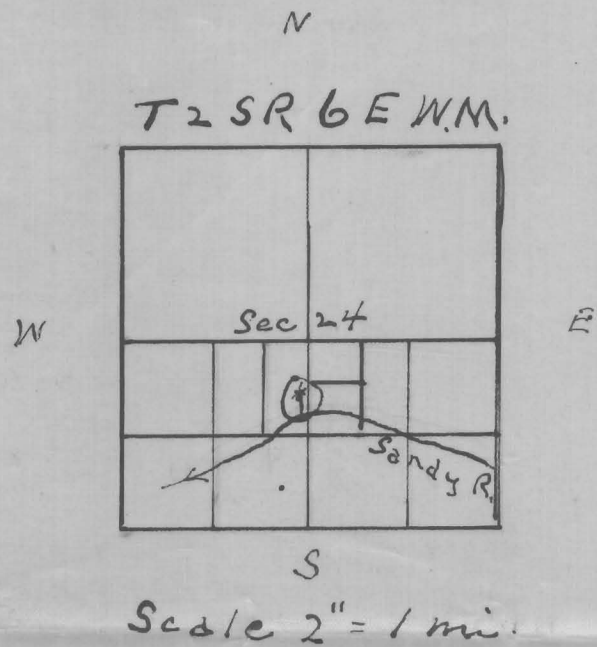
Larger scale map of

### Strong's Hydro Works at Brightwood, Or.

Colored tract  
owned by

Harold W Strong and  
Ethel Strong, his wife  
of Gresham, Or.

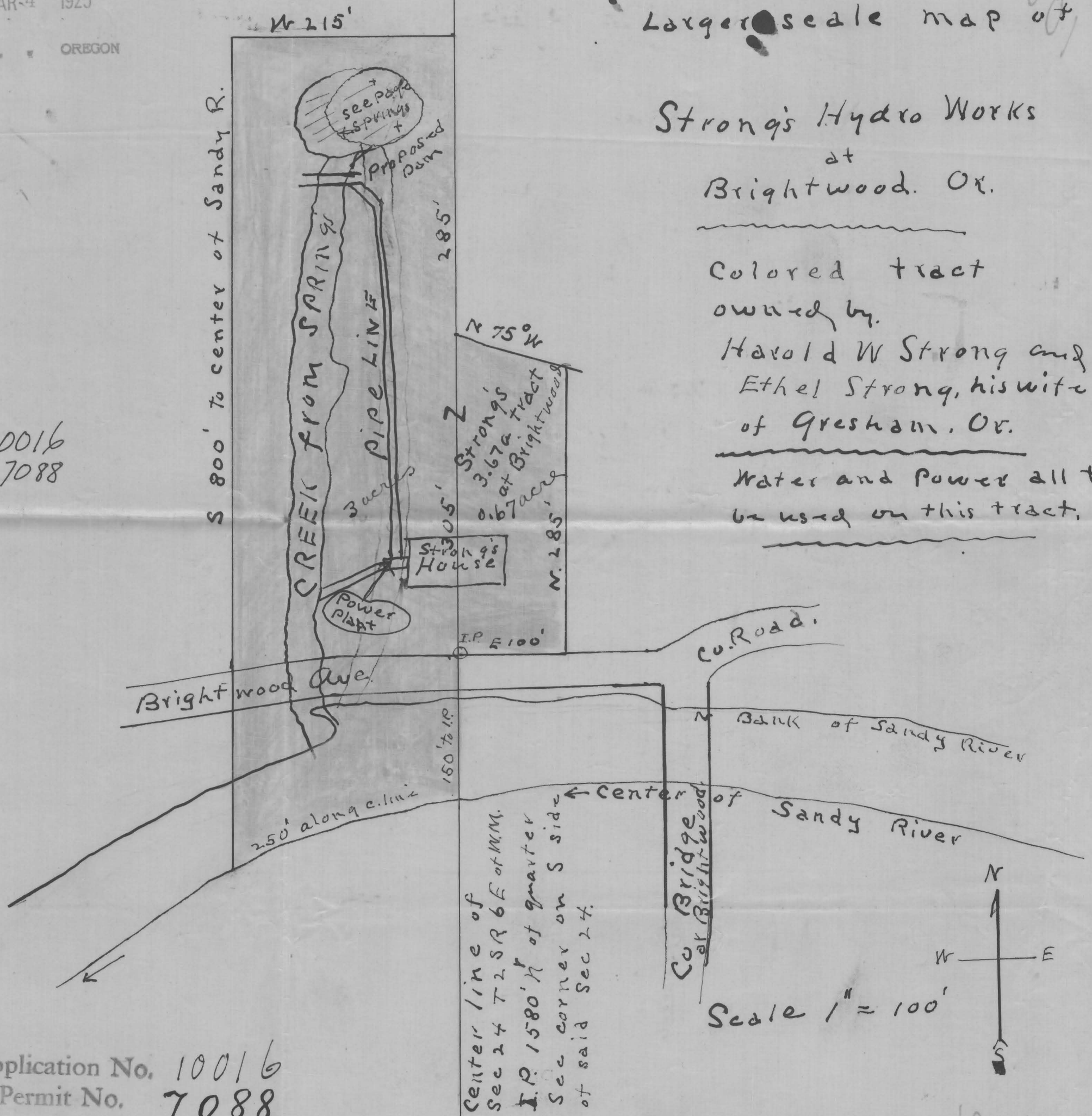
Water and Power all to  
be used on this tract.



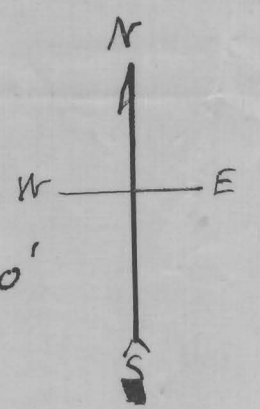
① Strong's Hydro Works  
at  
Brightwood, Or.

x = approximate  
location of springs,  
in E<sup>1/4</sup> of E<sup>1/4</sup> of SW<sup>1/4</sup>  
of said Sec 24.

App 10016  
Per 7088



Application No. 10016  
Permit No. 7088



10016