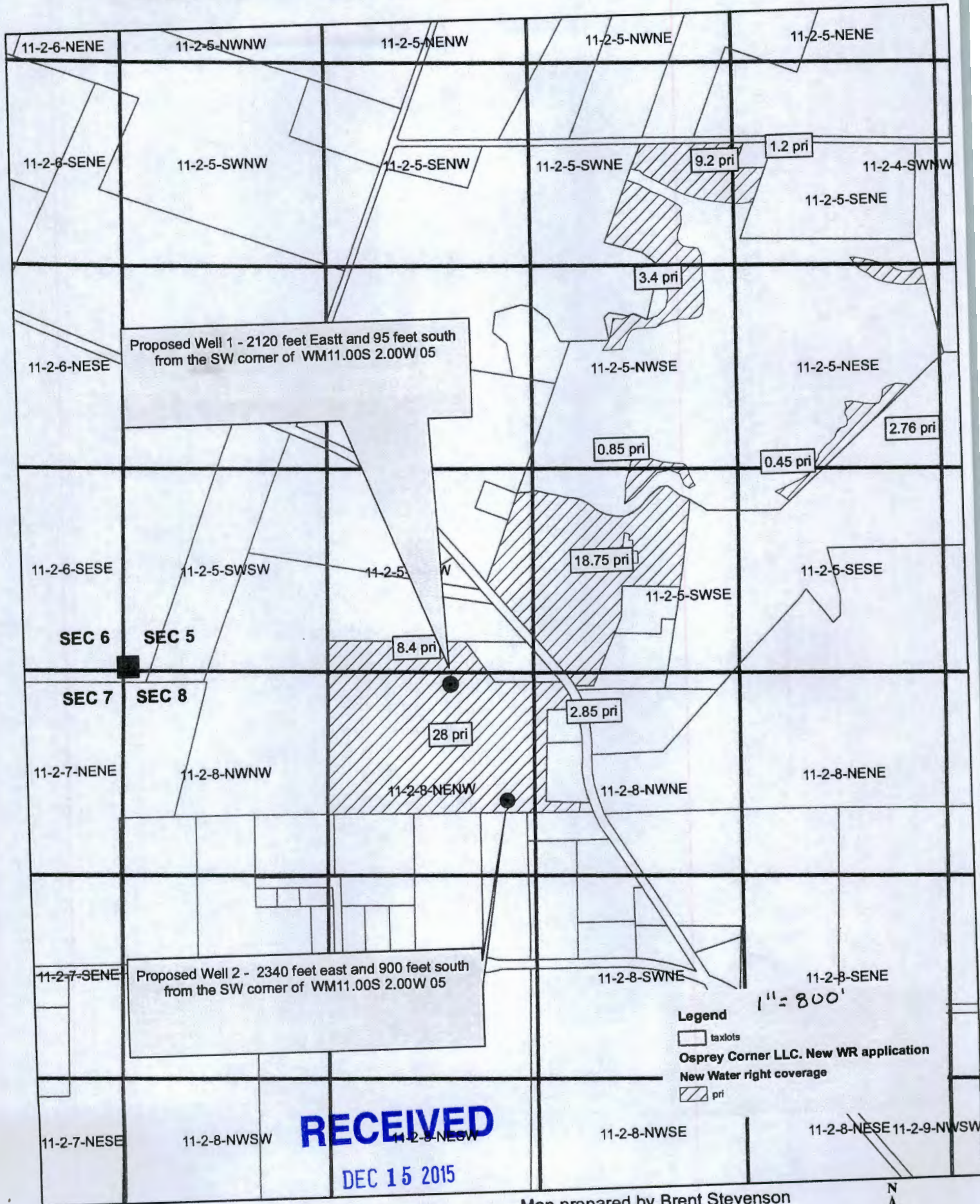


# OSPREY CORNER LLC, (7 Dog Farm)





G-18173

THIS MAP WAS PREPARED FOR ASSESSMENT PURPOSES ONLY

NW1/4 SEC.08 T.11S. R.02W. W.M. LINN COUNTY, OREGON

1" = 200'

11 2W 8B

SEE MAP 11 2W 5

RECEIVED

DEC 15 2015

WATER RESOURCES DEPT  
SALMON, OREGON

8-26

SEE MAP 11 2W 7

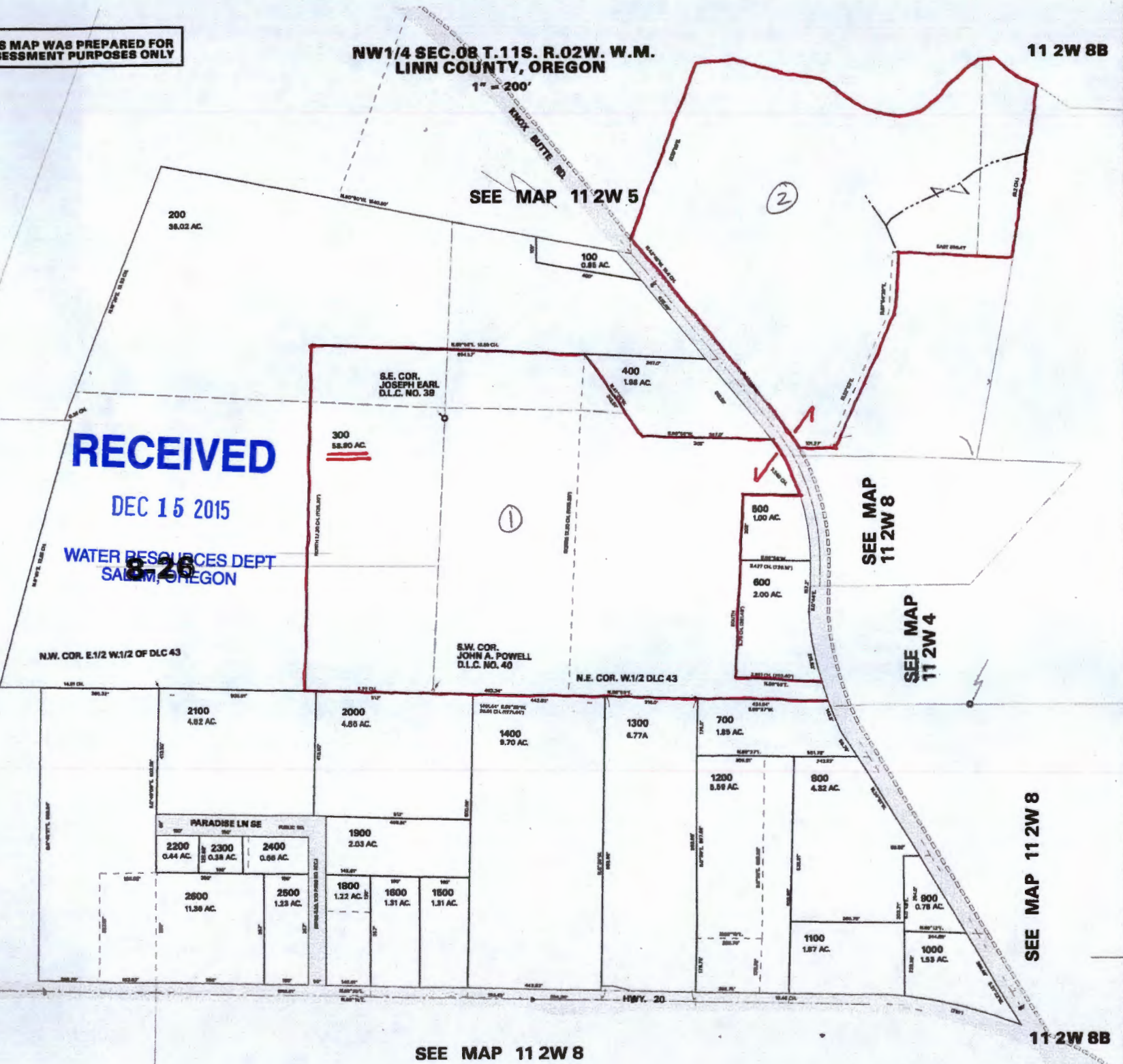
SEE MAP 11 2W 8

SEE MAP 11 2W 4

SEE MAP 11 2W 8

SEE MAP 11 2W 8

11 2W 8B



G-18173

THIS MAP WAS PREPARED FOR ASSESSMENT PURPOSES ONLY

SEC.05 T.11S. R.02W. W.M. LINN COUNTY, OREGON

1" = 400'

11 2W 5

SEE MAP 10 2W 32

8-18

8-18

8-2

8-21

8-26

SEE MAP 11 2W 8B

SEE MAP 11 2W 6

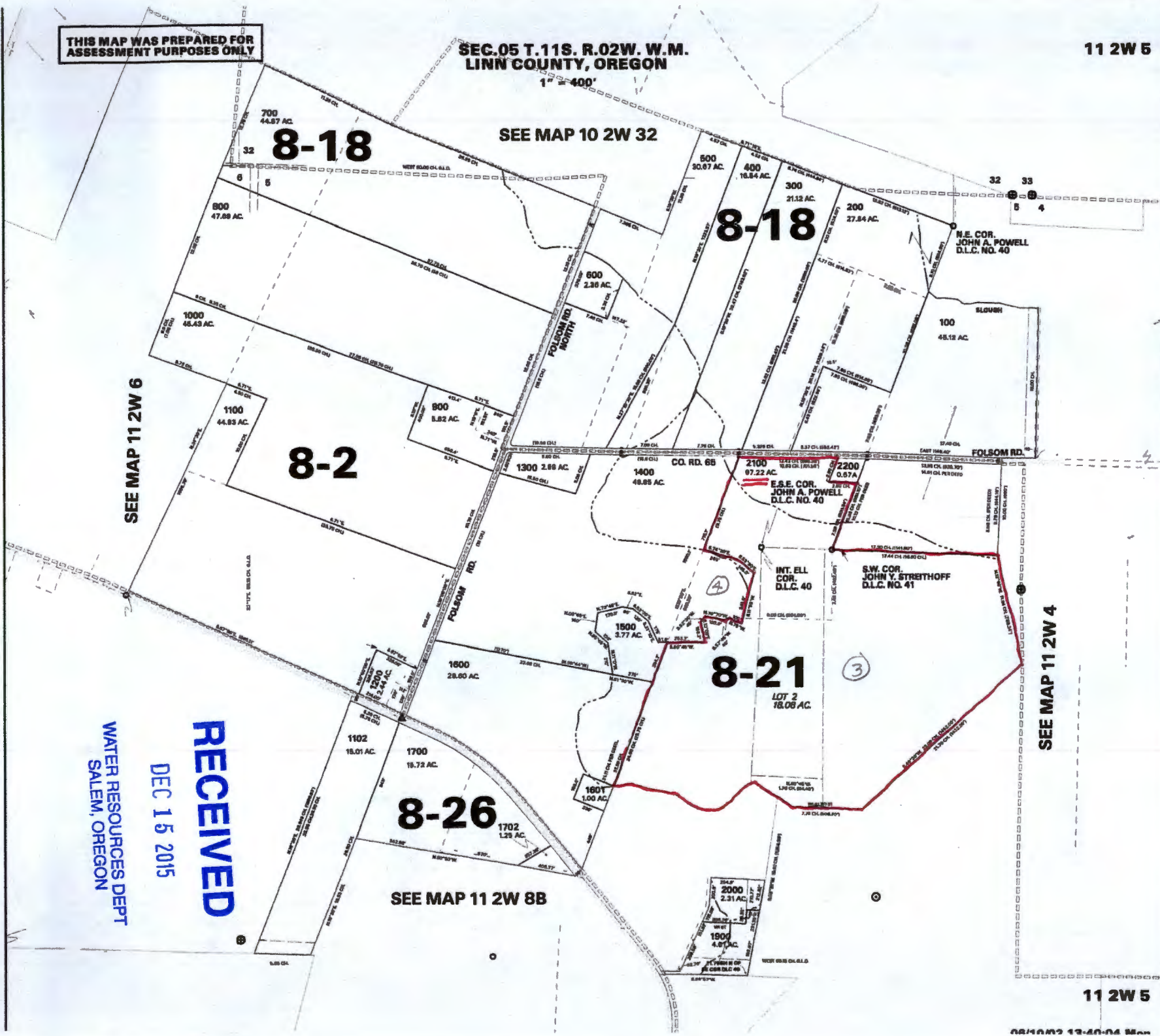
SEE MAP 11 2W 4

WATER RESOURCES DEPT  
SALEM, OREGON

DEC 15 2015

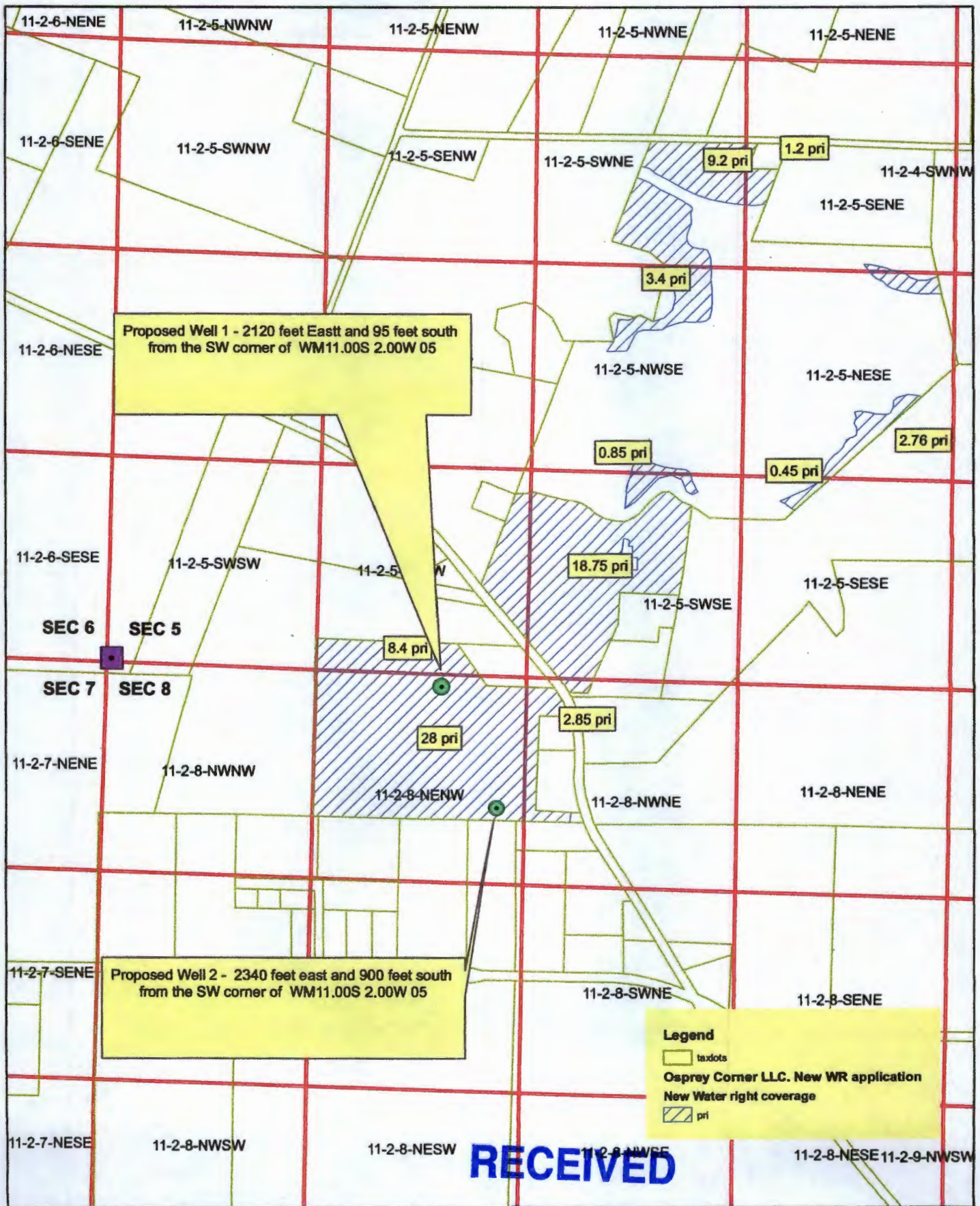
RECEIVED

11 2W 5





# OSPREY CORNER LLC, (7 Dog Farm)

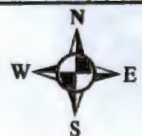


825 412.5 0 825 Feet

Map prepared by Brent Stevenson

**RECEIVED**

DEC 15 2015  
 WATER RESOURCES DEPT  
 SALEM, OREGON



G-10173



6-10-73

THIS MAP WAS PREPARED FOR ASSESSMENT PURPOSES ONLY

NW1/4 SEC.08 T.11S. R.02W. W.M. LINN COUNTY, OREGON

11 2W 8B

1" = 200'

INDEX BITE RD.

SEE MAP 11 2W 5

2

200 38.02 AC.

100 0.95 AC.

S.E. COR. JOSEPH EARL D.L.C. NO. 38

400 1.88 AC.

300 58.80 AC.

1

500 1.90 AC.

SEE MAP 11 2W 8

8-26

800 2.00 AC.

SEE MAP 11 2W 4

N.W. COR. E.1/2 W.1/2 OF DLC 43

S.W. COR. JOHN A. POWELL D.L.C. NO. 40

N.E. COR. W.1/2 DLC 43

SEE MAP 11 2W 7

2100 4.82 AC.

2000 4.89 AC.

1400 8.70 AC.

1300 8.77A

700 1.88 AC.

1200 8.88 AC.

800 4.82 AC.

PARADISE LN SE

1900 2.03 AC.

2200 0.44 AC.

2300 0.38 AC.

2400 0.86 AC.

1800 1.22 AC.

1800 1.31 AC.

1800 1.31 AC.

2800 11.38 AC.

2800 1.23 AC.

1100 1.87 AC.

900 0.78 AC.

1000 1.33 AC.

SEE MAP 11 2W 8

11-2W 8B

SEE MAP 11 2W 8

WATER RESOURCES DEPT SALEM, OREGON

DEC 15 2015

RECEIVED

G-18173

THIS MAP WAS PREPARED FOR ASSESSMENT PURPOSES ONLY

SEC. 05 T. 11S. R. 02W. W.M. LINN COUNTY, OREGON  
1" = 400'

11 2W 5

SEE MAP 11 2W 6

8-18

SEE MAP 10 2W 32

8-18

8-2

8-21

8-26

SEE MAP 11 2W 8B

SEE MAP 11 2W 4

11 2W 5

WATER RESOURCES DEPT  
SALEM, OREGON

DEC 15 2015

RECEIVED

