

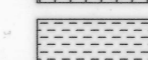
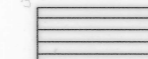





FINAL PROOF MAP

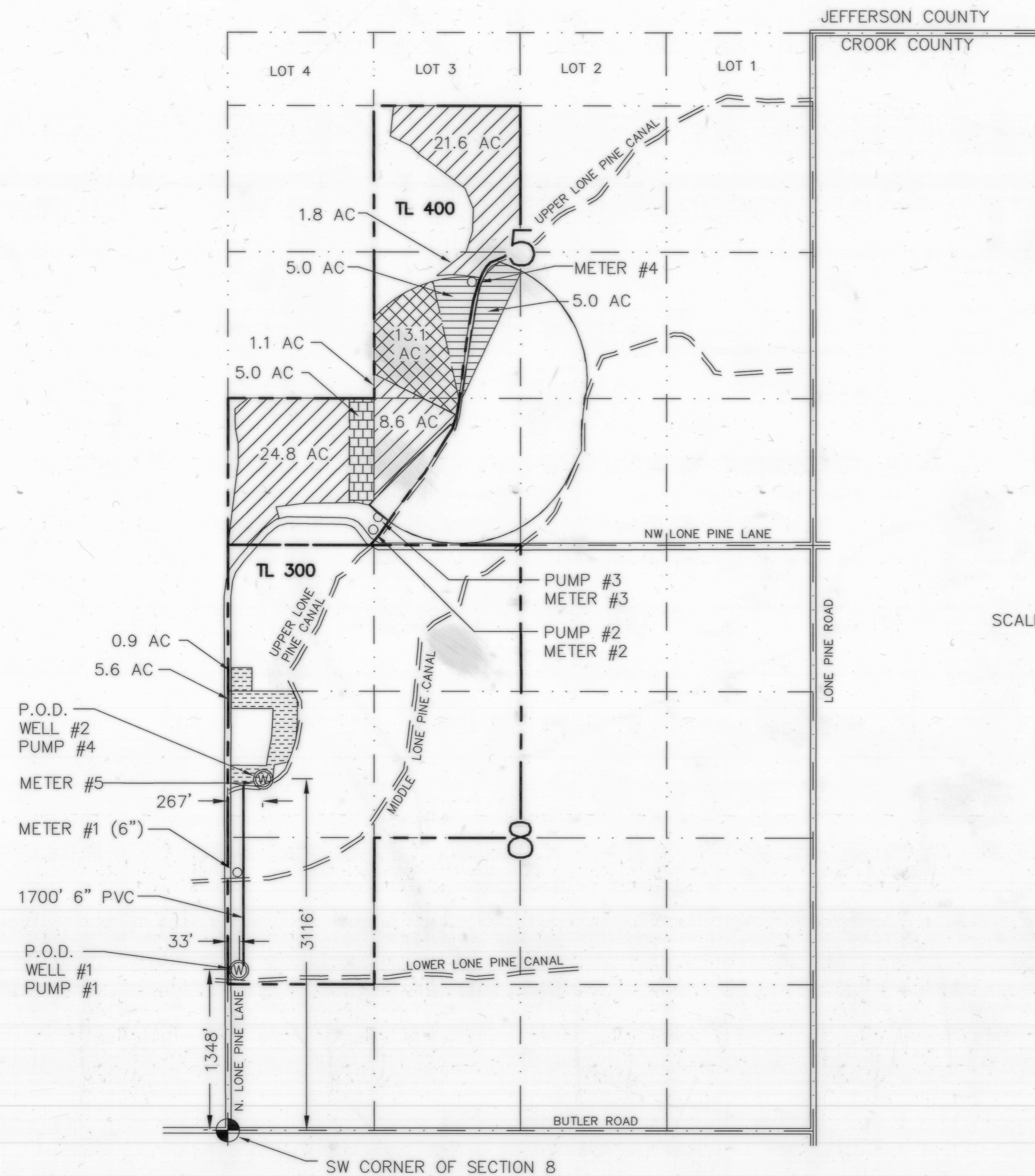
(PERMIT# G-12561)
 (APPLICATION # G-12177)
 FOR THOMAS STRAND
 TAX LOTS 300 & 400

LOCATED IN SECTION 5 AND SECTION 8, TOWNSHIP 14 SOUTH, RANGE 14 EAST, OF THE WILLAMETTE MERIDIAN, CROOK COUNTY, OREGON

LEGEND

-  PRIMARY IRRIGATION 57.9 AC
-  PRIMARY WELL NO. 2 - 5.0 AC
-  PRIMARY WELL NO. 2 - 6.5 AC
PREVIOUS CERTIFICATE G-12561
-
-  WELL NO. 1 SUPPLEMENTAL IRRIGATION 10.0 AC
-  WELL NO. 2 - SUPPLEMENTAL IRRIGATION 13.1 AC
-
-  WELL
-  SECTION CORNER

RECEIVED
 SEP 29 2005
 WATER RESOURCES DEPT
 SALEM, OREGON



SCALE: 1"=1000'

WELL NO.1 - PRIMARY						
PUMP #	HP	TYPE	GPM	METER	IRRIGATION ACRES	LOCATION
1	30	SUBMERSIBLE	380	1	62.9	W 1/2 SECTION 5
2	20	CENTRIFUGAL	140-160	2	24.8	SW 1/4 SW 1/4 SECTION 5
3	30	CENTRIFUGAL	520-620	3	8.6	SE 1/4 SW 1/4 SECTION 5
3				3	1.1	NE 1/4 SW 1/4 SECTION 5
3				4	1.8	NE 1/4 SW 1/4 SECTION 5
3				4	21.6	SE 1/4 NW 1/4 SECTION 5
TOTAL					57.9	

WELL NO.1 SUPPLEMENTAL			
PUMP #		IRRIGATION ACRES	LOCATION
3		10	SE 1/4 SW 1/4 SECTION 5
TOTAL			67.9

WELL NO. 2 - PRIMARY						
PUMP #	HP	TYPE	GPM	METER	IRRIGATION ACRES	LOCATION
4	15	SUBMERSIBLE	160	5	0.9 *	NW 1/4 NW 1/4 SECTION 8
4				5	5.6 *	SW 1/4 NW 1/4 SECTION 8
3					5.0	SW 1/4 SW 1/4 SECTION 5
TOTAL					11.5	

WELL NO.2 SUPPLEMENTAL						
PUMP #	HP	TYPE	GPM	METER	IRRIGATION ACRES	LOCATION
4				5	13.1	SE 1/4 NW 1/4 SECTION 8
TOTAL					24.6	

I, William R. Tye, Certified Water Right Examiner in the State of Oregon, hereby certify the above final proof map was prepared under my direct supervision.

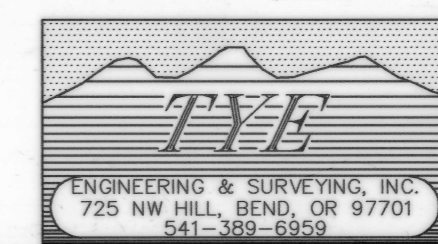
The preparation of this map is for the purpose of identifying the location of the water right only and has no intent to provide dimensions or locations of property ownership lines.



RENEWAL: JUNE 30, 2006

COBU MAP #0187

* PREVIOUS CERTIFICATE



TITLE: FINAL PROOF MAP
JOB NO: 703-22 TOM STRAND
SCALE: 1"=1000' BY: JLC
FIELD BOOK: DATE: 9-27-05
DWG: 703-22-8-18-05 SHEET: 1 OF 1

0187