

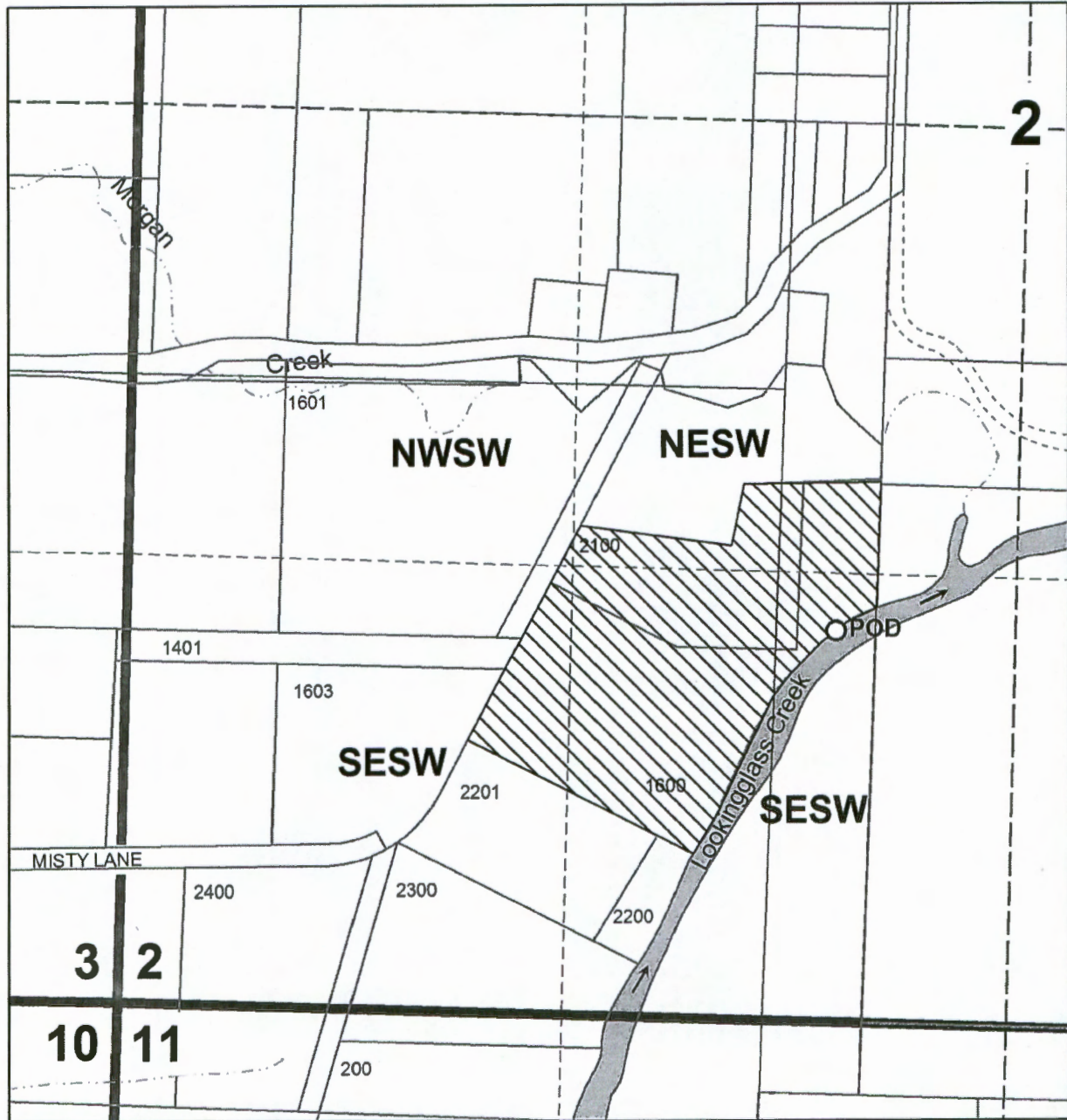
RECEIVED

DEC 22 2015

WATER RESOURCES DEPT
SALEM, OREGON



**Application for
B & B Roads Inc.
SW 1/4 Section 2 - T28S - R7W
Douglas County
Scale: 1" = 500'**



**Point of diversion is 1500 ft. South and 530 ft. West
from the center of Section 2.**

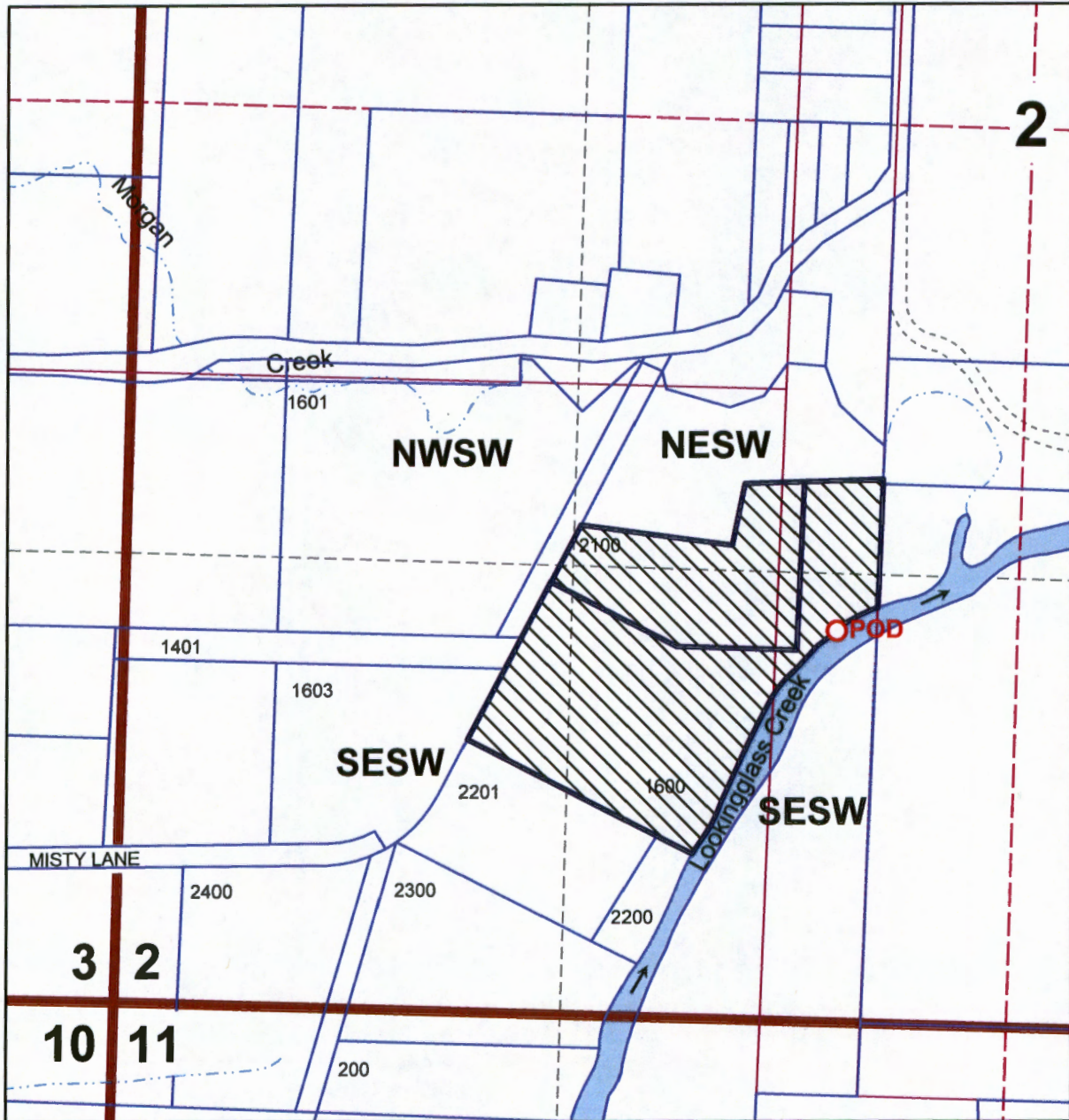


Commercial Place of Use

S-88158



**Application for
B & B Roads Inc.
SW 1/4 Section 2 - T28S - R7W
Douglas County**



**Point of diversion is 1500 ft. South and 530 ft. West
from the center of Section 2.**



Commercial Place of Use

RECEIVED BY OWRD

DEC 21 2015

SALEM, OR

5-88158

THIS MAP WAS PREPARED FOR ASSESSMENT PURPOSE ONLY.

SW1/4 SEC.2 T.28S. R.7W. W.M.
DOUGLAS COUNTY

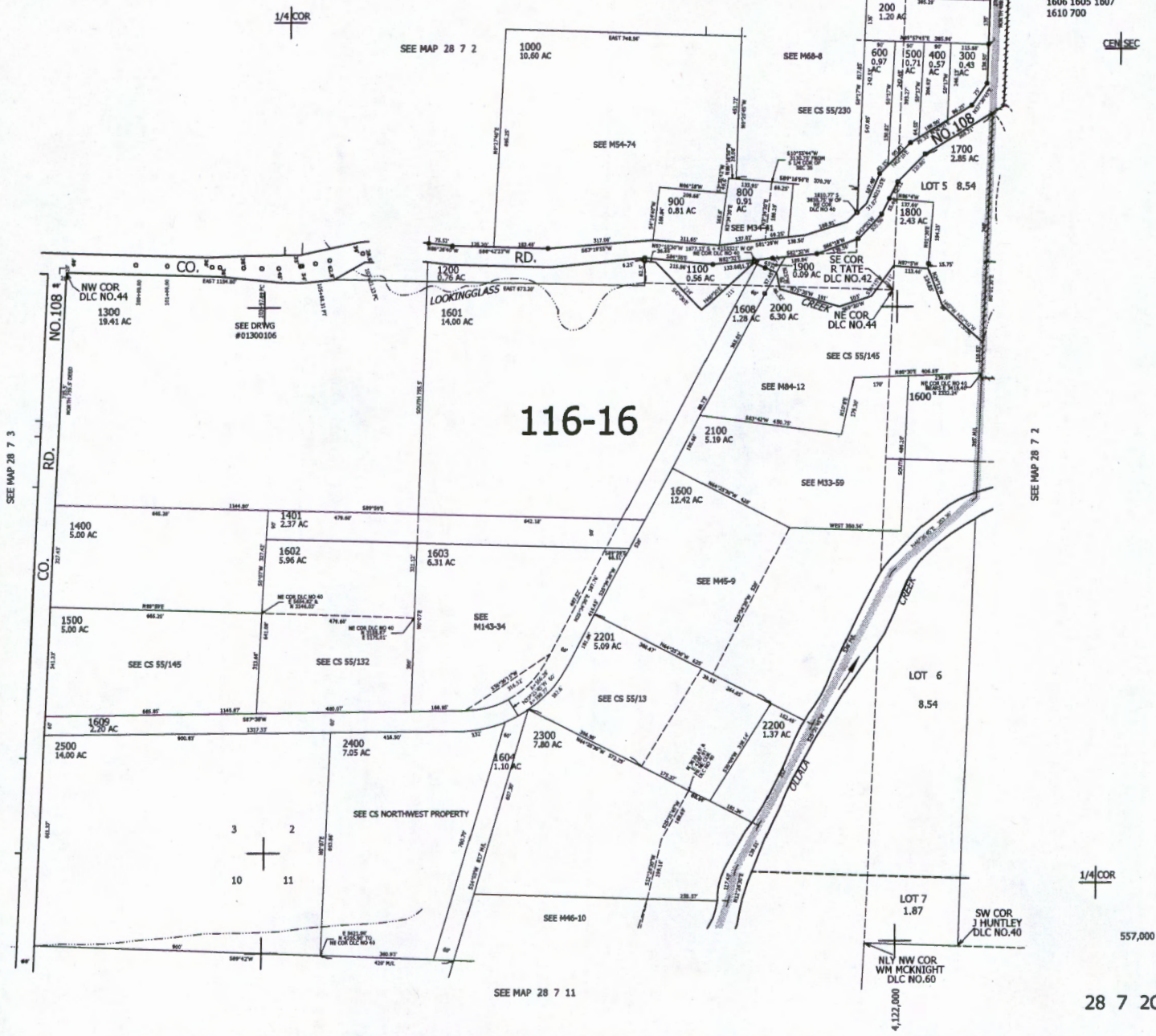
REVISED ON
2-1-12

28 7 2C

1" = 200'

CANCELLED NOS
1606 1605 1607
1610 700

CEN SEC



1/4 COR

557,000

28 7 2C

RECEIVED BY OWRD

DEC 21 2015

SALEM, OR

P-88158