

RECEIVED

DEC 21 2015

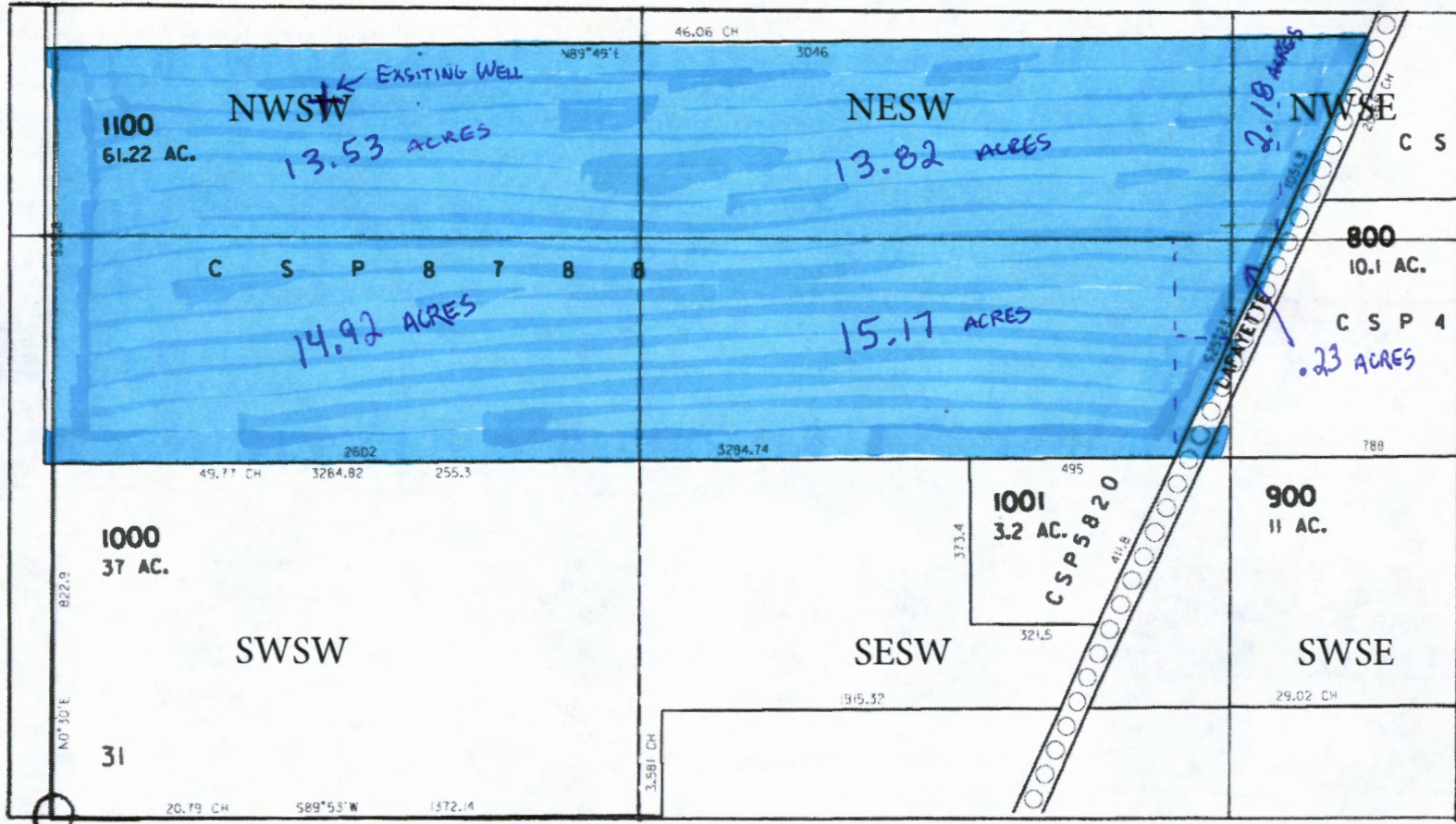
WATER RESOURCES DEPT
SALEM, OREGON

T 4 S., R 3 W
Section 31

RECEIVED

DEC 22 2015

WATER RESOURCES DEPT
SALEM, OREGON



Well is located 1,625 feet North and 620 feet East from the SW corner of Section 31



1" = 400'
[Scale bar]