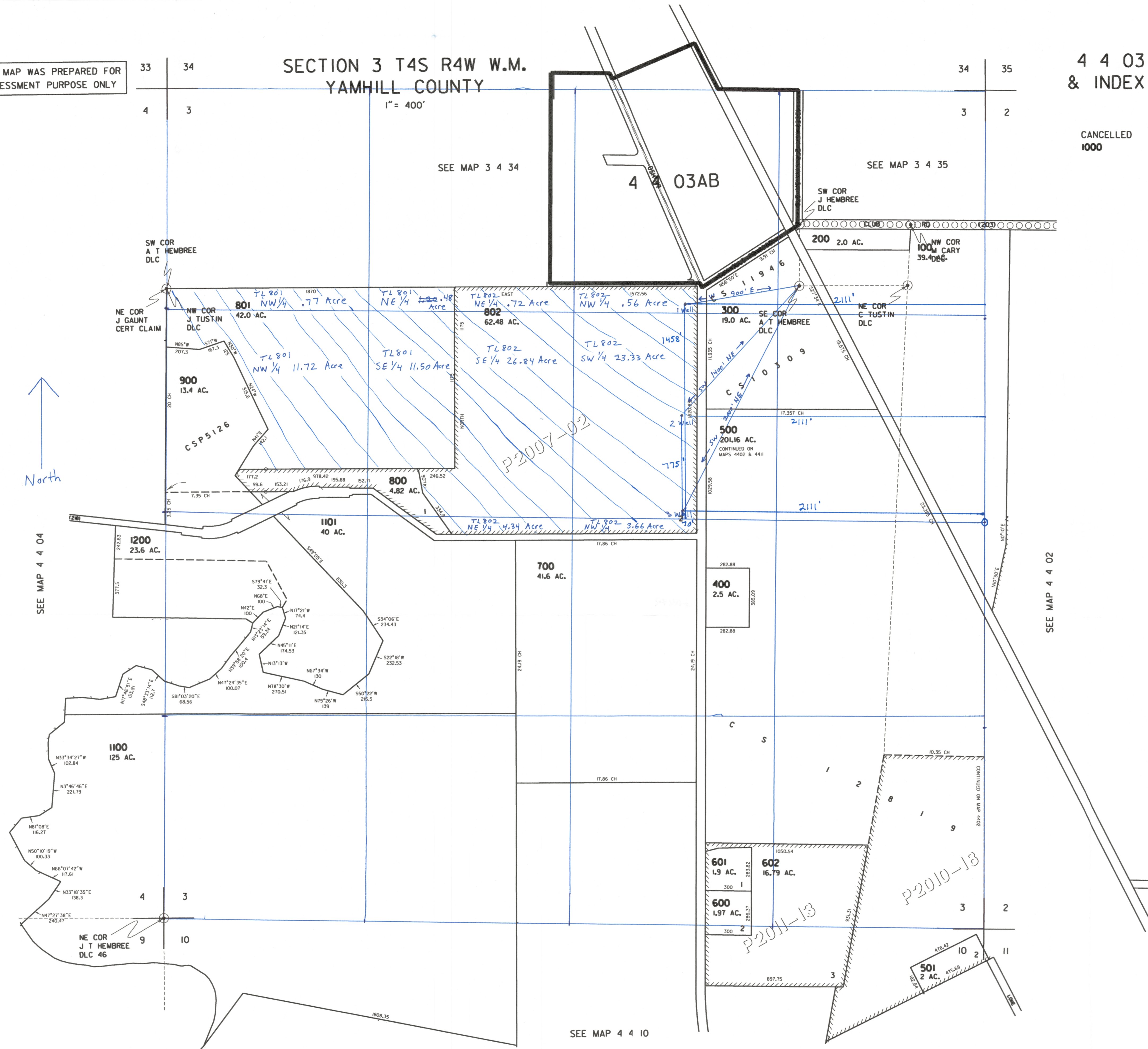


THIS MAP WAS PREPARED FOR ASSESSMENT PURPOSE ONLY

SECTION 3 T4S R4W W.M. YAMHILL COUNTY

4 4 03 & INDEX

CANCELLED 1000



North

SEE MAP 4 4 04

SEE MAP 4 4 02

SEE MAP 4 4 10

REVISED 5-18-12 SB

4 4 03