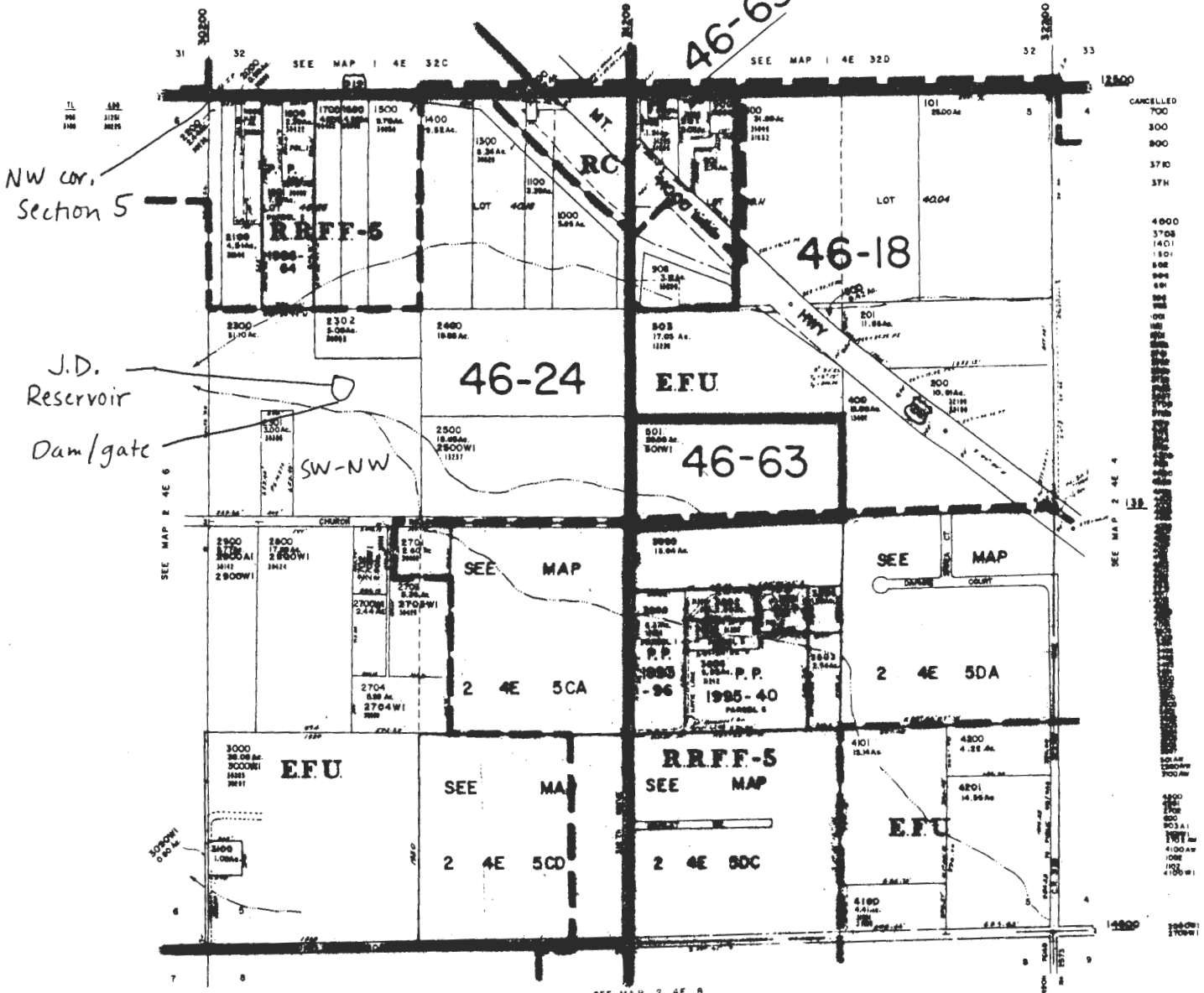


SECTION 5 T.2S.R.4E.W.M.
CLACKAMAS COUNTY

2 4E 5

This map was prepared for assessment purpose only.

1" = 400'



NW cor.
Section 5

J.D.
Reservoir
Dam/gate

Reservoir located:
810' E, 1800' S fr. NW corner section 5

1" = 1000'



RECEIVED

JAN 05 2016

WATER RESOURCES DEPT
SALEM, OREGON

R-88163