

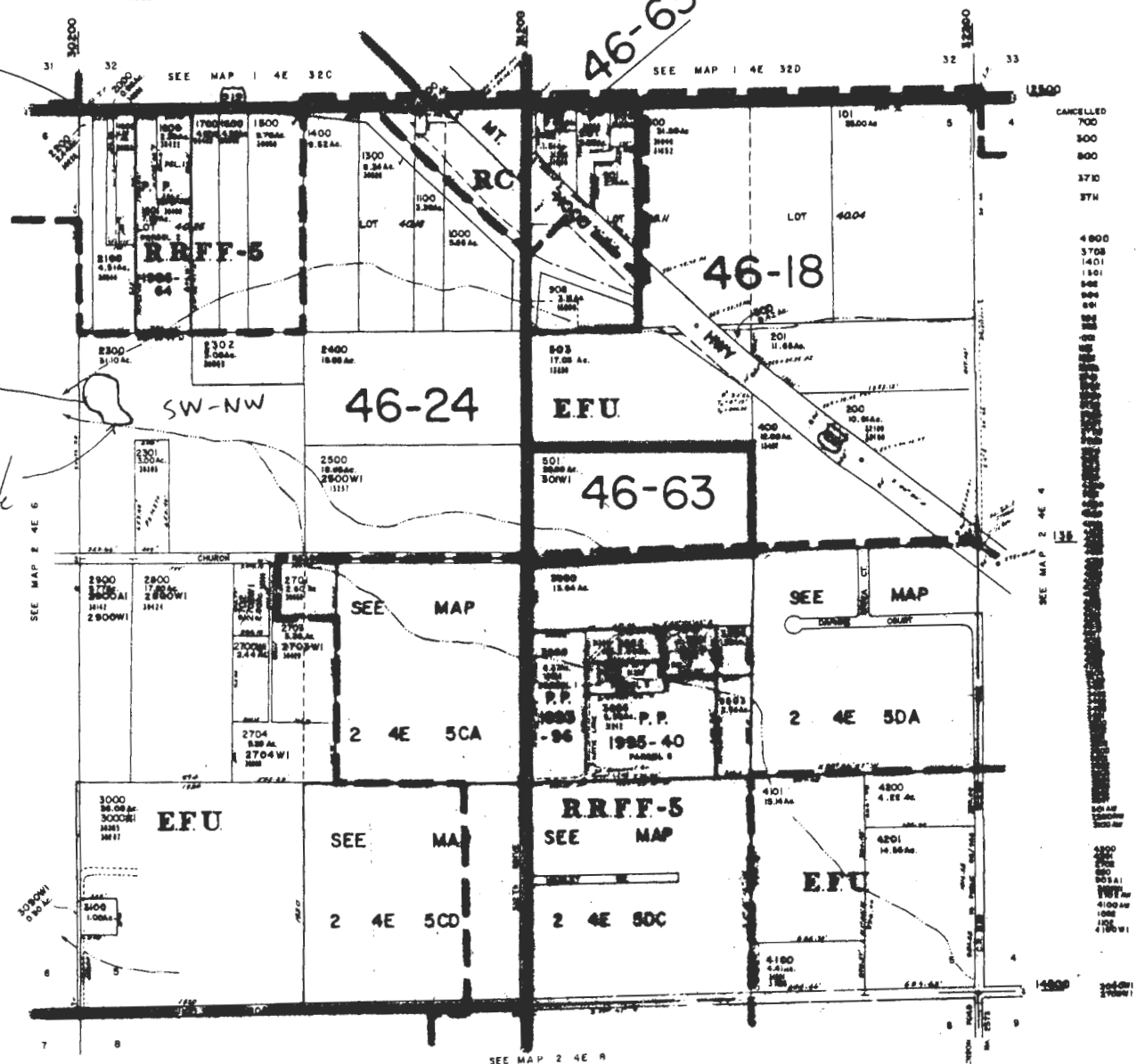
SECTION 5 T.2S.R.4E.W.M.
CLACKAMAS COUNTY
1" = 400'

This map was prepared for assessment purposes only.

NW cor
Sec. 5

Donahue Reservoir

Dam/gate



Reservoir located 150' E, 1700' S fr. NW corner section 5

1" = 1000'



RECEIVED

JAN 05 2016

WATER RESOURCES DEPT
SALEM, OREGON

R-88164