

RECEIVED

DEC 13 1979

WATER RESOURCES DEPT
SALEM, OREGON

T. 22 S. R. 7 W.

Pump
2630' N +
2570' E SW
from
C.N. S. 17

NW 1/4 SW 1/4

Spring 1830' N. + 380' E
from SW Cor. S.
17.
03/397

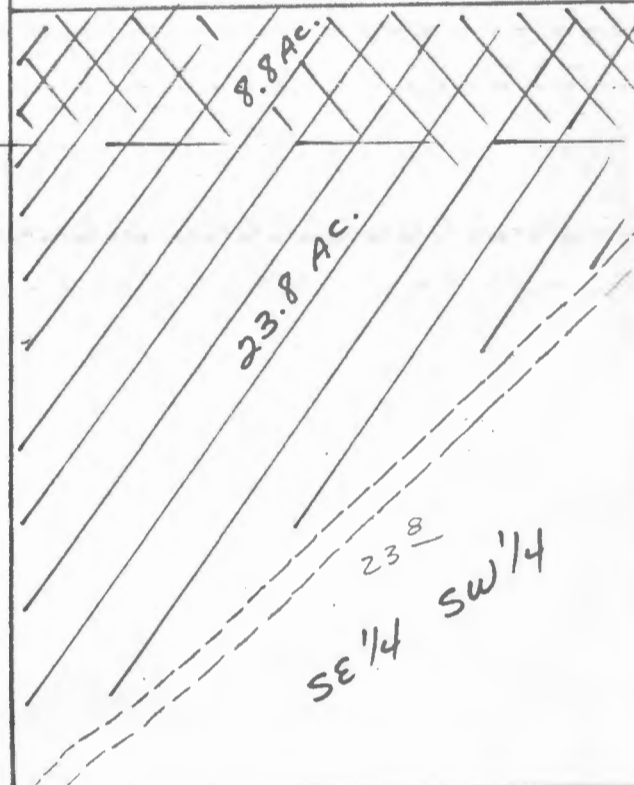
ELK Creek

NE 1/4 SW 1/4

NW 1/4 SE 1/4

800
5
96 126
'00/250

1/2 AC.
HO.



21 21

2 0 3
0 3

SW 1/4 SW 1/4

SW 1/4 SE 1/4

SE 1/4 SW 1/4

Application No. 59559
Permit No. 44363

18 17

1" = 400'

EAST 80' N