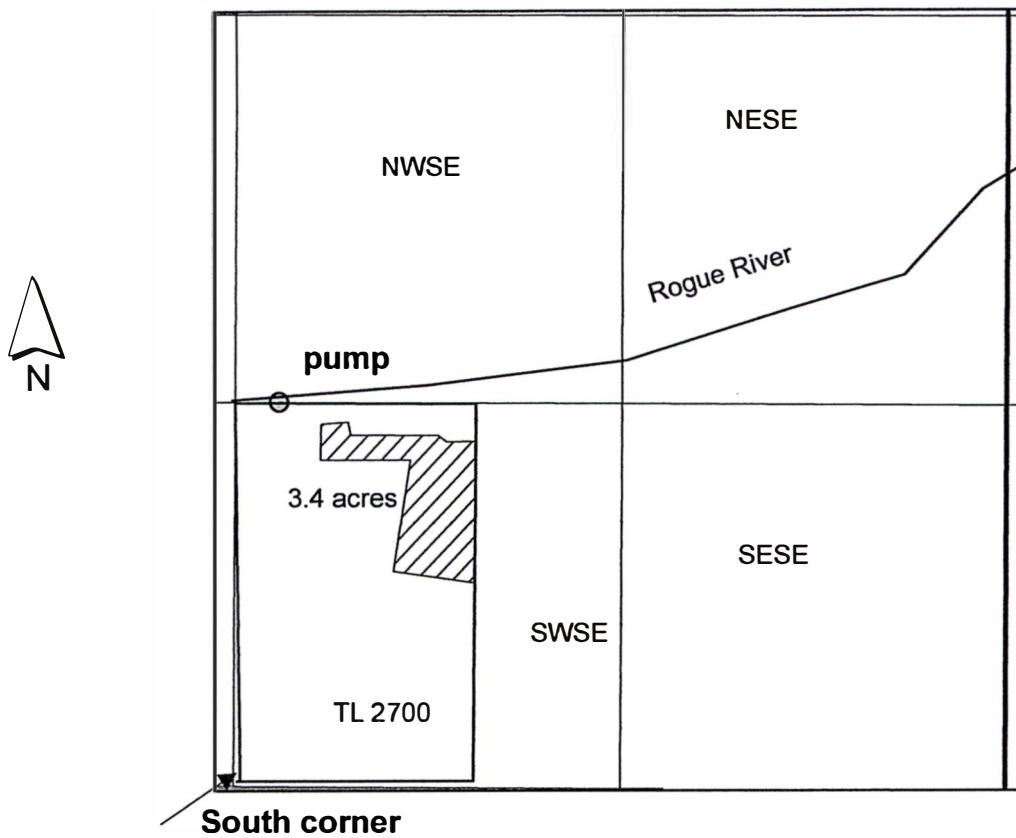


T35S R7W Southeast Quarter Section 35



1 inch = 660 feet

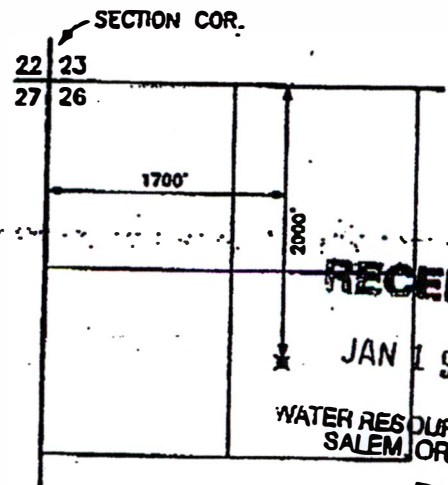
Pump (POD) is located 142 ft east and 1298 ft north of south corner of Section 35.

RECEIVED BY OWRD

JAN 28 2016

SALEM, OR

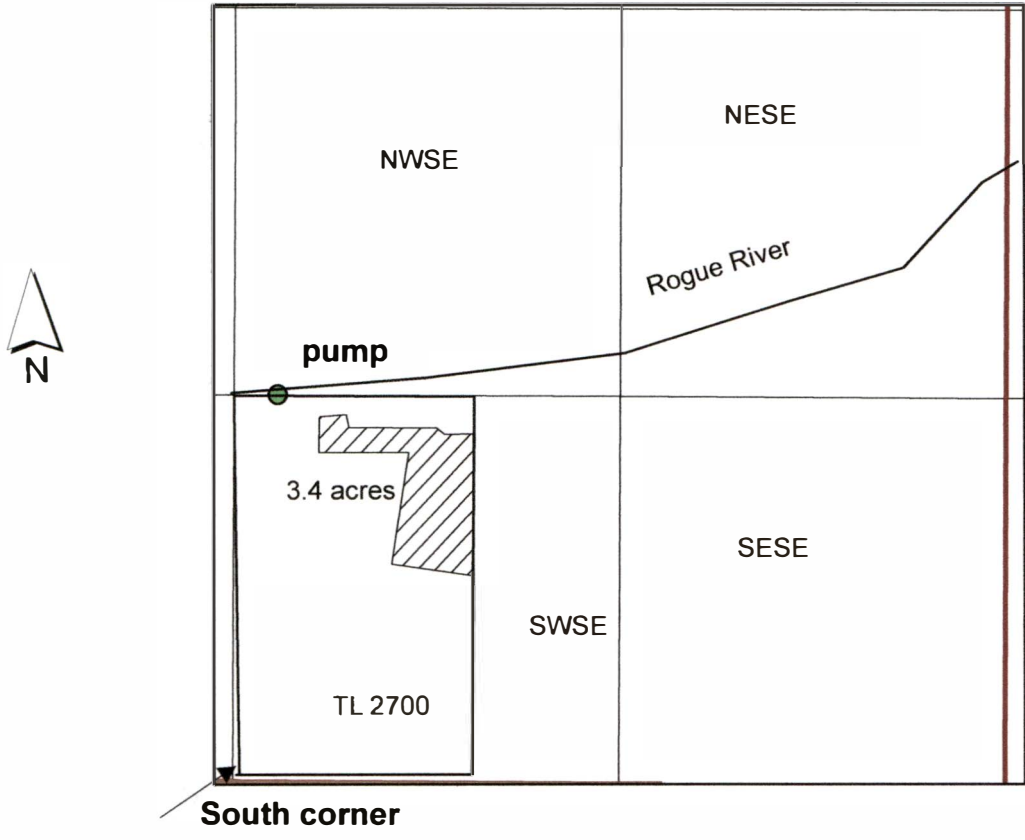
5-88172



LOST CREEK RESERVOIR
POINT OF DIVERSION
T.35S., R.1E., W.4E.
SCALE 1" = 1320'

WATFD

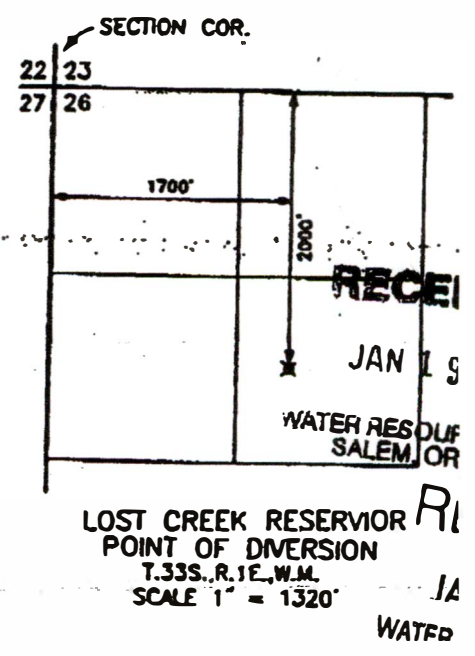
T35S R7W Southeast Quarter Section 35



1 inch = 660 feet

Pump (POD) is located 142 ft east and 1298 ft north of south corner of Section 35.

RECEIVED BY OWRD
 JAN 28 2016
 SALEM, OR



S-88172