

SURVEY NO. 62-7-153

WATER RIGHT SURVEY FOR

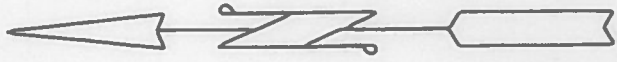
MARLIN SCHAAD

JULY 31, 1962

IN SEC. 23, T. 6 S., R. 3 W.

MARION COUNTY, OREGON

SCALE: 1" = 300'



NW 1/4 OF NE 1/4

NE 1/4 OF NE 1/4

O WELL 990' S & 825' W FROM NE CORNER SEC. 23

3.50 ACRES

1.50 ACRES

10.50 ACRES

11.50 ACRES

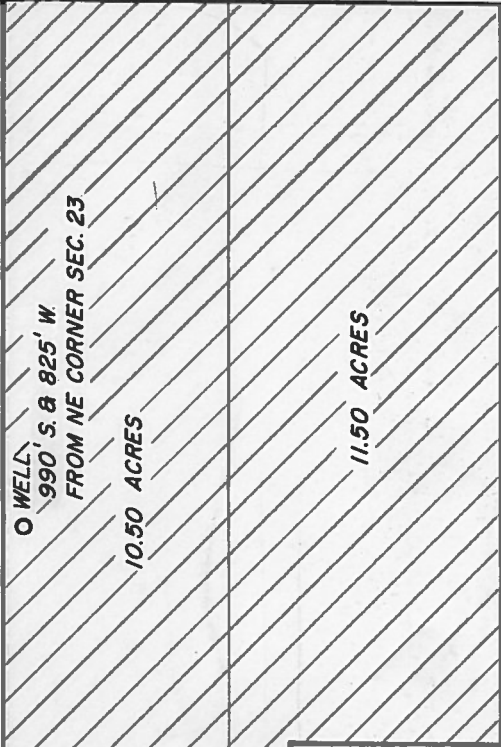
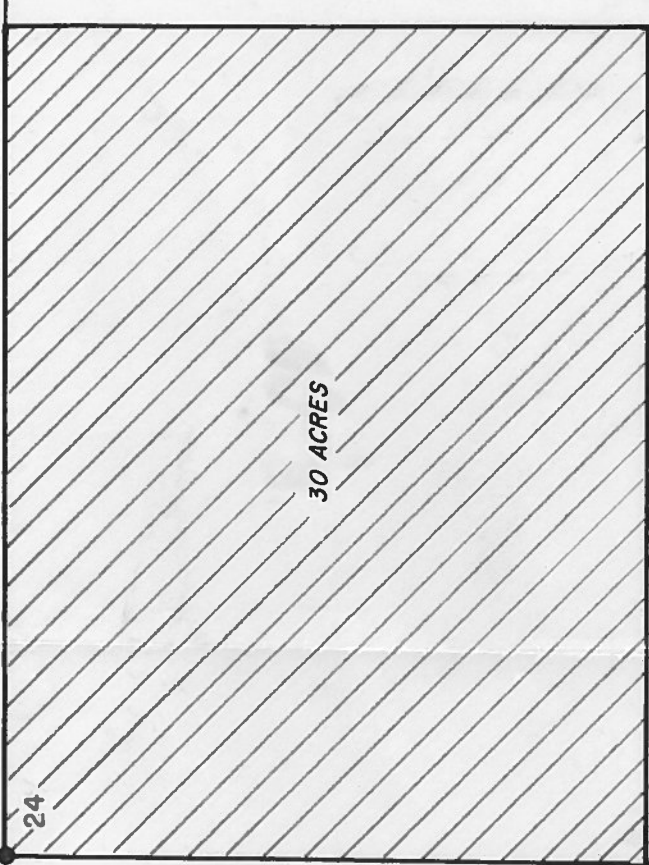
SW 1/4 OF NE 1/4

SE 1/4 OF NE 1/4

30 ACRES

NW 1/4 OF NW 1/4

15 14
23 24



REGISTERED
OREGON
LAND SURVEYOR

Ralph G. Barnes

MAY 5, 1950
RALPH G. BARNES
263

RECEIVED

AUG 19 1962

STATE ENGINEER
SALEM, OREGON

Application No. G-2349

Permit No. G-2224