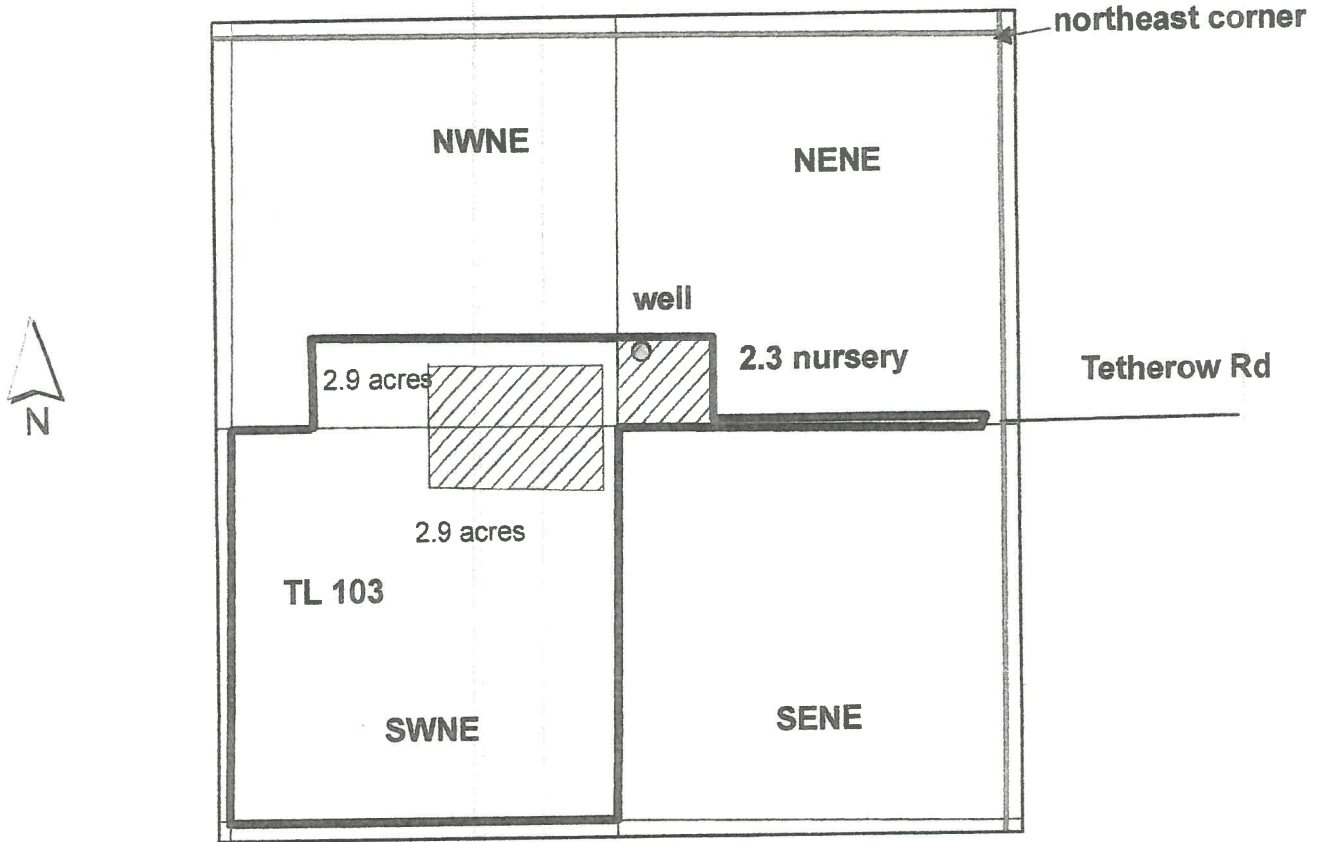


SALEM, OR

FEB 12 2016

RECEIVED BY OWRD

T38S R5W Northeast Section 33

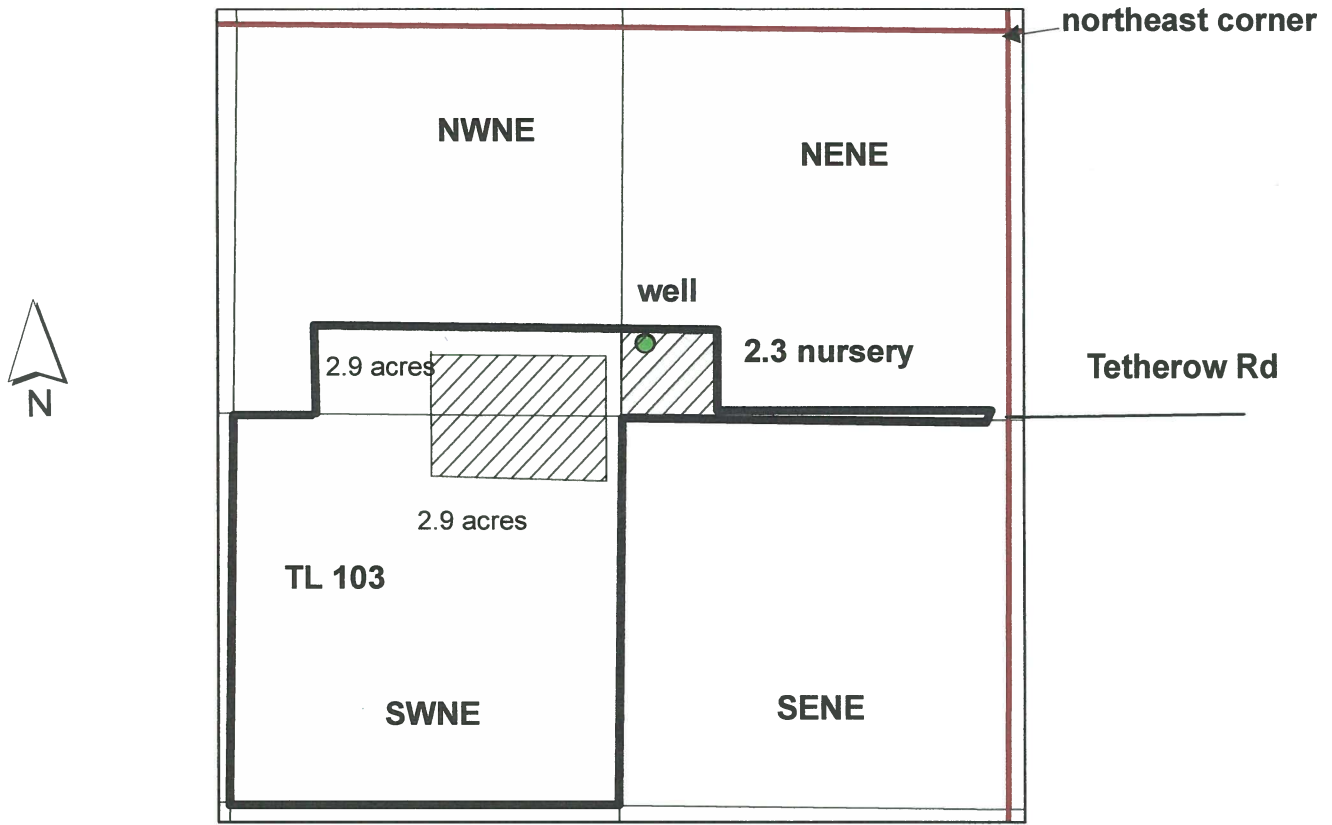


1 inch = 660 feet

The well is located 1077 ft south and 1263 ft west from the northeast corner.

G-18267

T38S R5W Northeast Section 33



1 inch = 660 feet

The well is located 1077 ft south and 1263 ft west from the northeast corner.

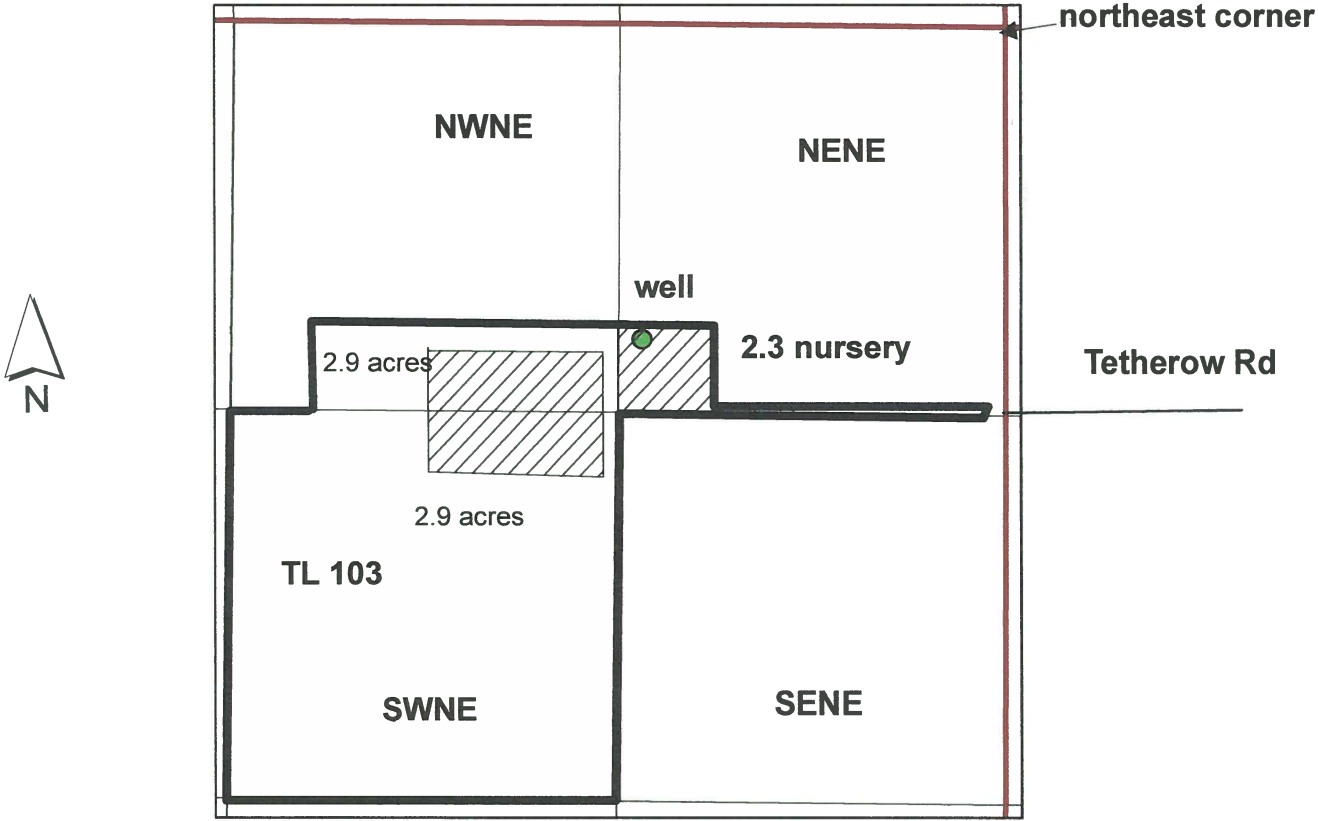
RECEIVED BY OWRD

FEB 12 2016

SALEM, OR

G-18267

T38S R5W Northeast Section 33



1 inch = 660 feet

The well is located 1077 ft south and 1263 ft west from the northeast corner.

RECEIVED BY OWRD

FEB 12 2016

SALEM, OR

G-18267