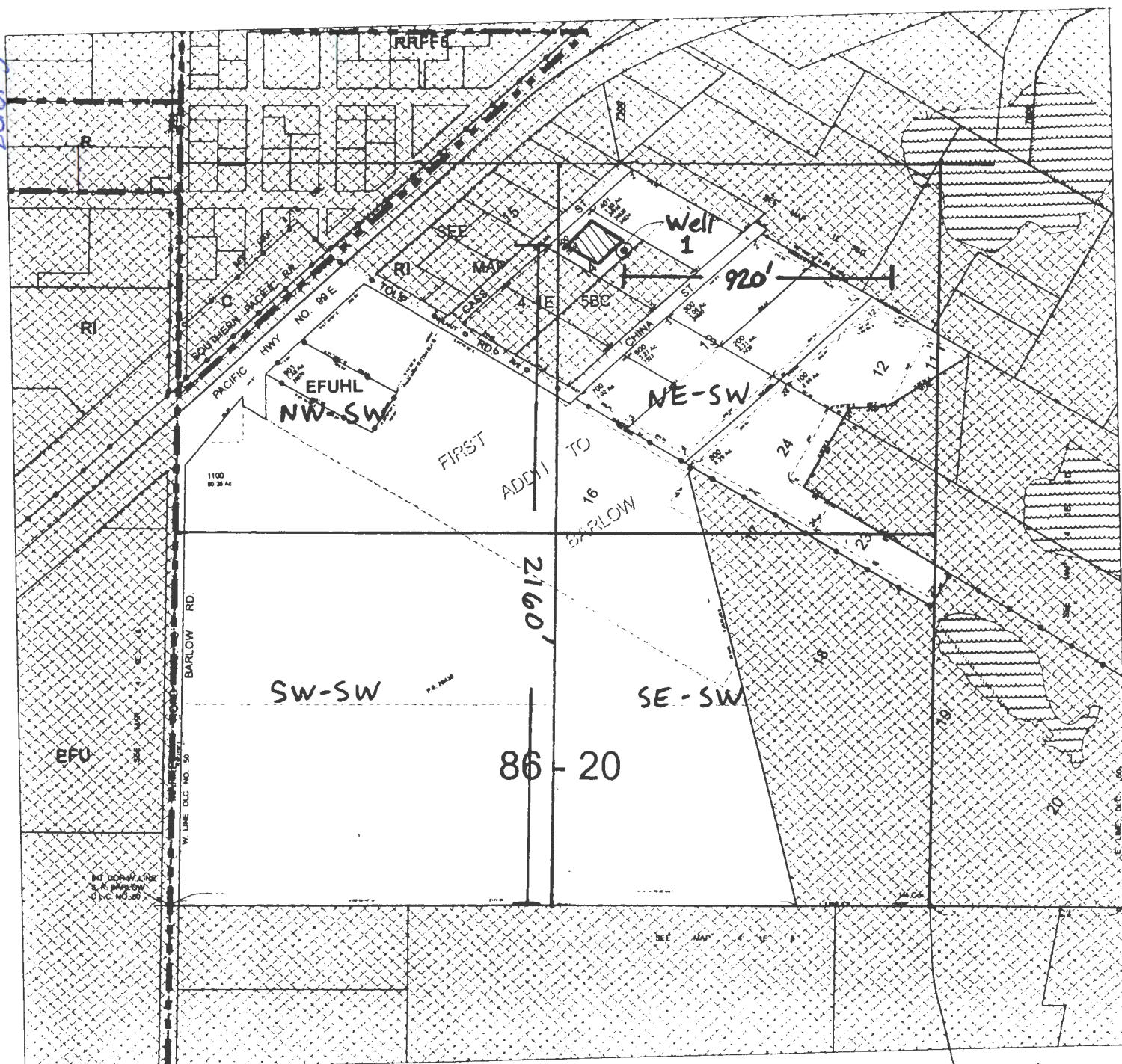



1-18-16



4S/1E-5
 SW 1/4
 1" = 400'

Well is located:
 920' West,
 2160' North
 from S. 1/4 corner
 Section 5

 Area to be irrigated

Skinner Properties,
 LLC



RECEIVED BY OWRD

FEB 22 2016

SALEM, OR

→ S 1/4 corner Sec. 5