

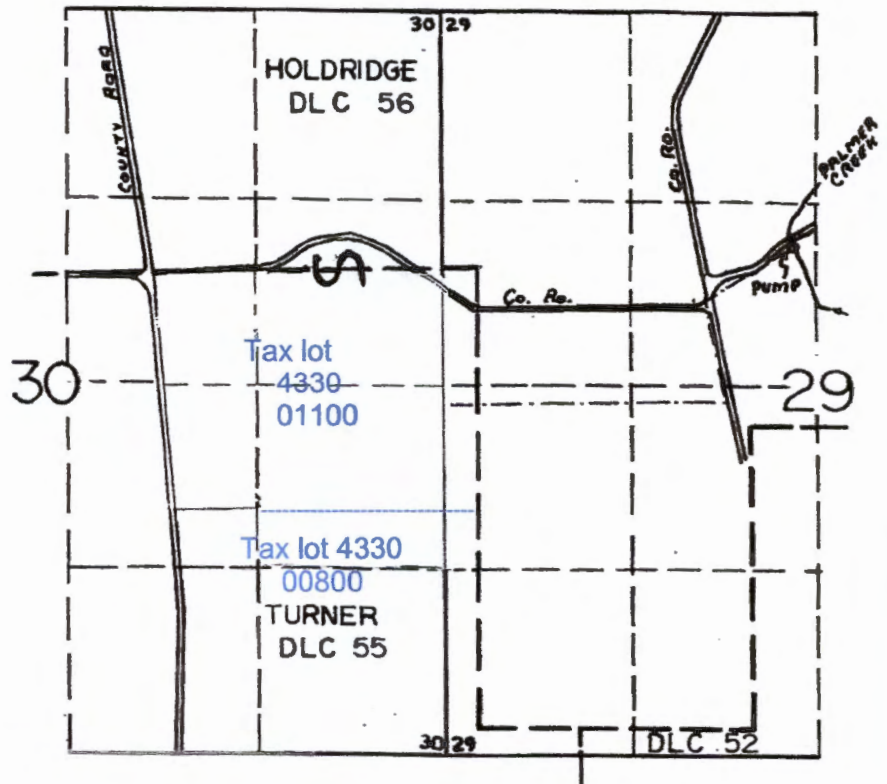
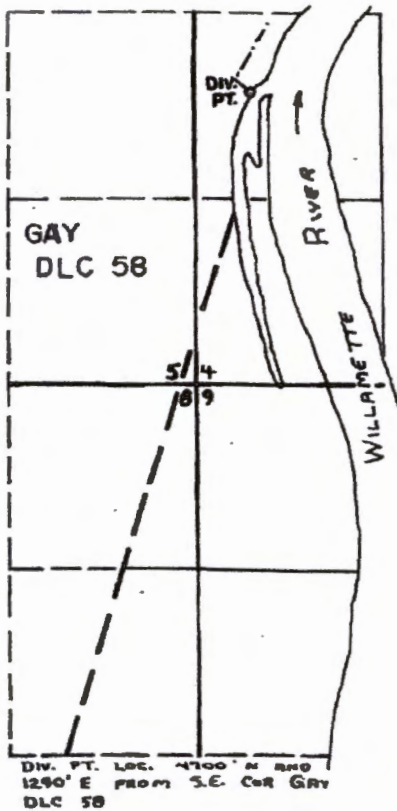
RECEIVED

FEB 29 2016

WATER RESOURCES DEPT
SALEM, OREGON

T.6S., R.3W., W.M.

T.4S., R.3W., W.M.



IN NAME OF
PALMER CREEK WATER DISTRICT
IMPROVEMENT COMPANY

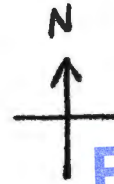
Surveyed JUNE 12 1974, by L. Toll
amended January 19, 2016

DFQ-2LL-12
DFQ-2LL-223

5-88187

S-28187

T4S R3W SECTIONS 29, 30, 31, 32 N.M.



RECEIVED

FEB 29 2016

WATER RESOURCES DEPT
SALEM, OREGON

1" = 528'

 PRIMARY IRRIGATION

THIS MAP WAS PREPARED FOR
THE PURPOSE OF IDENTIFYING A
WATER RIGHT.

TAX LOT
R4890 00900



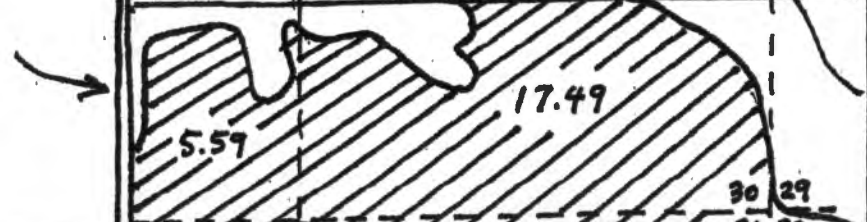
SECTION 29
NWSW



WEST FORK
PALMER
CREEK

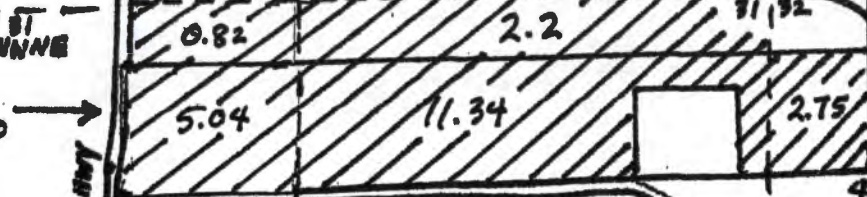
TAX LOT
R4890 00700

SECTION 31
NNNE



SECTION 32 T4S R3W
NNNW

TAX LOT
R4891 00200



LARIETTE HWY

PALMER CREEK RD

487 BC
564821.996
7583678.863
150.58

