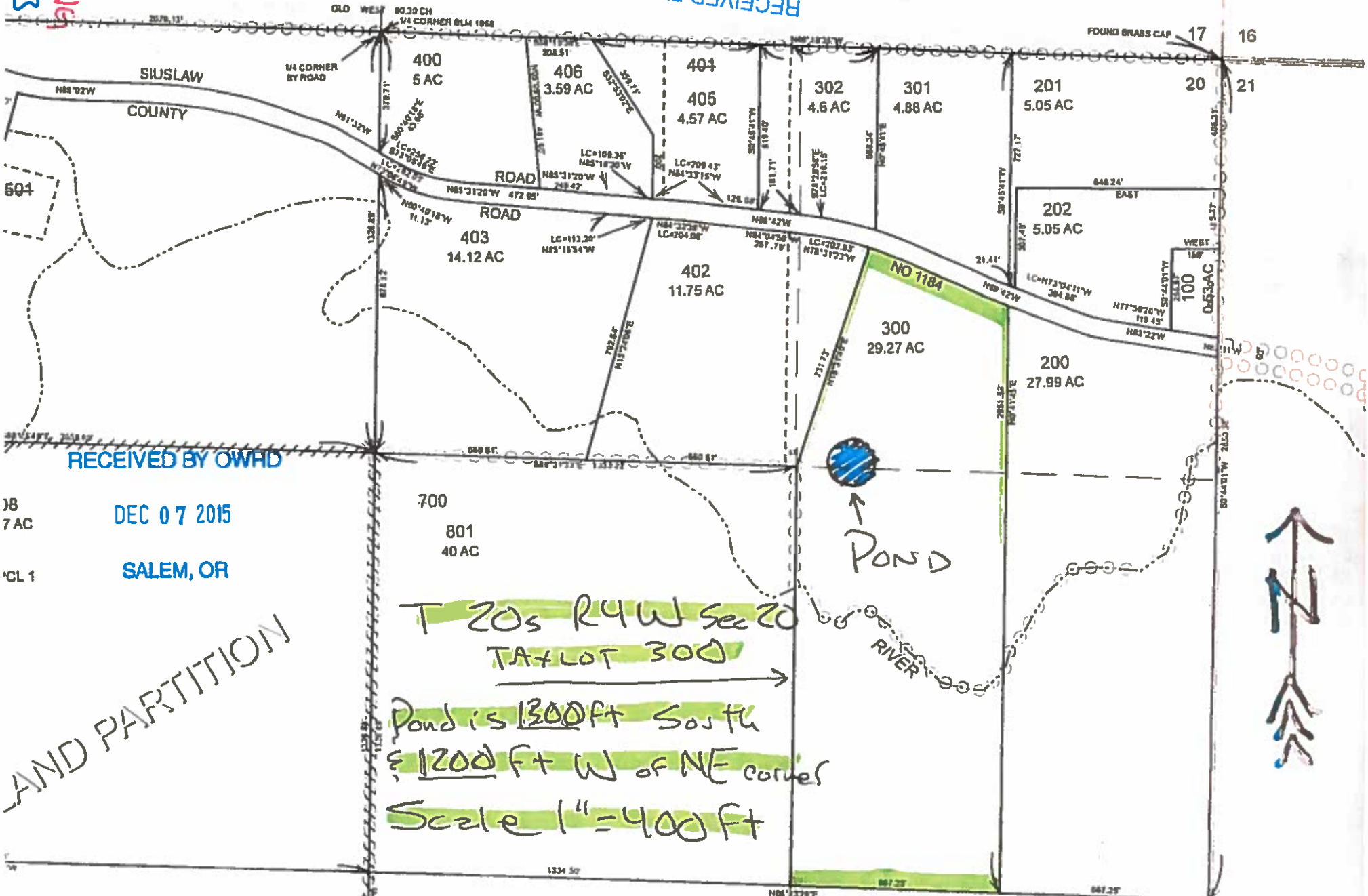


APPROVED
REVISED

SALEM, OR

MAR 14 2016

RECEIVED BY OWRD



RECEIVED BY OWRD

DEC 07 2015

SALEM, OR

AND PARTITION

T 20s R 4 W Sec 20
TA + LOT 300

Pond is 1300 ft South
& 1200 ft W of NE corner

Scale 1" = 400 ft

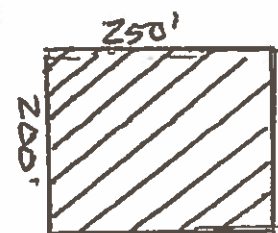
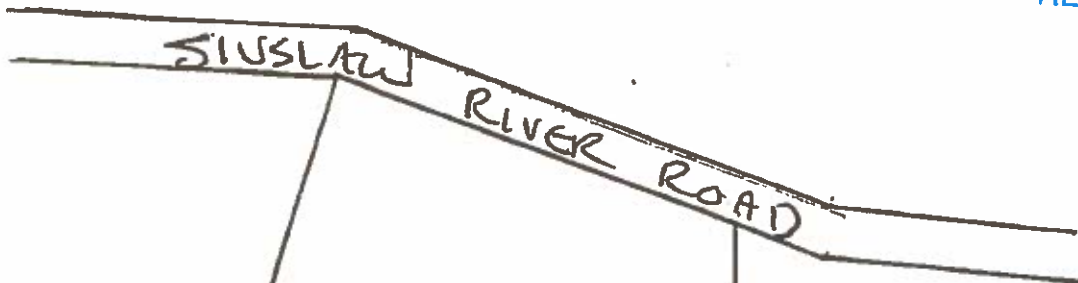
DEC 10

SEE MAP

RECEIVED BY OWRD

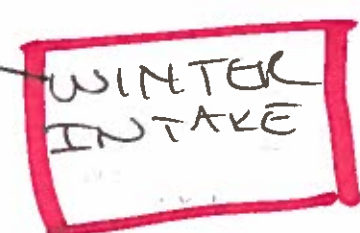
MAR 14 2016

SALEM, OR



28.38 ± AC

E Cor. NW 1/4 = NE 1/4



325'

20 05 20 300

RECEIVED BY OWRD

DEC 07 2015

SALEM, OR

SW Cor. W 1/2 - E 1/2 - NE 1/4

SCALE 1" = 200'

SUPERSEDING R-88153

SE Cor. - W 1/2 - E 1/2 - NE 1/4

667