

2-6188-5

IMPORTANT
This Map for Assessment
and Taxation Purposes
ONLY

**SEC.19 T7S R4W WM
POLK COUNTY**

Scale 1" = 400'

7.4.19

18 17
19 20

See Map 7.4.18

See Map 7.5.24

See Map 7.4.20

See Map 7.4.30

Canceled No.

RECEIVED BY OWRI

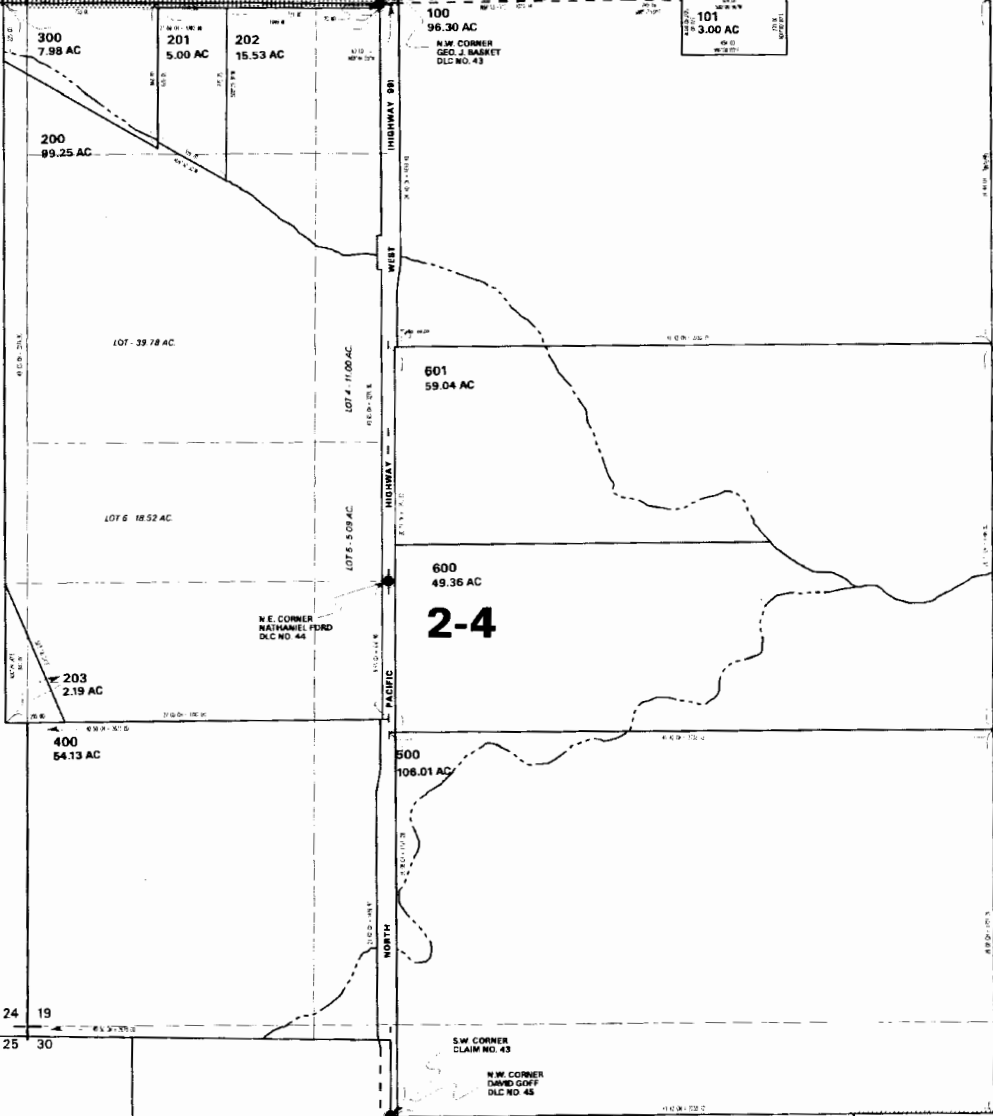
MAR 02 2016

SALEM, OR

19 20
30 29

08/08/15

7.4.19



5-88192

IMPORTANT
This Map for Assessment
and Taxation Purposes
ONLY

**SEC.30 T7S R4W WM
POLK COUNTY**

Scale 1" = 400'

7.4.30

19 20
30 29

24 19

25 30

300
17.25 AC

400
16.61 AC

500
28.64 AC

507
28.72 AC

501
2.54 AC

504
4.45 AC

503
31.35 AC

25 30

36 31

S.W. CORNER
CLAIM NO. 43

N.W. CORNER
DAVID SOFF
DLC NO. 46 See Map 7.4.19

201
58.85 AC

200
22.32 AC

900
75.24 AC

508
1.08 AC

509
1.37 AC

601

600
18.65 AC

S.E. CORNER
NATHANIEL FORD
DLC NO. 44

N.E. CORNER
JAMES KIMSEY
DLC NO. 53

100
151.07 AC
PT (3) PARCEL 2
(UNSURVEYED)

100
151.07 AC
PT (3) PARCEL 2
(UNSURVEYED)

100
151.07 AC
PT (3) PARCEL 2
(UNSURVEYED)

100
151.07 AC
PT (3) PARCEL 2
(UNSURVEYED)

See Map 7.4.31

Cancelled No.

- 101
- 102
- 202
- 203
- 301
- 302
- 401
- 502
- 506
- 901
- 902

2-4

See Map 7.4.25

See Map 7.4.30CA

See Map 7.4.30C

See Map 7.4.29

See Map 7.4.29C

08/08/15

7.4.30

SALEM, OR

MAR 02 2016

RECEIVED BY OWRD

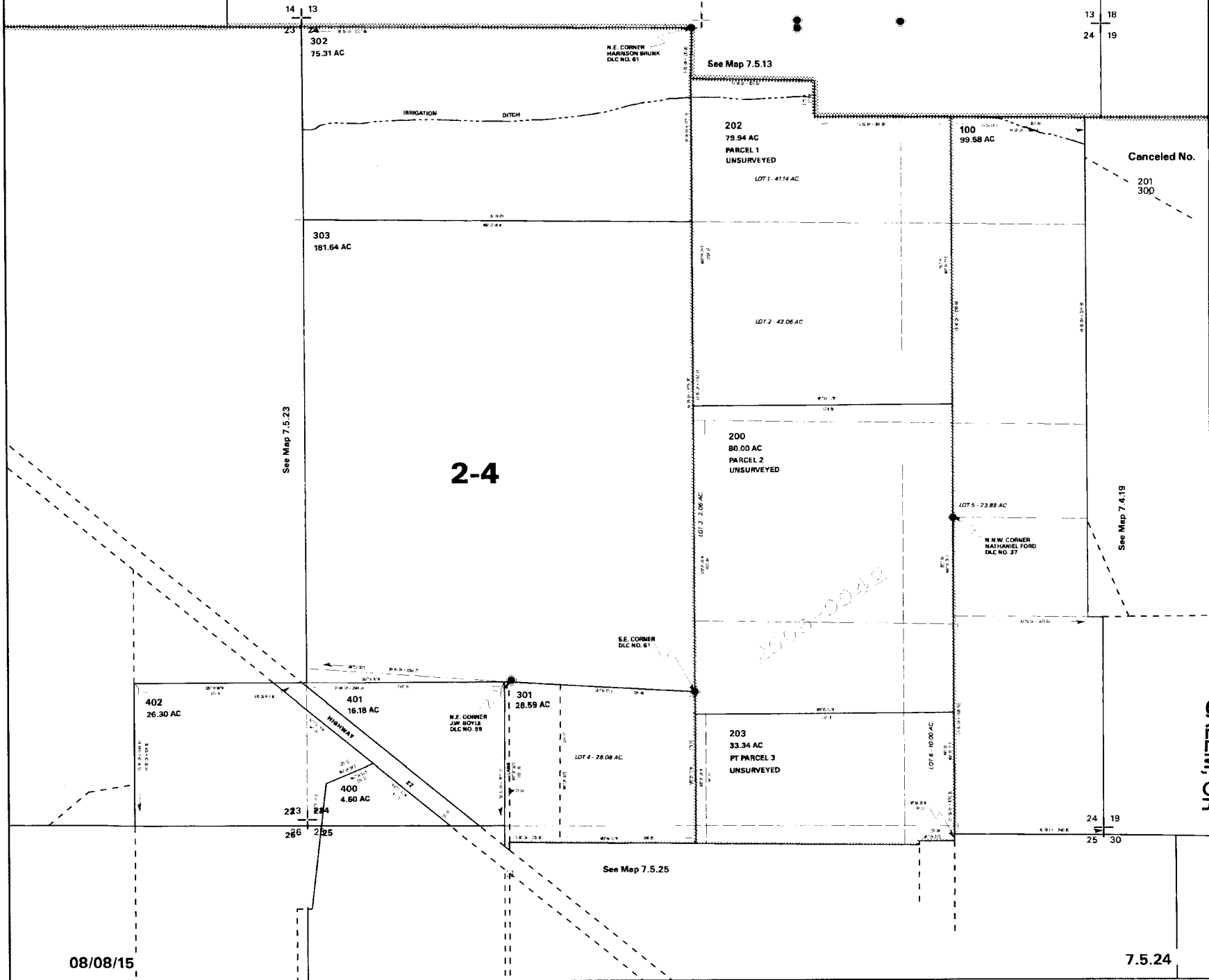
26885

IMPORTANT
This Map for Assessment
and Taxation Purposes
ONLY

SEC.24 T7S R5W WM
POLK COUNTY

Scale 1" = 400'

7.5.24



08/08/15

7.5.24

RECEIVED BY OWRD
MAR 02 2016

76188-5

IMPORTANT
This Map for Assessment
and Taxation Purposes
ONLY

**SEC.25 T7S R5W WM
POLK COUNTY**

Scale 1" = 400'

7.5.25

See Map 7.5.24

See Map 7.5.26

See Map 7.5.30

See Map 7.5.25D

See Map 7.5.25D

See Map 7.5.36

Cancelled No.

- 300 A1
- 301
- 302
- 303
- 390
- 402
- 701
- 702
- 703
- 704
- 801
- 901
- 1000
- 1100
- 1101
- 1200
- 1300
- 1301
- 1401
- 1402
- 1403
- 1404
- 1405
- 1501
- 1502
- 1503
- 1503 A1
- 1503 A2
- 1504
- 1505
- 1506
- 1507
- 1508
- 1509

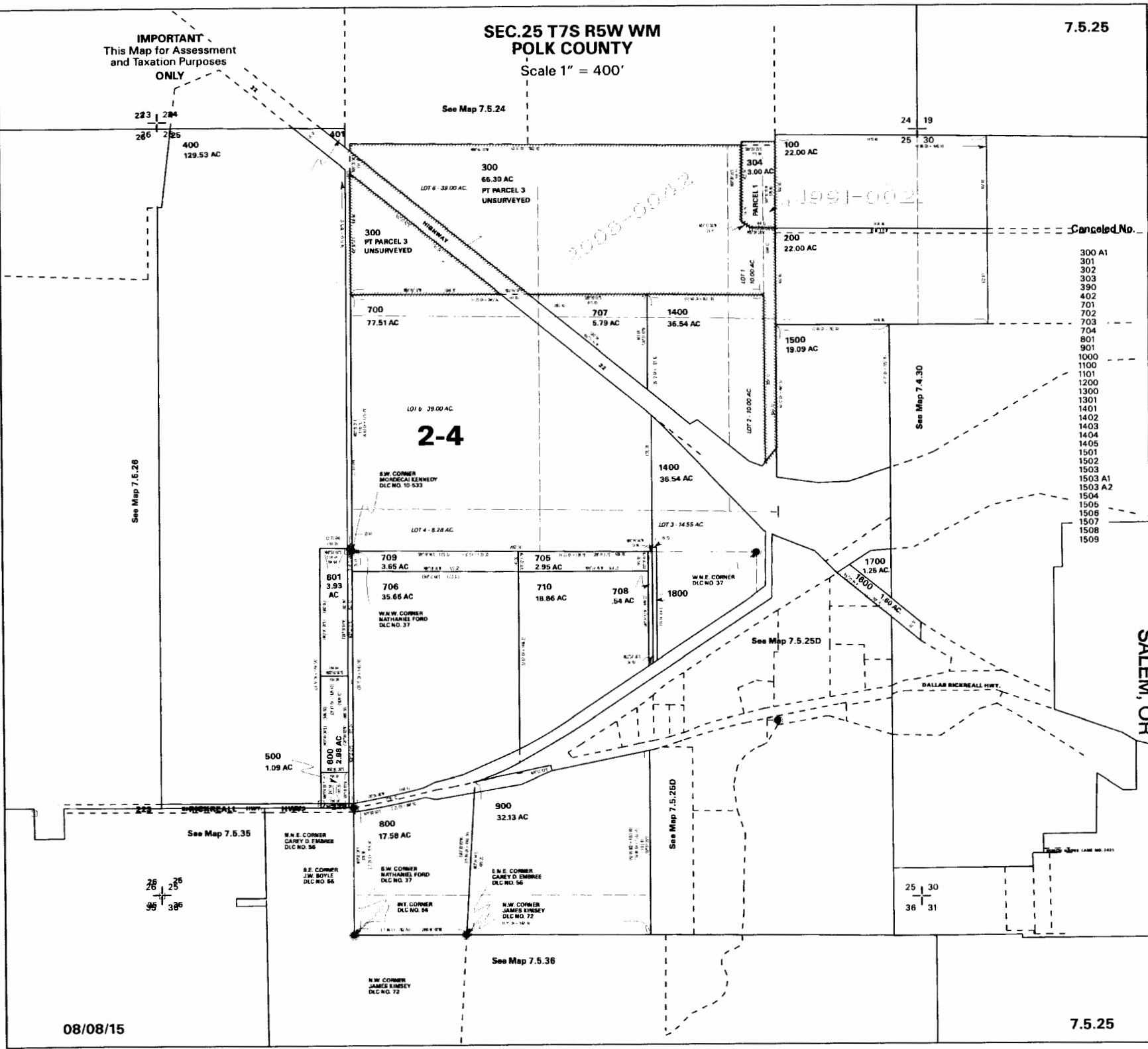
SALEM, OR

MAR 02 2016

RECEIVED BY OWRD

7.5.25

08/08/15



RECEIVED BY OWRD

MAR 02 2016

1" = 1320'

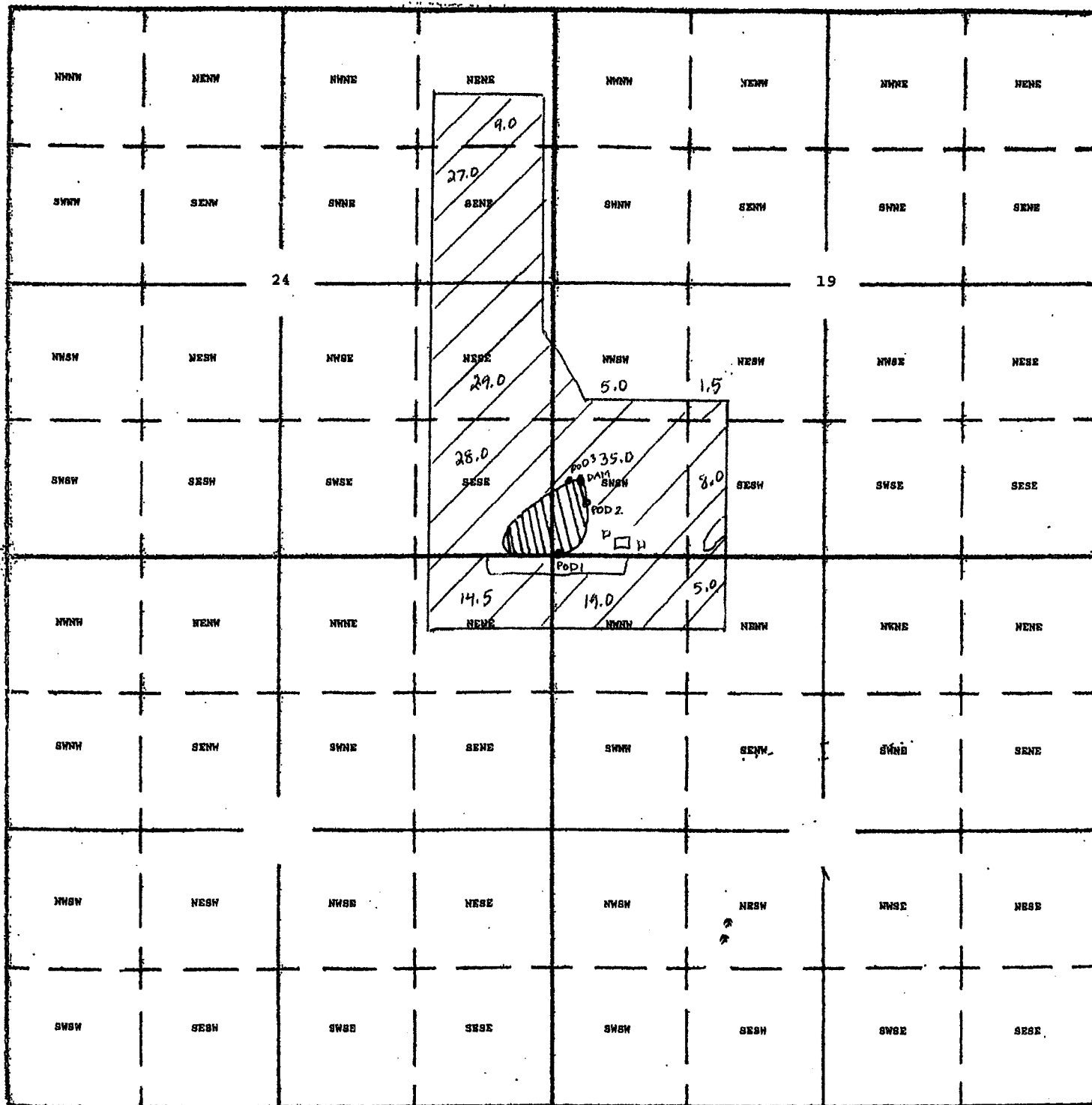
Tax Lot: 100, & 400



SALEM, OR

7 South, 5 West

7 South, 4 West



South

Dam Location: 700' North and 350' East from the SW corner of Section 19

POD 1: 25' North and 25' East from the SW corner of Section 19

POD 2: 500' North and 375' East from the SW corner of Section 19

POD 3: 670' North and 270' East from the SW corner of Section 19

P-88172