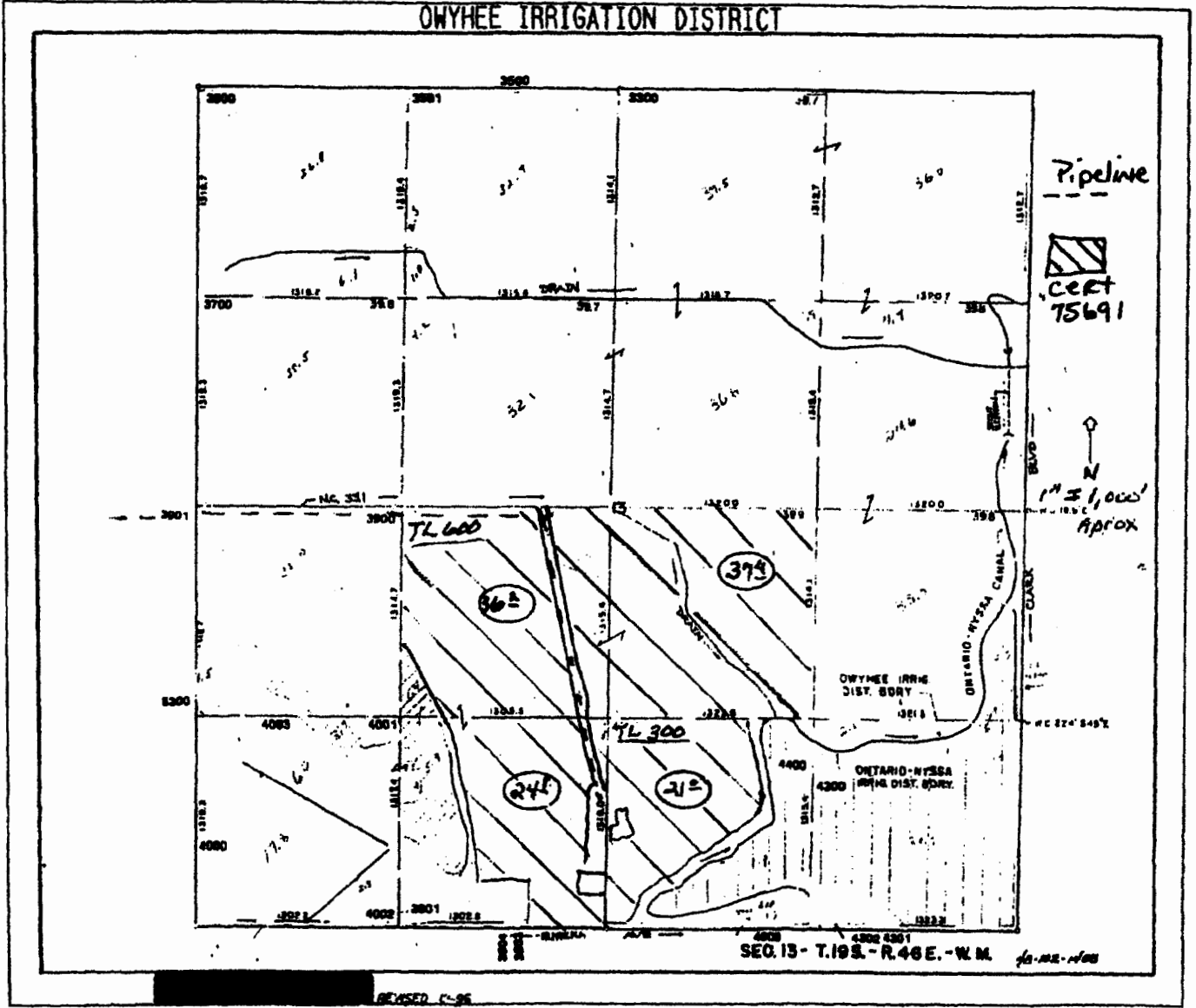


G-10206

OWYHEE IRRIGATION DISTRICT

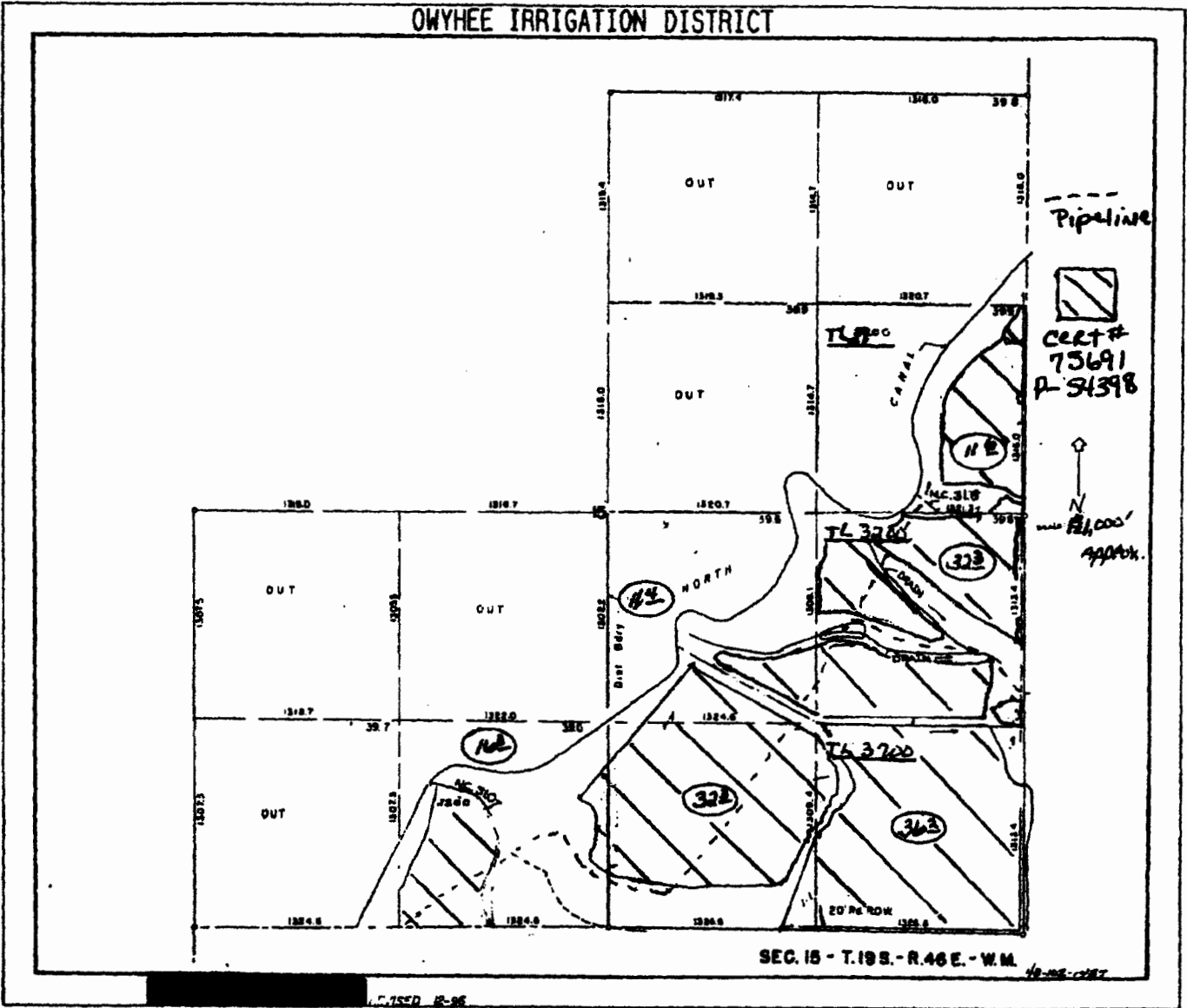


RECEIVED BY OWIRD

JAN 29 2016

SALEM, OR

OWYHEE IRRIGATION DISTRICT



MAR 03 2016

SALEM, OR


RECEIVED BY OWRD

JAN 29 2016

SALEM, OR

6-10206

OWYHEE IRRIGATION DISTRICT

Scott 1 
 well location
 From NW corner
 2600' South
 Then
 3160' East

RECEIVED BY OWRD

MAR 03 2016

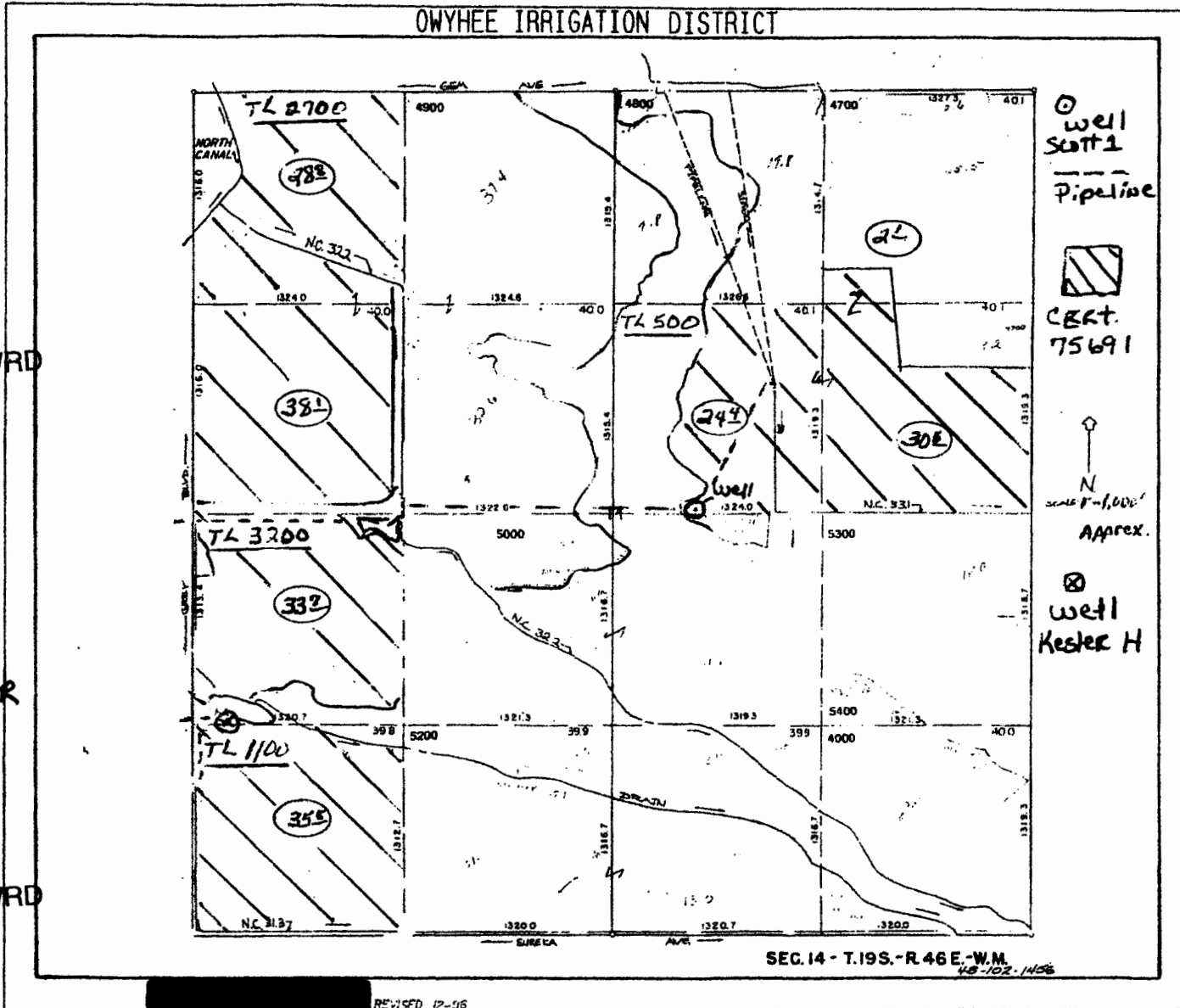
SALEM, OR

Kester H
 well location
 From SW corner
 380' N
 Then
 300' East

RECEIVED BY OWRD

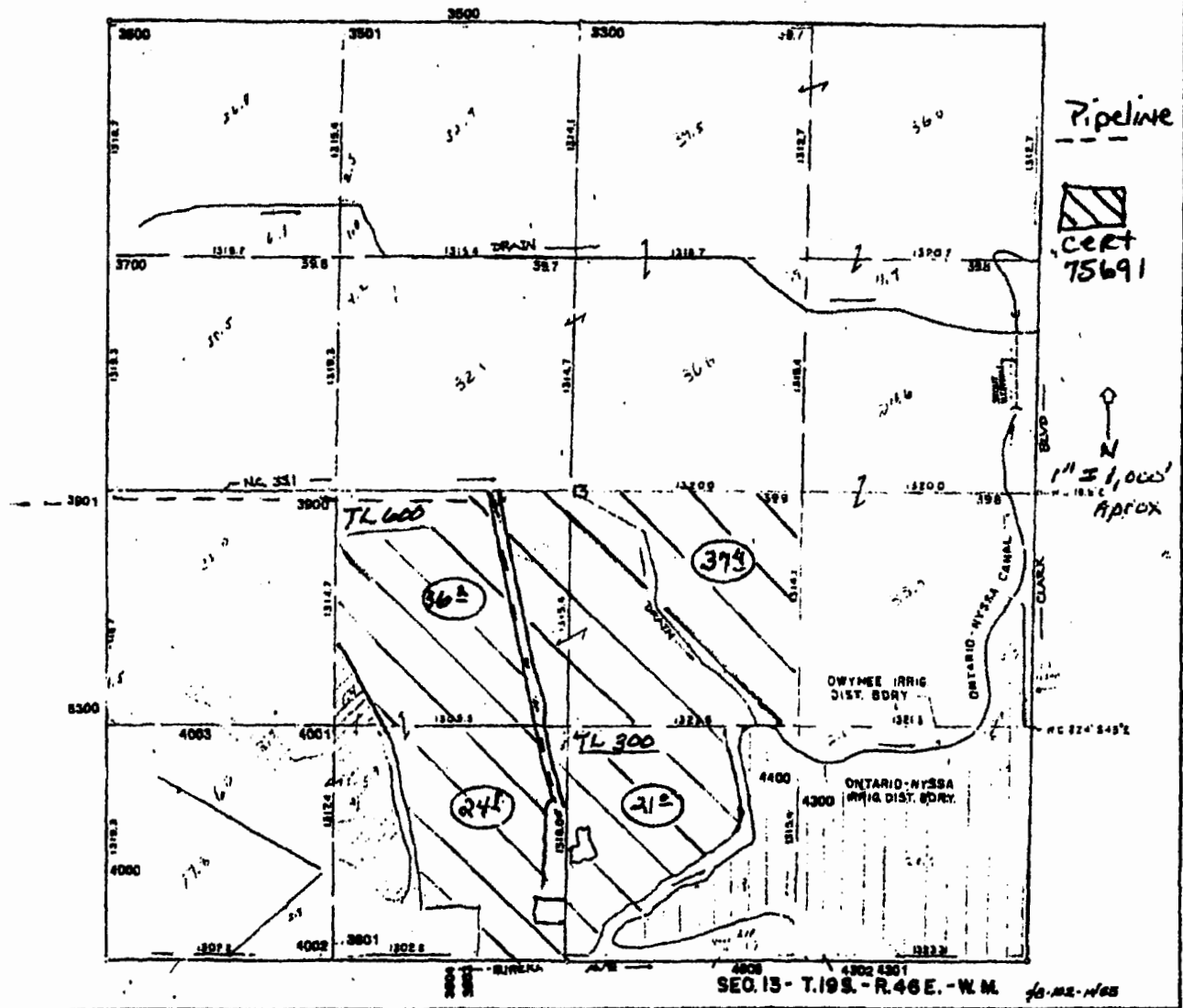
JAN 29 2016

SALEM, OR



6-10-06

OWYHEE IRRIGATION DISTRICT



REVISED 11-95

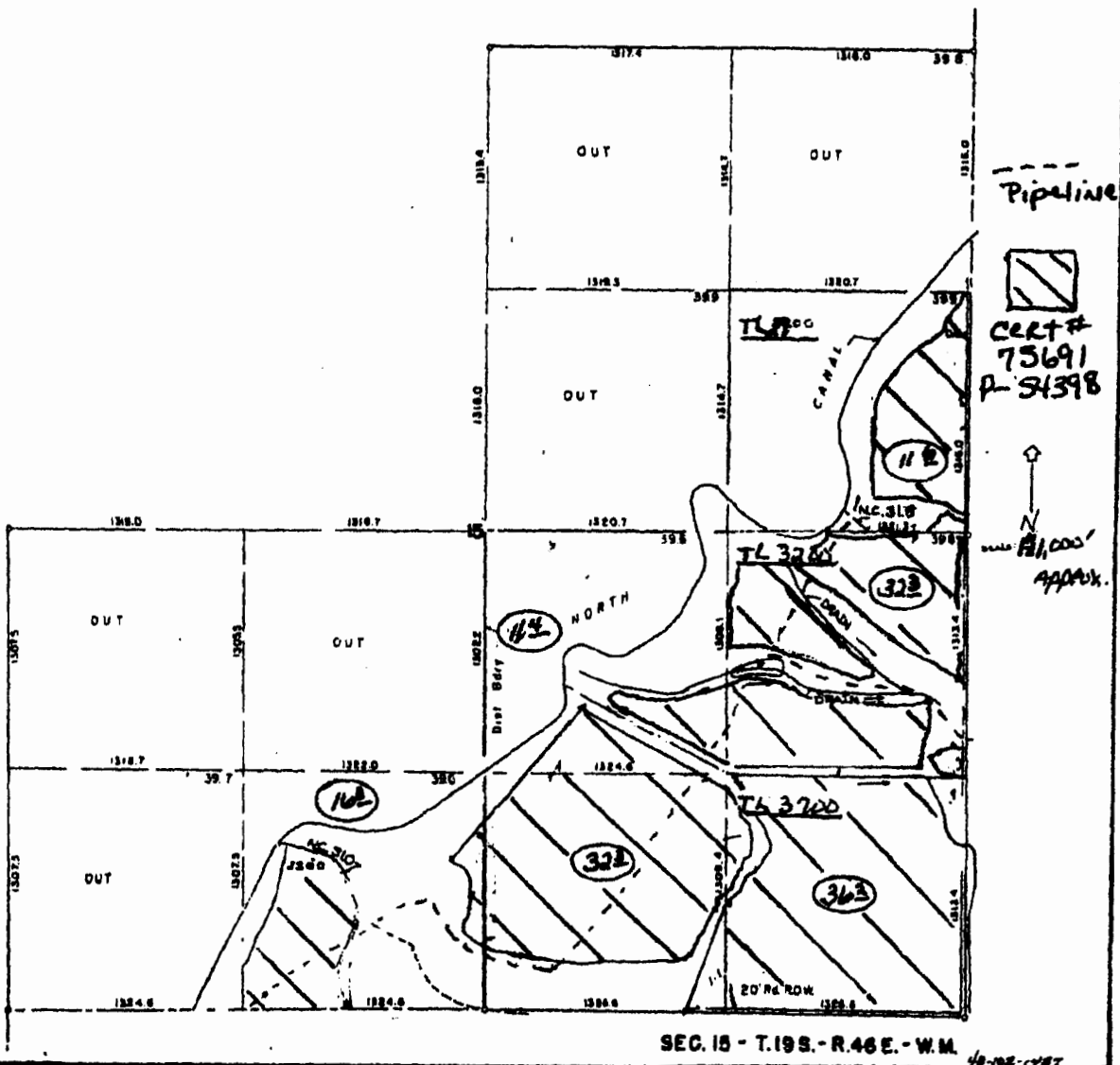
RECEIVED BY

MAR 03 2005

SALEM, OR

G-19206

OWYHEE IRRIGATION DISTRICT



1.755P R-96

RECEIVED BY

MAR 03 2008

SALEM, OR

6-18206

